

NFPA® 286

Standard Methods
of Fire Tests for
Evaluating Contribution of
Wall and Ceiling Interior Finish
to Room Fire Growth

2015 Edition



NFPA®, 1 Batterymarch Park, Quincy, MA 02169-7471, USA
An International Codes and Standards Organization

IMPORTANT NOTICES AND DISCLAIMERS CONCERNING NFPA® STANDARDS

NOTICE AND DISCLAIMER OF LIABILITY CONCERNING THE USE OF NFPA STANDARDS

NFPA® codes, standards, recommended practices, and guides (“NFPA Standards”), of which the document contained herein is one, are developed through a consensus standards development process approved by the American National Standards Institute. This process brings together volunteers representing varied viewpoints and interests to achieve consensus on fire and other safety issues. While the NFPA administers the process and establishes rules to promote fairness in the development of consensus, it does not independently test, evaluate, or verify the accuracy of any information or the soundness of any judgments contained in NFPA Standards.

The NFPA disclaims liability for any personal injury, property or other damages of any nature whatsoever, whether special, indirect, consequential or compensatory, directly or indirectly resulting from the publication, use of, or reliance on NFPA Standards. The NFPA also makes no guaranty or warranty as to the accuracy or completeness of any information published herein.

In issuing and making NFPA Standards available, the NFPA is not undertaking to render professional or other services for or on behalf of any person or entity. Nor is the NFPA undertaking to perform any duty owed by any person or entity to someone else. Anyone using this document should rely on his or her own independent judgment or, as appropriate, seek the advice of a competent professional in determining the exercise of reasonable care in any given circumstances.

The NFPA has no power, nor does it undertake, to police or enforce compliance with the contents of NFPA Standards. Nor does the NFPA list, certify, test, or inspect products, designs, or installations for compliance with this document. Any certification or other statement of compliance with the requirements of this document shall not be attributable to the NFPA and is solely the responsibility of the certifier or maker of the statement.

REMINDER: UPDATING OF NFPA STANDARDS

Users of NFPA codes, standards, recommended practices, and guides (“NFPA Standards”) should be aware that NFPA Standards may be amended from time to time through the issuance of Tentative Interim Amendments or corrected by Errata. An official NFPA Standard at any point in time consists of the current edition of the document together with any Tentative Interim Amendment and any Errata then in effect.

In order to determine whether an NFPA Standard has been amended through the issuance of Tentative Interim Amendments or corrected by Errata, visit the Document Information Pages on NFPA’s website. The Document Information Pages provide up-to-date, document specific information including any issued Tentative Interim Amendments and Errata.

To access the Document Information Page for a specific NFPA Standard, go to <http://www.nfpa.org/docinfo> to choose from the list of NFPA Standards or use the search feature on the right to select the NFPA Standard number (e.g., NFPA 101). In addition to posting all existing Tentative Interim Amendments and Errata, the Document Information Page also includes the option to sign-up for an “Alert” feature to receive an email notification when new updates and other information are posted regarding the document.

IMPORTANT NOTICES AND DISCLAIMERS CONCERNING NFPA® STANDARDS

ADDITIONAL NOTICES AND DISCLAIMERS

Updating of NFPA Standards

Users of NFPA codes, standards, recommended practices, and guides (“NFPA Standards”) should be aware that these documents may be superseded at any time by the issuance of new editions or may be amended from time to time through the issuance of Tentative Interim Amendments or corrected by Errata. An official NFPA Standard at any point in time consists of the current edition of the document together with any Tentative Interim Amendments and any Errata then in effect. In order to determine whether a given document is the current edition and whether it has been amended through the issuance of Tentative Interim Amendments or corrected through the issuance of Errata, consult appropriate NFPA publications such as the National Fire Codes® Subscription Service, visit the NFPA website at www.nfpa.org, or contact the NFPA at the address listed below.

Interpretations of NFPA Standards

A statement, written or oral, that is not processed in accordance with Section 6 of the Regulations Governing the Development of NFPA Standards shall not be considered the official position of NFPA or any of its Committees and shall not be considered to be, nor be relied upon as, a Formal Interpretation.

Patents

The NFPA does not take any position with respect to the validity of any patent rights referenced in, related to, or asserted in connection with an NFPA Standard. The users of NFPA Standards bear the sole responsibility for determining the validity of any such patent rights, as well as the risk of infringement of such rights, and the NFPA disclaims liability for the infringement of any patent resulting from the use of or reliance on NFPA Standards.

NFPA adheres to the policy of the American National Standards Institute (ANSI) regarding the inclusion of patents in American National Standards (“the ANSI Patent Policy”), and hereby gives the following notice pursuant to that policy:

NOTICE: The user’s attention is called to the possibility that compliance with an NFPA Standard may require use of an invention covered by patent rights. NFPA takes no position as to the validity of any such patent rights or as to whether such patent rights constitute or include essential patent claims under the ANSI Patent Policy. If, in connection with the ANSI Patent Policy, a patent holder has filed a statement of willingness to grant licenses under these rights on reasonable and nondiscriminatory terms and conditions to applicants desiring to obtain such a license, copies of such filed statements can be obtained, on request, from NFPA. For further information, contact the NFPA at the address listed below.

Law and Regulations

Users of NFPA Standards should consult applicable federal, state, and local laws and regulations. NFPA does not, by the publication of its codes, standards, recommended practices, and guides, intend to urge action that is not in compliance with applicable laws, and these documents may not be construed as doing so.

Copyrights

NFPA Standards are copyrighted. They are made available for a wide variety of both public and private uses. These include both use, by reference, in laws and regulations, and use in private self-regulation, standardization, and the promotion of safe practices and methods. By making these documents available for use and adoption by public authorities and private users, the NFPA does not waive any rights in copyright to these documents.

Use of NFPA Standards for regulatory purposes should be accomplished through adoption by reference. The term “adoption by reference” means the citing of title, edition, and publishing information only. Any deletions, additions, and changes desired by the adopting authority should be noted separately in the adopting instrument. In order to assist NFPA in following the uses made of its documents, adopting authorities are requested to notify the NFPA (Attention: Secretary, Standards Council) in writing of such use. For technical assistance and questions concerning adoption of NFPA Standards, contact NFPA at the address below.

For Further Information

All questions or other communications relating to NFPA Standards and all requests for information on NFPA procedures governing its codes and standards development process, including information on the procedures for requesting Formal Interpretations, for proposing Tentative Interim Amendments, and for proposing revisions to NFPA standards during regular revision cycles, should be sent to NFPA headquarters, addressed to the attention of the Secretary, Standards Council, NFPA, 1 Batterymarch Park, P.O. Box 9101, Quincy, MA 02269-9101; email: stds_admin@nfpa.org

For more information about NFPA, visit the NFPA website at www.nfpa.org. All NFPA codes and standards can be viewed at no cost at www.nfpa.org/freeaccess.

Copyright © 2014 National Fire Protection Association®. All Rights Reserved.

NFPA® 286

Standard Methods of

Fire Tests for Evaluating Contribution of Wall and Ceiling Interior Finish to Room Fire Growth

2015 Edition

This edition of NFPA 286, *Standard Methods of Fire Tests for Evaluating Contribution of Wall and Ceiling Interior Finish to Room Fire Growth*, was prepared by the Technical Committee on Fire Tests. It was issued by the Standards Council on November 11, 2014, with an effective date of December 1, 2014, and supersedes all previous editions.

This edition of NFPA 286 was approved as an American National Standard on December 1, 2014.

Origin and Development of NFPA 286

The 2000 edition was the first edition of this standard. This document was developed in response to activities associated with the regulation of interior finishes in NFPA 101, *Life Safety Code*. The Fire Safety Technical Committee on Furnishings and Contents had proposed modifications to NFPA 265, *Standard Methods of Fire Tests for Evaluating Room Fire Growth Contribution of Textile Wall Coverings*, for the 1997 edition of NFPA 101. These modifications would have established a test protocol that was not appropriate to the scope of NFPA 265. NFPA 286 addresses those concerns associated with interior finishes that do not remain in place during testing to NFPA 265 test protocols.

The 2006 edition included a complete editorial rewrite for compliance with the *Manual of Style for NFPA Technical Committee Documents*. Further organizational and editorial changes were made to improve the application of the test method, particularly with regard to the test procedure. The purpose of the document was revised to clarify the document's intent. Technical changes addressed recording and documentation of the fire test.

The 2011 edition expanded the scope of the document to include provisions for all wall and ceiling interior finish. A new annex section addressing acceptance criteria was added.

The 2015 edition includes a new section on laminated products and revised test procedures to be consistent with NFPA 285.

Technical Committee on Fire Tests

Barry L. Badders, Jr., *Chair*
Southwest Research Institute, TX [RT]

Scott W. Adams, Park City Fire Service District, UT [E]
Rep. International Fire Marshals Association
Farid Alfawakhiri, American Iron and Steel Institute,
IL [M]
Jesse J. Beitel, Hughes Associates, Inc., MD [SE]
James A. Burns, New York State Department, NY [E]
Rep. Firemen's Association of the State of New York
Gordon H. Damant, Inter-City Testing & Consulting
Corp. of California, CA [SE]
Scott E. Dillon, Crane Engineering, IL [SE]
William E. Fitch, Phyrefish.com, FL [SE]
Marcelo M. Hirschler, GBH International, CA [SE]
Paul A. Hough, Armstrong World Industries, Inc., PA [M]
Mohammed M. Khan, FM Global, MA [I]

William E. Koffel, Koffel Associates, Inc., MD [SE]
Richard T. Long, Jr., Exponent, Inc., MD [M]
Rep. Upholstered Furniture Action Council
Michael E. Luna, Intertek Testing Services, TX [RT]
Andre W. Marshall, University of Maryland, MD [SE]
Rodney A. McPhee, Canadian Wood Council,
Canada [M]
Kathleen A. Newman, Firetect, CA [M]
David T. Sheppard, U.S. Bureau of Alcohol, Tobacco,
Firearms & Explosives, MD [RT]
Dwayne E. Sloan, UL LLC, NC [RT]
Kuma Sumathipala, American Wood Council, DC [M]
Robert A. Wessel, Gypsum Association, MD [M]

Alternates

Erik H. Anderson, Koffel Associates, Inc., MD [SE]
(Alt. to W. E. Koffel)
Richard J. Davis, FM Global, MA [I]
(Alt. to M. M. Khan)
Timothy Earl, GBH International, MI [SE]
(Alt. to M. M. Hirschler)
Sam W. Francis, American Wood Council, PA [M]
(Alt. to K. Sumathipala)
Stephen P. Fuss, U.S. Bureau of Alcohol, Tobacco,
Firearms & Explosives, MD [RT]
(Alt. to D. T. Sheppard)
Marc L. Janssens, Southwest Research Institute, TX [RT]
(Alt. to B. L. Badders, Jr.)

Arthur J. Parker, Hughes Associates, Inc., MD [SE]
(Alt. to J. J. Beitel)
Stanislav I. Stoliarov, University of Maryland, MD [SE]
(Alt. to A. W. Marshall)
Ineke Van Zeeland, Canadian Wood Council,
Canada [M]
(Alt. to R. A. McPhee)
Robert J. Wills, American Iron and Steel Institute,
AL [M]
(Alt. to F. Alfawakhiri)
Joe Ziolkowski, American Furniture Manufacturers
Association, NC [M]
(Alt. to R. T. Long, Jr.)

Nonvoting

Robert H. Barker, American Fiber Manufacturers
Association, VA [M]
Rep. American Fiber Manufacturers Association

Rohit Khanna, US Consumer Product Safety
Commission, MD [C]

Tracy L. Vecchiarelli, NFPA Staff Liaison

This list represents the membership at the time the Committee was balloted on the final text of this edition. Since that time, changes in the membership may have occurred. A key to classifications is found at the back of the document.

NOTE: Membership on a committee shall not in and of itself constitute an endorsement of the Association or any document developed by the committee on which the member serves.

Committee Scope: This Committee shall have primary responsibility for documents on fire testing procedures, for reviewing existing fire test standards and recommending appropriate action to NFPA, for recommending the application of and advising on the interpretation of acceptable test standards for fire problems of concern to NFPA technical committees and members, and for acting in a liaison capacity between NFPA and the committees of other organizations writing fire test standards. This Committee does not cover fire tests that are used to evaluate extinguishing agents, devices, or systems.

Contents

Chapter 1 Administration	286- 4	Chapter 6 Environmental Conditions	286-10
1.1 Scope	286- 4	6.1 Fire Test Room Environment	286-10
1.2 Purpose	286- 4	Chapter 7 Instrumentation	286-10
1.3 Application	286- 4	7.1 Fire Test Room Instrumentation	286-10
Chapter 2 Referenced Publications	286- 5	7.2 Canopy Hood and Exhaust Duct	286-11
2.1 General	286- 5	7.3 Instrumentation in Exhaust Duct	286-12
2.2 NFPA Publications (Reserved)	286- 5	Chapter 8 Calibration	286-15
2.3 Other Publications	286- 5	8.1 Calibration and Documentation of Ignition Source and Test Equipment	286-15
2.4 References for Extracts in Mandatory Sections	286- 5	8.2 Calibration Procedure	286-16
Chapter 3 Definitions	286- 5	8.3 Smoke Measurement Calibration	286-16
3.1 General	286- 5	8.4 Gas Analyzers Calibration	286-16
3.2 NFPA Official Definitions	286- 5	Chapter 9 Test Procedure	286-16
3.3 General Definitions	286- 5	9.1 Procedure	286-16
Chapter 4 Test Equipment	286- 5	Chapter 10 Calculation Methods	286-16
4.1 Ignition Source	286- 5	10.1 Mass Flow Rate	286-16
4.2 Geometry and Construction of the Fire Test Room	286- 6	10.2 Smoke Measurement Equations	286-17
Chapter 5 Specimen Mounting	286- 6	10.3 Release Rate of Combustion Gases	286-17
5.1 Specimen Mounting	286- 6	10.4 Symbols	286-17
5.2 Materials Using Substrates	286- 7	Chapter 11 Report	286-18
5.3 Backing Materials	286- 7	11.1 Report	286-18
5.4 Acoustical Materials and Other Board Materials	286- 8	11.2 Report of Significant Events	286-18
5.5 Batt- or Blanket-Type Insulating and Other Flexible Materials	286- 8	11.3 Report of Single Point Key Properties	286-18
5.6 Building Units	286- 8	11.4 Discussion of Performance	286-18
5.7 Site-Fabricated Stretch Systems	286- 8	Annex A Explanatory Material	286-19
5.8 Wall or Ceiling Covering Materials	286- 9	Annex B Method of Determining Suitability of Oxygen Analyzers for Making Heat Release Measurements	286-21
5.9 Laminated Products with Wood Substrates	286- 9	Annex C Acceptance Criteria	286-21
5.10 Ceiling Lining Materials	286- 9	Annex D Informational References	286-22
5.11 Specimen Installation	286- 9	Index	286-23
5.12 Conditioning	286-10		

NFPA 286

Standard Methods of

Fire Tests for Evaluating Contribution
of Wall and Ceiling Interior Finish
to Room Fire Growth

2015 Edition

IMPORTANT NOTE: This NFPA document is made available for use subject to important notices and legal disclaimers. These notices and disclaimers appear in all publications containing this document and may be found under the heading "Important Notices and Disclaimers Concerning NFPA Standards." They can also be obtained on request from NFPA or viewed at www.nfpa.org/disclaimers.

NOTICE: An asterisk (*) following the number or letter designating a paragraph indicates that explanatory material on the paragraph can be found in Annex A.

A reference in brackets [] following a section or paragraph indicates material that has been extracted from another NFPA document. As an aid to the user, the complete title and edition of the source documents for extracts in mandatory sections of the document are given in Chapter 2 and those for extracts in informational sections are given in Annex D. Extracted text may be edited for consistency and style and may include the revision of internal paragraph references and other references as appropriate. Requests for interpretations or revisions of extracted text shall be sent to the technical committee responsible for the source document.

Information on referenced publications can be found in Chapter 2 and Annex D.

Chapter 1 Administration

1.1* Scope. This standard describes a method for determining the contribution of interior finish materials to room fire growth during specified fire exposure conditions.

1.1.1 This method is intended for the evaluation of the flammability characteristics of wall and ceiling interior finish, where such materials constitute the exposed interior surfaces of buildings.

1.1.2 This fire test method is not intended for the evaluation of fire resistance of assemblies, nor is it intended for the evaluation of the effect of fires that originate within a wall assembly.

1.1.3 This standard specifies three types of specimen mounting, depending on the application of the interior finish material, as follows:

- (1) Three walls (for interior finish to be used on walls only)
- (2) Three walls and the ceiling (for interior finish to be used on walls and ceilings)
- (3) The ceiling alone (for interior finish to be used on ceilings only)

1.2 Purpose.

1.2.1 This method of test measures certain fire performance characteristics of interior finish materials in an enclosure under specified fire exposure conditions.

1.2.2 This method of test determines the potential extent to which the interior finish materials contribute to fire growth in a room, including the heat and smoke released, the combustion products released, and the potential for fire spread beyond the room, under the particular conditions simulated.

1.2.3 The method of test provides the following:

- (1) Extent of fire growth in the fire test room
- (2) Rate of heat release by the specimen
- (3) Total heat released by the specimen
- (4) Time to flashover in the fire test room if flashover occurs
- (5) Time to flame extension beyond the doorway of the fire test room if flame extension occurs
- (6) Total heat flux incident to the floor of the fire test room
- (7) Upper level gas temperature in the fire test room
- (8) Smoke obscuration, as determined in the exhaust duct
- (9) Production of carbon monoxide, as determined in the exhaust duct
- (10) Emissions of other combustion gases, as determined in the exhaust duct

1.2.4 This method does not provide data that can be generalized to apply to rooms or spaces of different shapes, sizes, and ventilation.

1.2.5 The performance observed in the test is based on the test conditions.

1.2.6 If a test specimen is exposed to a different environment, as in an actual fire, the performance of the specimen can be different.

1.2.7 The method of test does not provide the following:

- (1) Full information concerning toxicity of combustion gases
- (2) Fire resistance of wall-ceiling systems

1.3 Application.

1.3.1 The specimen is tested by using the ignition source described in 1.3.10.

1.3.2 Ceiling finish materials are tested mounted on the ceiling only.

1.3.3 For materials intended for use only as interior wall finish, the specimen is mounted on three walls of the fire test room.

1.3.4 For materials intended for use as interior wall and ceiling finish, the specimen is mounted on three walls and on the ceiling of the fire test room.

1.3.5 These methods use a gas burner to produce a diffusion flame to expose the walls in the corner of a fire test room 2.44 m × 3.66 m × 2.44 m (8 ft × 12 ft × 8 ft).

1.3.6 The burner produces a prescribed rate of heat output, as described in 1.3.10.

1.3.7 The contribution of the interior finish material to fire growth is measured by constant monitoring of the following:

- (1) Incident heat flux on the center of the floor
- (2) Temperature of the gases in the upper part of the fire test room
- (3) Rate of heat release
- (4) Smoke release
- (5) Time to flashover



1.3.8 The test is conducted with natural ventilation to the fire test room provided through a single doorway that is 0.78 m × 2.02 m (30.75 in. × 79.50 in.).

1.3.9 The combustion products are collected in a hood that feeds into a plenum connected to an exhaust duct in which measurements of the gas velocity, temperature, smoke obscuration, and concentrations of selected gases are made.

1.3.10* The ignition source is a gas burner that is capable of supplying a net rate of heat output of 40 kW for 5 minutes followed by 160 kW for 10 minutes, for a total exposure period of 15 minutes.

1.3.11 Flashover is considered to have occurred when any two of the conditions indicated in 9.1(10) have been attained.

Chapter 2 Referenced Publications

2.1 General. The documents or portions thereof listed in this chapter are referenced within this standard and shall be considered part of the requirements of this document.

2.2 NFPA Publications. (Reserved)

2.3 Other Publications.

2.3.1 ASTM Publications. ASTM International, 100 Barr Harbor Drive, West Conshohocken, PA 19428-2959.

ASTM C1186, *Standard Specification for Flat Fiber-Cement Sheets*, 2008 (2012).

ASTM C1396/C 1396 M, *Specification for Gypsum Board*, 2013.

ASTM E136, *Standard Test Method for Behavior of Materials in a Vertical Tube Furnace at 750°C*, 2012.

2.3.2 CSA Publications. Canadian Standards Association, 5060 Spectrum Way, Mississauga, ON, L4W 5N6, Canada.

CSA Standard O121, *Douglas Fir Plywood*, 2009 (R2013).

2.3.3 NIST Publications. National Institute of Standards and Technology, 100 Bureau Drive, Gaithersburg, MD 20899-1070.

NIST Voluntary Product Standard PS 1, *Structural Plywood*, 2009.

2.3.4 Other Publications.

Merriam-Webster's Collegiate Dictionary, 11th edition, Merriam-Webster, Inc., Springfield, MA, 2003.

2.4 References for Extracts in Mandatory Sections.

NFPA 101®, *Life Safety Code*®, 2015 edition.

NFPA 265, *Standard Methods of Fire Tests for Evaluating Room Fire Growth Contribution of Textile or Expanded Vinyl Wall Coverings on Full Height Panels and Walls*, 2015 edition.

Chapter 3 Definitions

3.1 General. The definitions contained in this chapter shall apply to the terms used in this standard. Where terms are not defined in this chapter or within another chapter, they shall be defined using their ordinarily accepted meanings within the context in which they are used. *Merriam-Webster's Collegiate Dictionary*, 11th edition, shall be the source for the ordinarily accepted meaning.

3.2 NFPA Official Definitions.

3.2.1 Shall. Indicates a mandatory requirement.

3.2.2 Should. Indicates a recommendation or that which is advised but not required.

3.2.3 Standard. An NFPA Standard, the main text of which contains only mandatory provisions using the word “shall” to indicate requirements and that is in a form generally suitable for mandatory reference by another standard or code or for adoption into law. Nonmandatory provisions are not to be considered a part of the requirements of a standard and shall be located in an appendix, annex, footnote, informational note, or other means as permitted in the NFPA Manuals of Style. When used in a generic sense, such as in the phrase “standards development process” or “standards development activities,” the term “standards” includes all NFPA Standards, including Codes, Standards, Recommended Practices, and Guides.

3.3 General Definitions.

3.3.1 Average Upper Gas Layer Temperature. Temperature based on the average of the four ceiling quadrant thermocouples and the center of the room ceiling thermocouple. [265, 2015]

3.3.2 Site-Fabricated Stretch System. A system, fabricated on-site, and intended for acoustical, tackable, or aesthetic purposes, that is comprised of three elements: (1) a frame (constructed of plastic, wood, metal, or other material) used to hold fabric in place, (2) a core material (infill, with the correct properties for the application), and (3) an outside layer, comprised of a textile, fabric, or vinyl, that is stretched taut and held in place by tension or mechanical fasteners via the frame. [101, 2015]

3.3.3* Textile. A fabric made of natural or man-made fibers.

Chapter 4 Test Equipment

4.1 Ignition Source.

4.1.1* The ignition source for the test shall be a gas burner with a nominal 305 mm × 305 mm (12 in. × 12 in.) porous top surface, as shown in Figure 4.1.1.

4.1.1.1 The material specified in 4.1.1 shall be a minimum 102 mm (4 in.) layer of white Ottawa sand used to provide the horizontal surface through which the gas is supplied.

4.1.1.2 A burner using a layer of sand as specified in 4.1.1.1 shall be used for test specimens with a potential for dripping.

4.1.2 The top surface of the burner through which the gas is applied shall be located horizontally 300 mm ±50 mm (12 in. ±2 in.) above the floor.

4.1.2.1 The burner enclosure shall be in contact with both walls in a corner of the fire test room, opposite from the door.

4.1.3 The gas supply to the burner shall be of C.P. grade propane (99 percent purity).

4.1.3.1 Flow rates of gas shall be calculated using a net heat of combustion of propane of 85 MJ/m³ (2280 Btu/ft³) at standard conditions of 101 kPa pressure (absolute pressure of 14.7 psi) and 20°C (68°F) temperature.

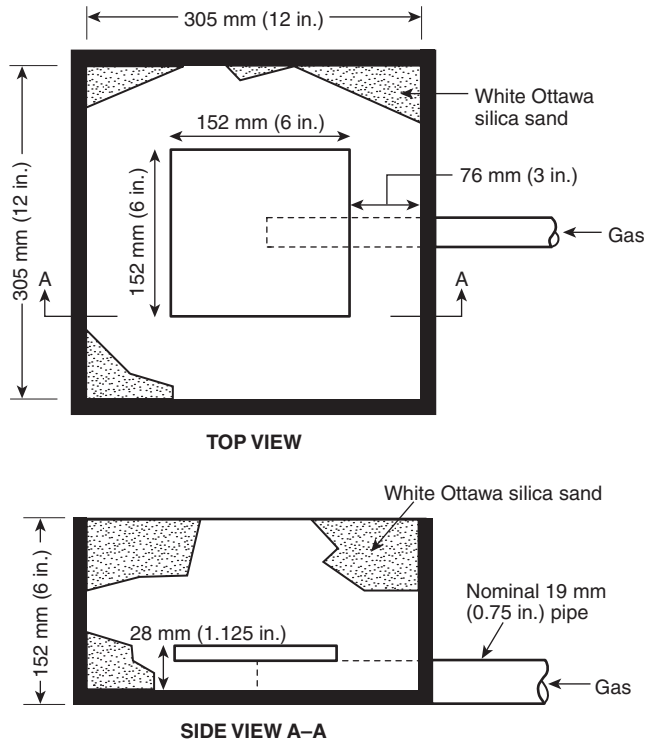


FIGURE 4.1.1 Gas Burner.

4.1.3.2 The gas flow rate shall be metered throughout the test, with an accuracy of at least ± 3 percent.

4.1.3.3 The heat output to the burner shall be controlled within ± 5 percent of the prescribed value.

4.1.4* The gas supply to the burner shall produce a net heat output of $40 \text{ kW} \pm 1 \text{ kW}$ for the first 5 minutes, followed by a net heat output of $160 \text{ kW} \pm 5 \text{ kW}$ for the next 10 minutes.

4.1.5 The burner design shall allow switching from the first fixed net heat output of 40 kW to the second fixed net heat output of 160 kW within 10 seconds.

4.1.6 Burner controls shall be provided for automatic shutoff of the gas supply if flameout occurs.

4.1.7 The burner shall be ignited by a pilot burner or a remotely controlled spark igniter.

4.2 Geometry and Construction of the Fire Test Room.

4.2.1* The interior dimensions of the floor of the fire test room, when the specimens are in place, shall be as shown in Figure 4.2.1 and shall measure $2.44 \text{ m} \pm 0.05 \text{ m} \times 3.66 \text{ m} \pm 0.05 \text{ m}$ ($8 \text{ ft} \pm 2 \text{ in.} \times 12 \text{ ft} \pm 2 \text{ in.}$).

4.2.1.1 The finished ceiling shall be $2.44 \text{ m} \pm 0.05 \text{ m}$ ($8 \text{ ft} \pm 2 \text{ in.}$) above the floor.

4.2.1.2 There shall be four walls at right angles defining the fire test room as shown in Figure 4.2.1.

4.2.2* The fire test room shall be placed indoors in a draft-free, heated space that is large enough to ensure that the surroundings do not influence the test fire.

4.2.3 There shall be a $0.78 \text{ m} \pm 0.02 \text{ m} \times 2.02 \text{ m} \pm 0.02 \text{ m}$ ($30.75 \text{ in.} \pm 0.75 \text{ in.} \times 79.5 \text{ in.} \pm 0.75 \text{ in.}$) doorway in the center of

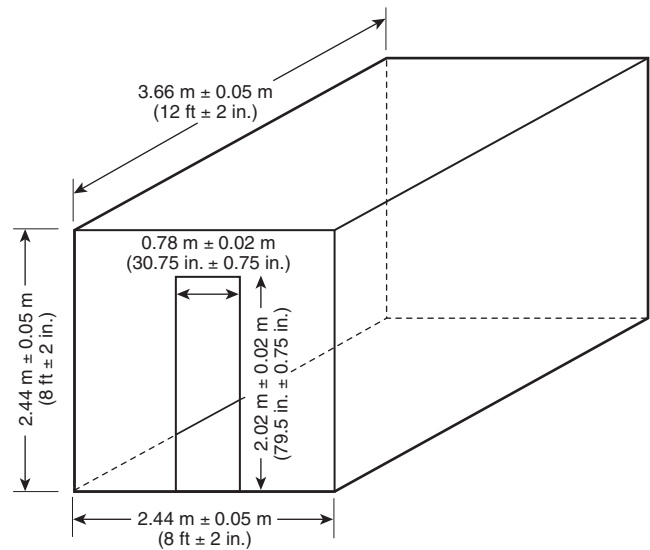


FIGURE 4.2.1 Interior Fire Test Room Dimensions and Interior Doorway Dimensions.

one of the $2.44 \text{ m} \times 2.44 \text{ m}$ ($8 \text{ ft} \times 8 \text{ ft}$) walls, and there shall be no other wall, floor, or ceiling openings that allow ventilation.

4.2.4* The fire test room shall meet the following criteria:

- (1) The room shall be a framed (with wood or metal studs) or concrete block structure.
- (2) The inside surface of the walls, ceiling, and floor shall be of calcium silicate board of 500 kg/m^3 to 800 kg/m^3 (31 lb/ft^3 to 50 lb/ft^3) density and shall be a minimum of 12 mm (0.5 in.) in nominal thickness or shall be of fire-rated (Type X) gypsum wallboard that is at least 12 mm (0.5 in.) in nominal thickness.

4.2.5 The door frame shall be constructed such that it remains unchanged during the test period to a tolerance of ± 1 percent in height and width.

Chapter 5 Specimen Mounting

5.1 Specimen Mounting.

5.1.1* Test specimens shall be mounted on a framing or support system that is comparable to that intended for their actual field use, using substrates, backing materials, insulation, or air gaps as appropriate to the intended application, and representing a typical value of thermal resistance for the wall system.

5.1.2 If a manufacturer specifies the use of an adhesive, then specimens shall be mounted using the adhesive and the application rate specified by the manufacturer and shall be comparable to actual field installations.

5.1.3* Mounting methods shall be grouped according to materials to be tested, which are categorized either by their usage or by the form of the material.

5.1.3.1 The mountings shall be described for test method uniformity and for good laboratory practice.

5.1.3.2 The mountings shall not imply restriction in the specific details of field installation.

5.1.3.3 The mountings shall be used for general material testing for which the specific details of the field installation either have not been established or are so broad that any single installation method is not representative of the full range of installation possibilities.

5.1.4 Where an interior finish material exhibits a distinct direction, the wall portion of the test sample shall be mounted so that the distinct direction is vertical, unless the manufacturer indicates that a different method of mounting will be used in actual installations, except as indicated in 5.1.5.

5.1.5 Where a panel system has been designed to be mounted as a wall interior finish material so that the distinct direction can be vertical or horizontal, it shall be tested in both orientations and the results shall be reported separately for each orientation.

5.1.6 If the product to be tested is in panel form, the standard dimensions (width, length, and thickness) of the panels shall be used.

5.1.7 If panels are tested in other than panel form, the rationale for the change shall be stated in the report.

5.1.8 A detailed description of the mounting method used shall be given in the test report.

5.1.9 If a special mounting technique is used in order to improve the physical behavior of the specimen during the test, it shall be clearly stated in the report.

5.2 Materials Using Substrates.

5.2.1 Thin surface materials, thermoplastic products that melt, paints, and varnishes shall be applied, depending on their end use, to one of the substrates identified in 5.2.1.2 through 5.2.1.4.

5.2.1.1 When mounted on substrates described in 5.2.1.2 and 5.2.1.3, materials that use studs for support in an actual installation shall not be required to incorporate studs and the associated airspace in the test specimen.

5.2.1.2 The following substrates shall be acceptable:

- (1) Noncombustible fiber-reinforced silicate board with a dry density of $680 \text{ kg/m}^3 \pm 50 \text{ kg/m}^3$ ($42 \text{ lb/ft}^3 \pm 3 \text{ lb/ft}^3$), at a thickness of 9 mm to 13 mm ($\frac{3}{8} \text{ in. to } \frac{1}{2} \text{ in.}$)
- (2) Noncombustible board with a dry density of $1650 \text{ kg/m}^3 \pm 150 \text{ kg/m}^3$ ($103 \text{ lb/ft}^3 \pm 9 \text{ lb/ft}^3$), at a thickness of 9 mm to 13 mm ($\frac{3}{8} \text{ in. to } \frac{1}{2} \text{ in.}$)
- (3) Ordinary particleboard with a density of $680 \text{ kg/m}^3 \pm 50 \text{ kg/m}^3$ ($42 \text{ lb/ft}^3 \pm 3 \text{ lb/ft}^3$) at normal conditioning atmosphere of 50 ± 5 percent relative humidity and $23^\circ\text{C} \pm 2^\circ\text{C}$ ($73^\circ\text{F} \pm 4^\circ\text{F}$) temperature, at a thickness of 9 mm to 13 mm ($\frac{3}{8} \text{ in. to } \frac{1}{2} \text{ in.}$)
- (4)*Gypsum wallboard, complying with ASTM C1396/C1396M, *Specification for Gypsum Board*, at a thickness of 12.7 mm to 15.9 mm ($\frac{1}{2} \text{ in. to } \frac{5}{8} \text{ in.}$)

5.2.1.3* Other substrates shall be acceptable if the end use of the product requires them.

5.2.1.4 The use of alternative substrates as permitted by 5.2.1.3 shall be justified in the report.

5.2.2 Paints and varnishes shall be applied to the substrate with the application rate specified by the sponsor.

5.2.3 Coating materials, such as cementitious mixtures, mastic coatings, sprayed fibers, or similar materials, shall be mixed and applied to the substrate board as specified in the manufacturer's instructions at the thickness, coverage rate, or density recommended by the manufacturer.

5.2.4 Coating intended for application to a wood surface shall be applied to a substrate as specified in 5.2.1.2(2).

5.2.5 Coating materials intended for application to specific combustible surfaces other than wood shall meet the following criteria:

- (1) They shall be applied to the specific surface for which they are intended.
- (2) The coating material and combustible material shall be attached to the substrate board as specified in 5.2.1.

5.2.6 Coating materials intended for application only to non-combustible surfaces shall be applied to a substrate as specified in 5.2.1.2(1) or 5.2.1.2(2).

5.3 Backing Materials.

5.3.1 Whenever calcium silicate board or gypsum wallboard is specified as a backing substrate in this standard, the material shall be as described in 5.2.1.

5.3.2 All backing materials, when used, shall be supported on a framed support system as shown in Figure 5.3.2.

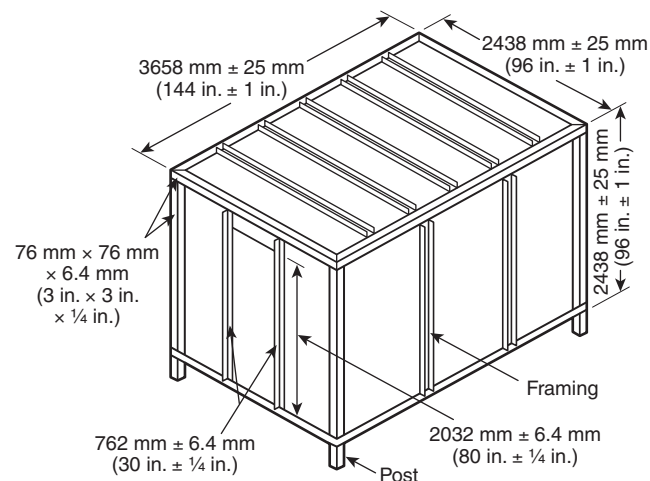


FIGURE 5.3.2 Steel Frame Support System.

5.3.3 When metal screws in combination with washers and wing nuts are specified for fastening, they shall be one of the following:

- (1) Standard 6.35 mm ($\frac{1}{4} \text{ in.}$) by 0.8 threads per mm [20 threads per in. (TPI)]
- (2) Round-head steel machine screws, 6.35 mm ($\frac{1}{4} \text{ in.}$) by 0.8 threads per mm (20 TPI) steel wing nuts
- (3) 51 mm (2 in.) outside diameter by 1 mm (0.044 in.) thick flat steel washers with a 7 mm ($\frac{9}{32} \text{ in.}$) inside diameter hole

5.3.4 Fastening screws shall be installed as shown in Figure 5.3.4.

5.3.5 The fastening pattern shall be as shown in Figure 5.3.5(a) for rigid wall materials, and in Figure 5.3.5(b) for flexible wall materials.

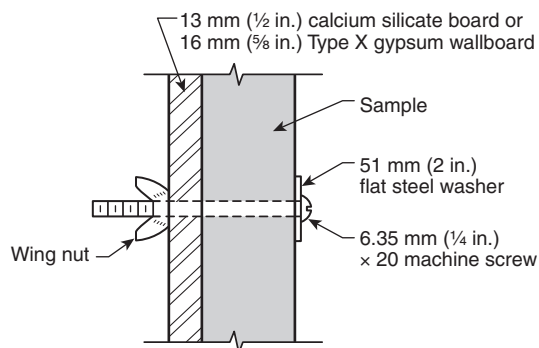


FIGURE 5.3.4 Material Fastening Technique.

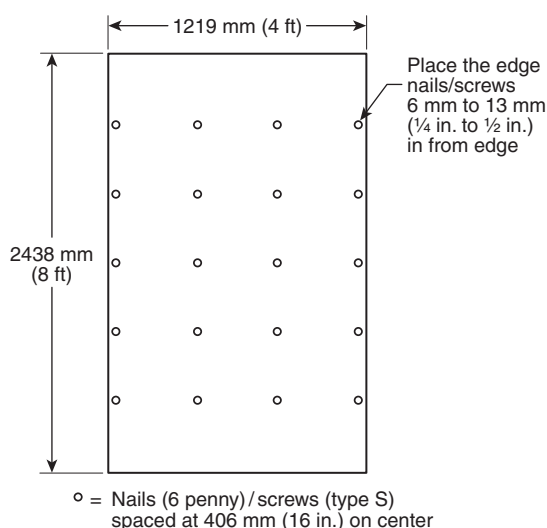


FIGURE 5.3.5(a) Attachment Details for Rigid Wall Materials.

5.3.6 The fastening pattern for all ceiling materials shall be as shown in Figure 5.3.6.

5.4 Acoustical Materials and Other Board Materials.

5.4.1 Depending on the type of field mounting required by the acoustical product, either wood furring strips or metal runners shall be used to support acoustical material.

5.4.2 Metal runners for mounting shall be attached to the substrate to replicate the field suspension systems application.

5.4.3 Wood furring strips for mounting acoustical materials and other board materials shall be nominal 25 mm × 50 mm (1 in. × 2 in.) wood furring strips and attached to a substrate to replicate the field installation.

5.5 Batt- or Blanket-Type Insulating and Other Flexible Materials. Batt- or blanket-type and other flexible materials that do not have sufficient rigidity or strength to support themselves shall be supported by round-head machine screws in combination with wing nuts and flat washers, as specified in 5.3.2, which are inserted through the material in such a way as to fasten the material to a substrate board.

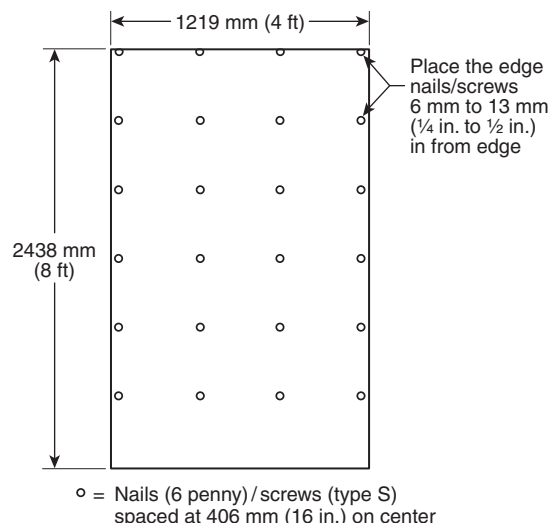


FIGURE 5.3.5(b) Attachment Details for Flexible Wall Materials.

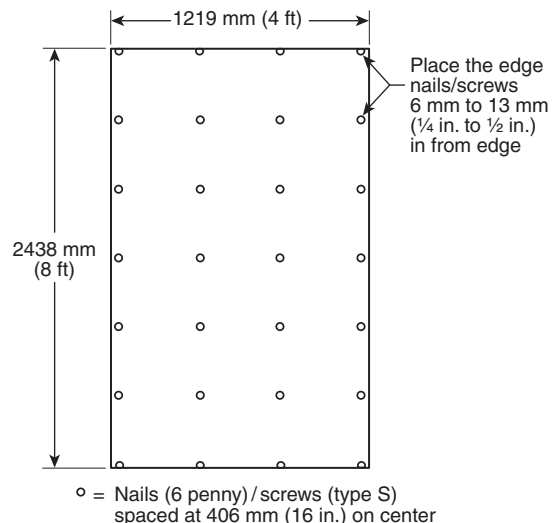


FIGURE 5.3.6 Attachment Details for Ceiling Materials.

5.6* Building Units.

5.6.1 If building units have sufficient structural integrity to support themselves, no additional mounting to a substrate board support shall be required.

5.6.2 If the building units are of such construction that they require individual components that are not self-supporting, the component shall be fastened to the substrate board as specified in 5.3.2.

5.7* Site-Fabricated Stretch Systems.

5.7.1 The material is to be tested in the form of panels that are 1.22 m ± 0.05 m (4 ft ± 2 in.) wide and extend the full height of each portion of the wall test specimen (from floor to ceiling) and the full width of each portion of the ceiling test specimen (from wall to wall).

5.7.2 Each panel shall be constructed with the frame material on the panel perimeter, the core material, and the textile, fabric or vinyl covering (*see* 3.3.2). The panel shall have a longitudinal midseam (made from the frame pieces or from a joining piece) running the entire length of the panel. Details of the panel constructions shall follow the manufacturer's instructions and shall be noted in the test report.

5.7.3 There shall be two panels on the end wall, three on each side wall, and three on the ceiling.

5.7.4 The frames of each panel shall be joined by abutting successive frames along the wall or ceiling and attaching them to the fire-rated (Type X) gypsum wallboard (or calcium silicate board) comprising the fire test room inside wall and ceiling surface using mechanical fasteners.

5.8 Wall or Ceiling Covering Materials.

5.8.1 Where the wall or ceiling coverings are intended to be applied to a substrate in actual end use, the test specimens shall consist of the wall or ceiling coverings mounted on a substrate that is appropriate for the intended application as described in 5.8.5 through 5.8.11.

5.8.2 Where the wall or ceiling covering system is a factory-produced wall panel, the adhesive shall be the same one used in the manufacture of the factory-produced wall or ceiling panel.

5.8.3 Where the wall coverings are used as part of prefabricated panels or demountable, relocatable, full height partitions, the test specimens shall consist of the prefabricated panel or the demountable, relocatable, full height partitions with the wall coverings mounted in the same manner as the actual finished product.

5.8.4 Where the panels or partitions specified in 5.8.2 are constructed at the test facility, any adhesives used shall be the same as the ones used by the manufacturer of the panels or partitions.

5.8.5* Where an adhesive is used to attach a wall or ceiling covering to a substrate, the adhesive specified by the manufacturer shall be used for construction of the test specimen in accordance with the wall or ceiling covering manufacturer's application instructions.

5.8.6 Wall or Ceiling Coverings Intended to Be Applied Directly to a Noncombustible Wall or Ceiling Surface. If the wall or ceiling coverings are intended to be applied directly to a noncombustible wall or ceiling surface, the specimens shall consist of the wall or ceiling covering mounted on a nominal 6 mm (¼ in.) thick fiber-cement board, complying with ASTM C1186, *Standard Specification for Flat Fiber-Cement Sheets*, (Grade II), and passing ASTM E136, *Standard Test Method for Behavior of Materials in a Vertical Tube Furnace at 750°C*.

5.8.7 Wall or Ceiling Coverings Intended to Be Applied over Gypsum Board. If the wall or ceiling coverings are intended to be applied over gypsum board, the specimens shall consist of the wall or ceiling covering mounted on a nominal 16 mm (⅝ in.) thick Type X gypsum wallboard, complying with ASTM C1396/C1396M, *Specification for Gypsum Board*.

5.8.8 Where a wall or ceiling covering has been tested using the test specimen described in 5.8.2 (over gypsum board), it shall not be required to be additionally tested mounted on a fiber-cement board in accordance with 5.8.4.

5.8.9 Wall or Ceiling Coverings Intended to Be Applied over a Wood Substrate. If the wall or ceiling coverings are intended to be applied over a wood substrate, the specimens shall consist of the wall or ceiling covering mounted on untreated plywood, with a face veneer of Douglas fir. Test specimens shall be prepared as indicated for laminated products in 5.9.2.

5.8.10* Wall or Ceiling Coverings Intended to Be Applied over Substrates Other than Wood, Gypsum Board, or Noncombustible Surfaces. If the wall or ceiling coverings are intended to be applied over substrates other than wood, gypsum board, or noncombustible surfaces, the specimens shall consist of the wall or ceiling covering mounted on the substrate to which it is to be applied for actual use according to the adhesive and application method specified by the manufacturer.

5.8.11 Wall or Ceiling Coverings Not Intended to Be Adhered Directly to a Wall or Ceiling Surface, but Intended to be Otherwise Supported by Framing or a Track System. The specimens shall consist of the wall or ceiling covering mounted for test in a manner that is representative of its installation.

5.8.12 Where a wall or ceiling covering has a distinct direction, the specimen shall be mounted such that the machine direction is vertical, unless the manufacturer indicates that a different method of mounting will be used in actual installations.

5.9 Laminated Products with Wood Substrates.

5.9.1 Laminated products shall be tested as they are intended to be installed.

5.9.1.1 The test specimens shall consist of the finished product, namely the combination of the facing or veneer, the adhesives or fasteners used, and the specific wood substrate that will be used.

5.9.2 If the laminated product consists of a facing or veneer intended to be applied on-site over a wood substrate, the facing or veneer shall be tested as described in 5.9.2.1 and 5.9.2.2.

5.9.2.1* The test specimens shall comply with the following:

- (1) Specimens shall consist of the facing or veneer mounted on the "A" face of nominal 12 mm (½ in.) untreated plywood with a face veneer of Douglas fir.
- (2) The plywood shall comply with NIST Voluntary Product Standard PS 1, *Structural Plywood*.
- (3) The plywood shall carry one of the following grade stamps:
 - (a) APA-The Engineered Wood Association
 - (b) TECO, indicating that the plywood has been graded PS 1 A-B and is for exterior exposure
 - (c) CSA Standard O121, *Douglas Fir Plywood*.

5.9.2.2 The adhesive used to attach the facing or veneer to the wood substrate in 5.9.2.1 shall be that specified by the manufacturer of the facing or veneer and applied in accordance with manufacturer's application instructions.

5.10 Ceiling Lining Materials. Materials intended only for lining ceilings shall be mounted only on the ceiling.

5.11 Specimen Installation.

5.11.1 For materials intended for use only as interior wall finish, the specimen shall be mounted as follows:

- (1) The specimen shall be mounted to cover three walls completely but shall not be mounted on the wall containing the door.

- (2) The specimen shall be mounted to cover fully both 2.44 m \times 3.66 m (8 ft \times 12 ft) walls and the 2.44 m \times 2.44 m (8 ft \times 8 ft) wall that does not contain the door.

5.11.2 For materials intended for use as interior wall and ceiling finish, the specimen shall be mounted on all three walls, as stated in 5.11.1, and it shall also be mounted to cover the entire ceiling.

5.11.3 For materials intended for use only as an interior ceiling finish and not to be installed on any of the walls of the fire test room, the specimen shall be mounted to cover the entire ceiling.

5.12* Conditioning. Prior to testing, the mounted specimen shall be conditioned to equilibrium in an atmosphere at a temperature of 21°C \pm 3°C (70°F \pm 5°F) and a relative humidity of 50 percent \pm 5 percent.

5.12.1 Equilibrium shall be considered to be reached when a representative piece of the specimen has achieved constant mass.

5.12.2 Constant mass shall be considered to be reached when two successive weighing operations, carried out at an interval of 24 hours, do not differ by more than 0.1 percent of the mass of the test piece or by more than 0.1 g (0.0035 oz), whichever is greater.

5.12.3 Specimens shall be tested as soon as possible after removal from such conditions if test room conditions differ from those required in Section 5.12 through 5.12.2 (*see* 6.1.3).

5.12.4 The time between removal from the conditioning room and the start of testing shall be reported.

Chapter 6 Environmental Conditions

6.1 Fire Test Room Environment.

6.1.1 The test building in which the fire test room is located shall have vents for the discharge of combustion products and shall have provisions for fresh air intake so that no oxygen-deficient air is introduced into the fire room during the test.

6.1.1.1 Prior to the start of the test, the ambient air at the mid-height entrance to the fire test room shall have a velocity of less than 0.5 m/sec (100 ft/min) in any direction, as measured at a horizontal distance of 1 m \pm 0.1 m (3.3 ft \pm 0.3 ft) from the center of the doorway.

6.1.1.2 The building shall be of a size adequate to prevent smoke accumulation in the building below the level of the top of the fire test room.

6.1.2 The ambient temperature in the test building at locations around the fire test room shall be in the range of 20°C \pm 10°C (68°F \pm 18°F), and the relative humidity shall be less than 75 percent for the duration of the test.

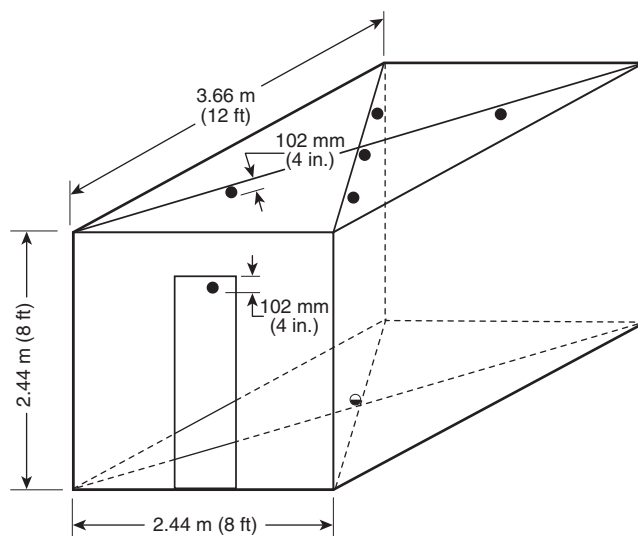
6.1.3 If test specimens are installed within the fire test room for 2 hours or more prior to testing, the following ambient conditions shall be maintained:

- (1) The ambient temperature in the fire test room, measured by one of the thermocouples in 7.1.2.4, shall be in the range of 18°C to 24°C (64°F to 75°F).
- (2) The ambient relative humidity in the fire test room shall be 50 percent \pm 5 percent.

Chapter 7 Instrumentation

7.1 Fire Test Room Instrumentation. The instrumentation described in 7.1.1 through 7.1.4 shall be provided for this test.

7.1.1* Heat Flux. A total heat flux gauge (calorimeter) shall be mounted at a height of 26 mm \pm 25 mm (1.1 in. \pm 0.9 in.) above the floor surface, facing upward, in the geometric center of the fire test room, as shown in Figure 7.1.1.



- = Thermocouples — each 102 mm (4 in.) below ceiling, with one additional thermocouple over the burner, and 102 mm (4 in.) below the ceiling.
- ⊙ = Calorimeter on floor — 26 mm (1.1 in.) above floor.

FIGURE 7.1.1 Thermocouple and Calorimeter Placement.

7.1.1.1* The heat flux gauge shall be of the Schmidt–Boelter (thermopile) type, with a full-scale design range of 50 kW/m².

7.1.1.1.1 The gauge target shall be a circular flat surface that is not more than 15 mm (0.6 in.) in diameter and is coated with a durable matte black finish, having a view angle of 180 degrees.

7.1.1.1.2 The target shall be contained within a water-cooled body in which the front face is of highly polished metal, flat, coinciding with the plane of the target, and circular, with a diameter of not more than 50 mm \pm 2 mm (2 in. \pm 0.1 in.).

7.1.1.1.3 The heat flux gauge shall have an accuracy of at least \pm 3 percent and a repeatability within 0.5 percent.

7.1.1.1.4 In operation, the heat flux gauge shall be maintained at a constant temperature, within 3°C (5°F) above the dew point, by water supplied at a temperature of 50°C to 65°C (122°F to 149°F).

7.1.1.2 The heat flux gauge shall be calibrated whenever required with two similar instruments held as reference standards that are not used for any other purpose.

7.1.1.3 One of the instruments specified in 7.1.1.2 shall be fully calibrated at yearly intervals.

7.1.2* Thermocouples. Bare Type K Chromel–Alumel thermocouples, 0.50 mm \pm 0.05 mm (20 mil \pm 2 mil) in diameter, shall be used at each required location.

7.1.2.1 The thermocouple wire, within 13 mm (0.5 in.) of the bead, shall be run along expected isotherms to minimize conduction errors.

7.1.2.2 The insulation between the Chromel–Alumel wires shall be stable to at least 1100°C (2000°F), or the wires shall be separated.

7.1.2.3 A thermocouple shall be located in the interior plane of the door opening on the door centerline, 102 mm \pm 20 mm (4 in. \pm 0.8 in.) below the top of the door opening, as shown in Figure 7.1.1.

7.1.2.4 Thermocouples shall be located at the following six positions 102 mm \pm 20 mm (4 in. \pm 0.8 in.) below the ceiling:

- (1) At the center of the ceiling
- (2) At the center of each of the four ceiling quadrants
- (3) Directly over the center of the ignition burner

7.1.2.5 The thermocouples shall be mounted on supports or shall penetrate through the ceiling with their junctions 102 mm \pm 20 mm (4 in. \pm 0.8 in.) away from a solid surface as shown in Figure 7.1.1.

7.1.2.6 There shall be no attachments to the test specimens.

7.1.2.7 Any ceiling penetration shall be just large enough to allow passage of the thermocouples.

7.1.2.8 Spackling compound or ceramic fiber insulation shall be used to backfill the holes around the thermocouple wire.

7.1.3 Target Flashover Indicators.

7.1.3.1 Two paper target flashover indicators shall be placed on the floor of the test room, as shown in Figure 7.1.3.1.

7.1.3.2 Each target shall consist of a single piece of newsprint crumpled into a ball approximately 150 mm (6 in.) in diameter.

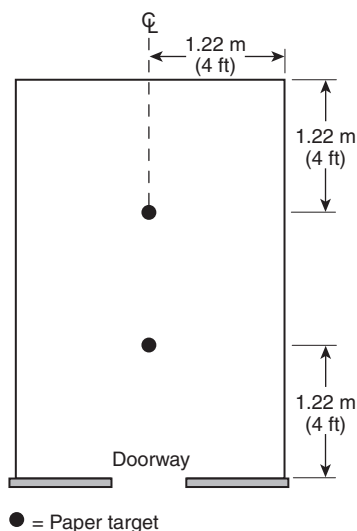


FIGURE 7.1.3.1 View of Paper Target Arrangement.

7.1.4 Photographic Equipment. Video and photographic equipment shall be used to record the spread of fire and generation of smoke in the fire test room and the fire projection from the door of the fire test room.

7.1.4.1 Location and Level of Lighting in Test Room. A nominal 300-watt flood-type, quartz halogen lamp shall be positioned in the corner diametrically opposite the burner, near the floor level. The lamp shall be aimed at the wall corner/ceiling intersection above the burner.

7.1.4.2 Wall Markings. The interior wall surfaces of the fire test room adjacent to the corner in which the burner is located shall be marked with a 300 mm (12 in.) grid.

7.1.4.3 Ceiling Material Above a Burner. For each test, when the test is for wall systems only, a new section of uncoated and unpainted nominal 16 mm ($\frac{5}{8}$ in.) gypsum wallboard, 610 mm \pm 10 mm \times 610 mm \pm 10 mm (2 ft \times 2 ft), shall be installed in the ceiling at the wall corner intersection directly above the burner.

7.1.4.4 Video Recording. A video camera with a manually adjustable iris, adjusted to prevent automatic closing of this iris opening due to brightness of the fire (at least 50 percent open), shall be used.

7.1.4.4.1 A video monitor shall be used to determine when adjustments and compensation for the brightness of the ignition flames are needed.

7.1.4.4.2 The camera mount shall be adjusted so that the camera lens is approximately 900 mm (3 ft) from the floor.

7.1.4.4.3 The camera angle and magnification shall be adjusted until the top of the doorway and the top of the burner are visible and the ceiling area directly above the fire is in full view.

7.1.4.4.4 A timer depicting “elapsed time” shall be included in all videos. The timer shall be permitted to be integral to the video camera. The timer shall be clearly viewed throughout the test period.

7.1.4.4.5 Prior to ignition of the burner, the date and laboratory test report identification number shall be filmed. The video shall be started at least 30 seconds prior to ignition of the burner, and the video recording shall be continuous for the duration of the test period.

7.1.4.5 Photographic Documentation. A photographic record (still pictures) of the test shall be made.

7.1.4.5.1 A timer depicting “elapsed time” shall be included in all photographs. The timer shall be permitted to be integral to the camera. The timer shall be clearly viewed throughout the test period.

7.1.4.5.2 Prior to ignition of the burner, the date and laboratory test report identification number shall be filmed. Color slides, photographs, or digital images shall be taken at intervals not exceeding 15 seconds for the first 3 minutes of the test and at intervals not exceeding 30 seconds thereafter for the duration of the test.

7.2 Canopy Hood and Exhaust Duct.

7.2.1 A hood shall be installed immediately adjacent to the door of the fire test room, as shown in Figure 7.2.1.

7.2.1.1 The bottom of the hood shall be level with the top surface of the fire test room.

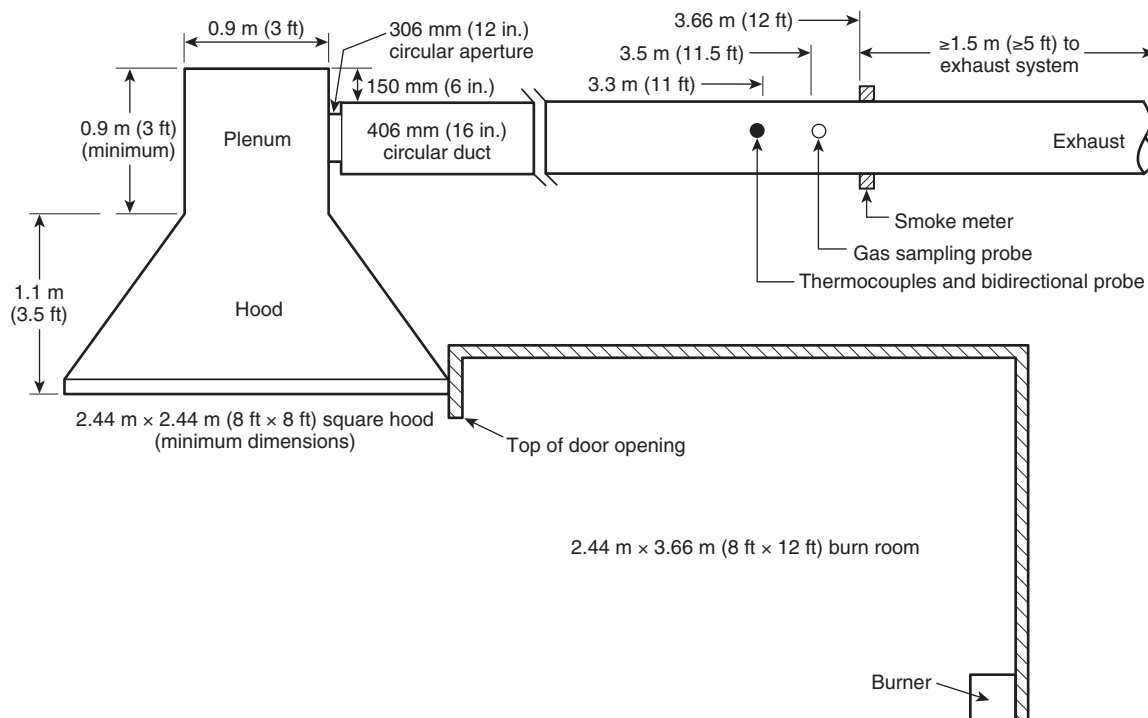


FIGURE 7.2.1 Canopy Hood and Exhaust Duct.

7.2.1.2 The face dimensions of the hood shall be at least 2.44 m \times 2.44 m (8 ft \times 8 ft), and the depth shall be 1.1 m \pm 0.1 m (3.5 ft \pm 4 in.).

7.2.1.3 The hood shall feed into a plenum that has a 0.92 m \pm 0.10 m \times 0.92 m \pm 0.10 m (3 ft \pm 4 in. \times 3 ft \pm 4 in.) cross section, as shown in Figure 7.2.1.3.

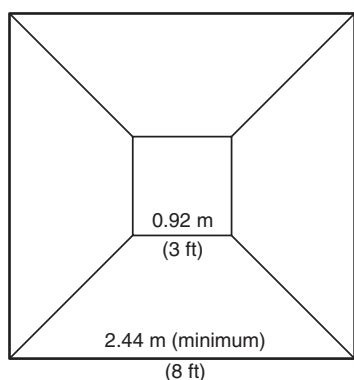


FIGURE 7.2.1.3 Plan View of Canopy Hood.

7.2.1.4 The plenum shall have a minimum height of 0.92 m (3 ft).

7.2.1.5 The plenum height shall be permitted to be increased to a maximum of 1.8 m (5 ft 11 in.) to satisfy building constraints.

7.2.1.6 The exhaust duct connected to the plenum shall be horizontal and at least 406 mm (16 in.) in diameter, and it

shall be permitted to have a circular aperture of at least 306 mm (12 in.) at its entrance or at mixing vanes in the duct.

7.2.2* The hood shall have the capability to collect all the combustion products leaving the fire test room.

7.2.3* An alternative exhaust system design shall be permitted to be used if it has been shown to produce equivalent results by meeting the calibration requirements outlined in Chapter 8.

7.3 Instrumentation in Exhaust Duct.

7.3.1 Exhaust Collection System. The exhaust collection system shall be constructed with at least the following items:

- (1) Blower
- (2) Steel hood
- (3) Duct
- (4) Bidirectional probe
- (5) Thermocouple(s)
- (6) Oxygen measurement system
- (7) Smoke obscuration measurement system (white light photocell lamp/detector or laser)
- (8) Combustion gas sampling and analysis system

7.3.2* Bidirectional Probe. A bidirectional probe, as shown in Figure 7.3.2, or an equivalent measuring system shall be used to measure gas velocity in the duct.

7.3.2.1 The probe shall consist of a short, stainless steel cylinder that is 44 mm \pm 1 mm (1.75 in. \pm 0.0625 in.) long and of 22 mm \pm 1 mm (0.875 in. \pm 0.0625 in.) inside diameter with a solid diaphragm in the center.

7.3.2.2 The pressure taps on either side of the diaphragm shall support the probe.

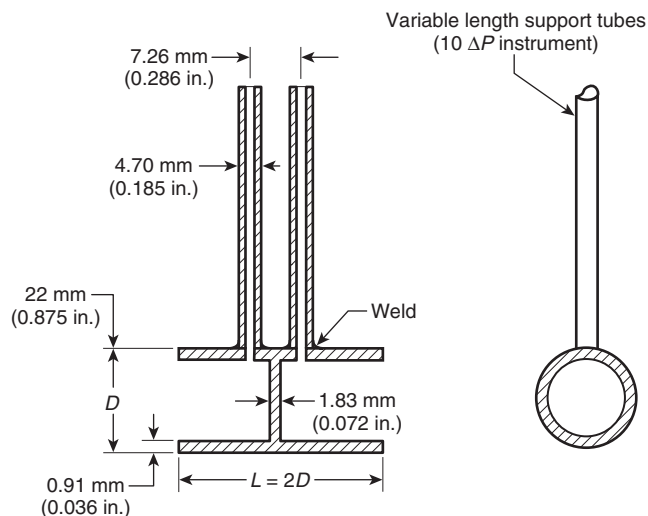


FIGURE 7.3.2 Bidirectional Probe.

7.3.2.3 The axis of the probe shall run along the centerline of the duct $3.35 \text{ m} \pm 0.1 \text{ m}$ (11 ft ± 4 in.), downstream from the entrance.

7.3.2.4* The pressure taps specified in 7.3.2.2 shall be connected to a pressure transducer that is able to resolve pressure differences of 0.25 Pa (0.001 psi water column).

7.3.2.5 The response time to a stepwise change of the duct flow rate shall not exceed 5 seconds to reach 90 percent of the final value.

7.3.3 Thermocouples.

7.3.3.1 One pair of thermocouples shall be placed $3.40 \text{ m} \pm 0.1 \text{ m}$ (11 ft 2 in. ± 4 in.) downstream of the entrance to the horizontal duct and $50 \text{ mm} \pm 5 \text{ mm}$ (2 in. ± 0.2 in.) downstream from the axis of the probe.

7.3.3.2 The pair of thermocouples specified in 7.3.3.1 shall straddle the center of the duct and be separated by $50 \text{ mm} \pm 5 \text{ mm}$ (2 in. ± 0.2 in.) from each other (see Figure 7.2.1).

7.3.4* Sampling Line.

7.3.4.1 The sampling line tubes shall be constructed of a material not influencing the concentration of the combustion gas species to be analyzed.

7.3.4.2 The sequence of the gas train, as shown in Figure 7.3.4.2, shall be as follows:

- (1) Sampling probe
- (2) Soot filter
- (3) Cold trap
- (4) Gas path pump
- (5) Vent valve
- (6) Plastic drying column and carbon dioxide removal columns (if used)
- (7) Flow controller
- (8) Oxygen analyzer

7.3.4.3 The gas train shall also include appropriate spanning and zeroing facilities.

7.3.4.4* The cold trap, or cooling column, in the gas train shall be used to remove water from the combustion gases.

7.3.4.5* For each gas analyzer used, the system delay time (or time shift) for the analyzer to reach a 90 percent response to a step change in the gas concentration shall be determined before testing.

7.3.5 Oxygen Concentration. A gas sampling tube shall be located $3.5 \text{ m} \pm 0.1 \text{ m}$ (11.5 ft ± 3 in.) downstream from the entrance to the duct at the geometric center of the duct [to within 10 mm (0.4 in.) of the center] and $150 \text{ mm} \pm 5 \text{ mm}$ (6 in. ± 0.2 in.) downstream from the axis of the probe.

7.3.5.1 The gas sampling tube specified in 7.3.5 shall be used to obtain a continuously flowing sample for determining the oxygen concentration of the exhaust gas as a function of time.

7.3.5.2 A suitable filter and cold trap shall be placed in the line ahead of the analyzer to remove particulates and water.

7.3.5.3 The oxygen analyzer shall be of the paramagnetic or polarographic type and shall be capable of measuring oxygen concentration in a range of 21 percent to 15 percent, with a relative accuracy of 100 ppm in this concentration range.

7.3.5.4 The signal from the oxygen analyzer shall be within 5 percent of its final value and occur within 30 seconds of introducing a step change in composition of the gas stream flowing past the inlet to the sampling tube.

7.3.5.5 The oxygen analyzer shall include an absolute pressure transducer for gas pressure variations.

7.3.5.6 A rotameter shall be located on the outlet of the oxygen analyzer.

7.3.6 Carbon Dioxide Concentration.

7.3.6.1 The gas sampling tube described in 7.3.4 or an alternative tube at the same location shall be used to provide a continuous sample for measuring the carbon dioxide concentration, using an analyzer with a range of 0 to 10 percent and a maximum relative error of 2 percent of full scale.

7.3.6.2 The total system response time between the sampling inlet and the meter shall be no longer than 30 seconds to reach a value within 5 percent of the final value after introducing a step change in composition of the gas stream flowing past the inlet to the sampling tube.

7.3.7 Carbon Monoxide Concentration.

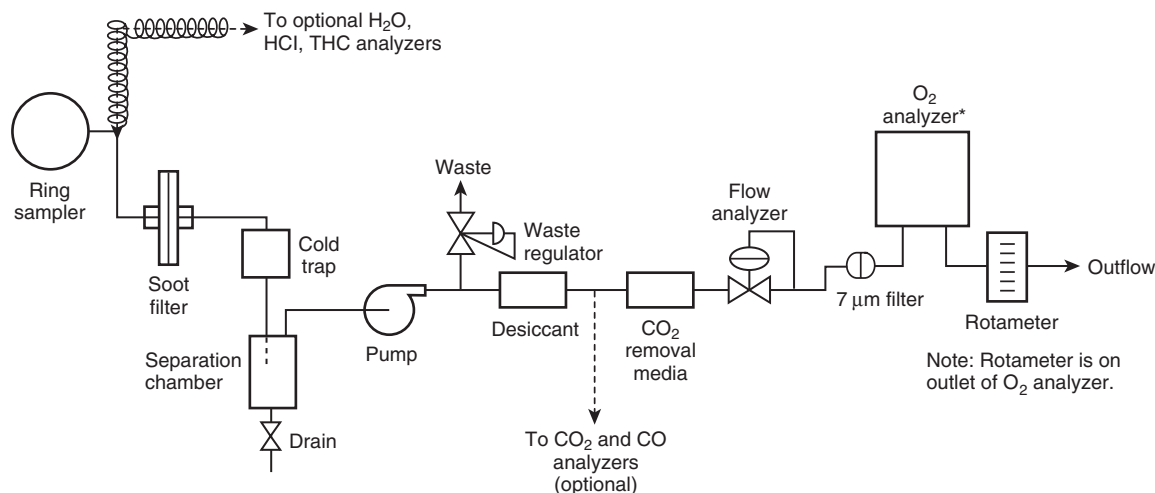
7.3.7.1 The gas sampling tube described in 7.3.4 or an alternative tube at the same location shall be used to provide a continuous sample for measuring the carbon monoxide concentration, using an analyzer with a range of 0 to 1 percent and a maximum relative error of 2 percent of full scale.

7.3.7.2 The total system response time between the sampling inlet and the meter shall be no longer than 30 seconds to reach a value within 5 percent of the final value after introducing a step change in composition of the gas stream flowing past the inlet to the sampling tube.

7.3.8 Smoke Obscuration Measurement.

7.3.8.1* An optical system shall be installed for measuring light obscuration across the centerline of the exhaust duct.

7.3.8.2 The optical density of the smoke shall be determined by measuring the light transmitted with a photometer system consisting of a white light source and a photocell/detector or a laser system.



* To include absolute pressure transducer

FIGURE 7.3.4.2 Schematic of Gas Train.

7.3.8.3 The light beam used to measure smoke obscuration shall be horizontal.

7.3.8.4* A white light photometer system shall consist of a lamp, lenses, an aperture, and a photocell, as shown in Figure 7.3.8.4.

7.3.8.5 The white light system shall be constructed so that soot deposits on the optics during a test do not reduce the light transmission by more than 5 percent.

7.3.8.6* A helium–neon laser system, as shown in Figure 7.3.8.6, shall consist of the following:

- (1) Silicon photodiodes as main beam and reference detectors
- (2) Electronics to derive an extinction and to set a zero reading

7.3.8.7 The helium–neon laser system shall be designed for split yoke mounting in two pieces that are rigidly coupled together but resiliently attached to the exhaust duct by means of refractory gasketing.

7.3.8.8 A 0.5 mW to 2 mW helium–neon laser beam shall be projected horizontally across the exhaust duct, as illustrated in Figure 7.3.8.8.

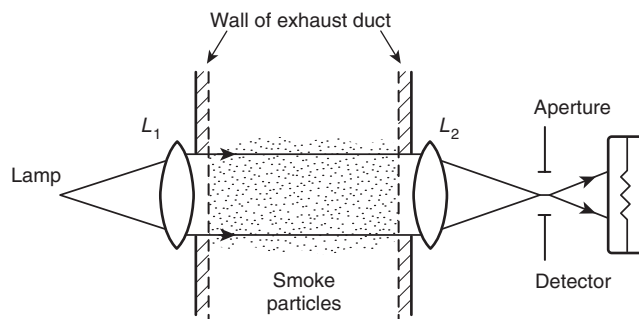


FIGURE 7.3.8.4 Optical System, Using a White Light.

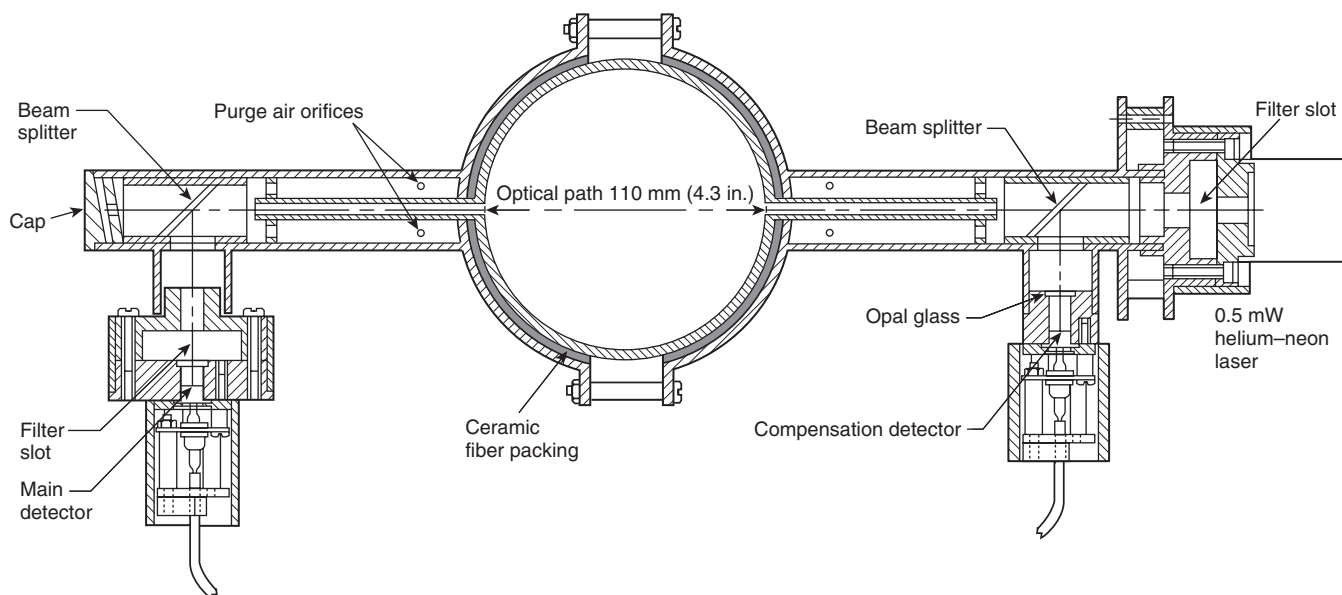


FIGURE 7.3.8.6 Laser Extinction Beam.

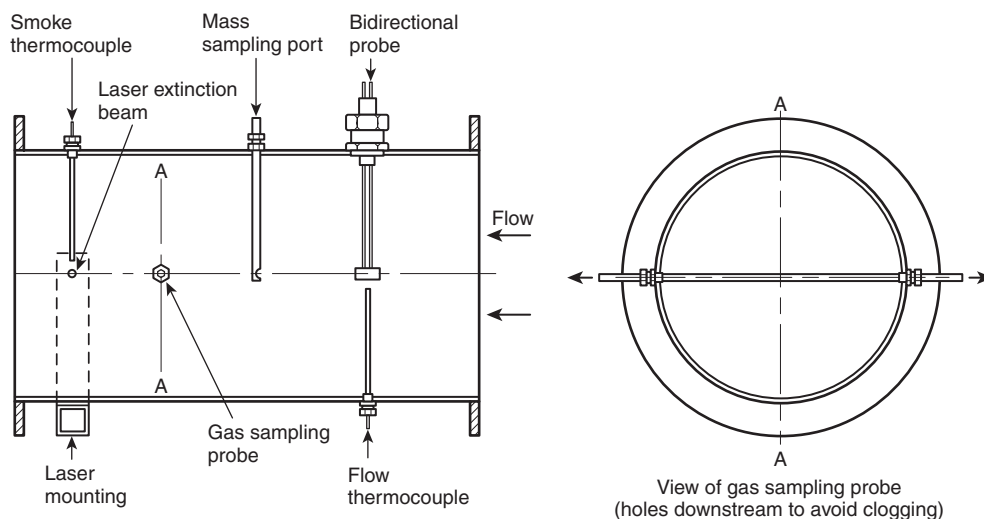


FIGURE 7.3.8.8 Laser Beam and Other Instrumentation Mounting in Exhaust Duct.

Chapter 8 Calibration

8.1 Calibration and Documentation of Ignition Source and Test Equipment.

8.1.1 The following instruments shall be calibrated with standard sources after initial installation:

- (1) Smoke meters
- (2) Flow or velocity transducers
- (3) Gas analyzers

8.1.2 A calibration test shall be performed prior to any fire test using the standard ignition source used for this test method, centered under the exhaust hood.

8.1.2.1 The calibration test required by 8.1.2 shall be performed no more than 30 days prior to any fire test.

8.1.2.2 If modifications are made to the system, a recalibration test shall be performed before any fire test.

8.1.3* The data resulting from a calibration test shall provide the following, and the results of 8.1.3(3) and 8.1.3(4) shall be used to determine the calibration factor (C), in 10.1.1:

- (1) Output as a function of time, after the burner is activated, of all instruments normally used for the standard fire test
- (2) Maximum extension of the burner flame, as recorded by still photographs taken at 30-second intervals or by continuous video recording

- (3) Temperature and velocity profiles across the duct cross-section at the location of the bidirectional probe
- (4) Differential pressure across the bidirectional probe

8.2* Calibration Procedure. The calibration procedure for heat release measurements shall be conducted as specified in 8.2.1 through 8.2.5.

8.2.1 An approximate value (C_{est}) of the calibration factor (C) shall be estimated by multiplying square meters of the cross section of the duct (in meters squared) by 22.1.

8.2.2* Propane shall be burned, as described in 4.1.3.1 through 4.1.3.3, for 15 minutes at a heat release rate of 160 kW, and the following criteria shall be met:

- (1) Measurements shall be taken at least once every 6 seconds.
- (2) The response of the system to a stepwise change of the heat output from the burner shall be a maximum of 12 seconds to 90 percent of final value.
- (3) The following values for the combustion expansion factor (α), energy (E), and effective heat of combustion (Ht_{comb}) shall be used:
 - (a) $\alpha = 1.084$
 - (b) $E = 12.8 \text{ MJ/kg}$
 - (c) $Ht_{comb} = 46.5 \text{ MJ/kg}$
- (4) Section 10.4 shall be used.

8.2.3 The total heat released and the corrected calibration factor (C_{cor}) shall be calculated so that the total heat released, as determined by the oxygen consumption calculation shown in Chapter 10, agrees with the theoretical value, obtained from measurement of the volumetric flow rate and weight loss of the fuel, to within ± 5 percent, by using the following equation:

$$C_{cor} = \frac{(Ht_{comb} \times F_{mb})}{\int \dot{q} (MW) dt} \times C_{est} \quad [8.2.3]$$

where:

C_{cor} = corrected calibration factor
 Ht_{comb} = heat of combustion of used fuel (MJ/kg)
 F_{mb} = mass fuel burned (kg)
 \dot{q} = seal release rate (kW)
 MW = fuel mass loss
 dt = time (sec)

8.2.4 The corrected value of calibration factor shall be used for all tests.

8.2.5 If the calibration factor does not agree within ± 5 percent with the value determined during the previous calibration, the following procedure shall be performed:

- (1) Check the system for leaks or other problems before proceeding with the test.
- (2) Where a problem is found, correct the problem and perform a new calibration in accordance with this chapter.

8.3 Smoke Measurement Calibration. The smoke measuring system shall be calibrated initially by using two neutral density filters of significantly different values and one at 100 percent transmission.

8.3.1 Once the calibration required by Section 8.3 is set, at least the zero value of extinction coefficient (100 percent transmission) shall be verified each day prior to testing.

8.3.2 If departure from the zero line is found at the end of a calibration test, the problem shall be corrected, and a new calibration shall be performed in accordance with this chapter.

8.4* Gas Analyzers Calibration. Gas analyzers shall be calibrated daily, prior to testing, using the manufacturer's instructions.

Chapter 9 Test Procedure

9.1 Procedure. The test procedure shall be as follows:

- (1) Establish an initial volumetric flow rate of at least $0.47 \text{ m}^3/\text{sec}$ ($1000 \text{ ft}^3/\text{min}$) through the duct, then increase the volume flow rate as required to keep the oxygen content above 14 percent and to capture all effluents from the burn room.
- (2) Turn on all sampling and recording devices, and establish steady-state baseline readings for at least 2 minutes.
- (3) Ignite the gas burner.
- (4) Start the timer once burner ignition has been observed.
- (5) Increase the gas flow rate to provide a heat release of $40 \text{ kW} \pm 1 \text{ kW}$ from the burner.
- (6) Continue the exposure at $40 \text{ kW} \pm 1 \text{ kW}$ for 5 minutes ± 10 seconds.
- (7) Within 10 seconds after the 5-minute initial exposure, increase the gas flow rate to provide a rate of heat release of $160 \text{ kW} \pm 5 \text{ kW}$ from the burner.
- (8) Continue the exposure of $160 \text{ kW} \pm 5 \text{ kW}$ for 10 minutes ± 10 seconds.
- (9) Provide visual documentation in accordance with 7.1.4.
- (10) Record the occurrence of flashover when any two of the following conditions have been attained:
 - (a) Heat release rate exceeds 1 MW.
 - (b) Heat flux at the floor exceeds 20 kW/m^2 .
 - (c) Average upper layer temperature exceeds 600°C (1112°F).
 - (d) Flames exit doorway.
 - (e) A paper target on the floor autoignites.
- (11) Shut off the ignition burner 15 minutes after start of the test, and terminate the test at that time.
- (12) Document damage after the test, using words, photographs, and drawings.

9.1.1 The laboratory shall terminate the test whenever safety considerations dictate.

9.1.2 If flashover has occurred before the 15-minute period is complete, the laboratory shall be permitted to terminate the test.

Chapter 10 Calculation Methods

10.1* Mass Flow Rate.

10.1.1 The mass flow rate through the exhaust duct shall be obtained from the velocity measured with a bidirectional probe (see 7.3.2) at one point in the duct.

10.1.2 The mass flow rate shall be calculated using the results found in Section 8.2 and the equation in 10.1.3.

10.1.3 The mass flow rate shall be monitored by using the following equation (see description of variables in Section 10.4):

$$\dot{m}_e = C \sqrt{\frac{\Delta P}{T_e}} \quad [10.1.3]$$



10.1.4* Concentration measurements of O₂, CO₂, and CO shall be used, and the oxygen depletion factor shall be calculated according to the following equation:

$$\phi = \frac{X_{O_2}^0(1 - X_{CO_2} - X_{CO}) - X_{O_2}(1 - X_{CO_2}^0)}{X_{O_2}^0(1 - X_{O_2} - X_{CO_2} - X_{CO})} \quad [10.1.4]$$

10.1.5 The rate of heat release shall be calculated according to the following equation:

$$\dot{q} = \left[E\phi - (E_{CO} - E) \frac{1 - \phi}{2} \left(\frac{X_{CO}}{X_{O_2}} \right) \right] \frac{M_{O_2}}{M} \left(\frac{\dot{m}}{1 + \phi(\alpha - 1)} \right) (X_{O_2}^*) \quad [10.1.5]$$

10.1.6 The total heat released shall be calculated according to the following equation:

$$THR = \int \dot{q} dt \quad [10.1.6]$$

10.2 Smoke Measurement Equations.

10.2.1 The extinction coefficient, k , shall be calculated from the following equation:

$$k = \frac{1}{L_p} \ln \left(\frac{I_0}{I} \right) \quad [10.2.1]$$

10.2.2 The optical density per unit light path length shall be calculated according to the following equation:

$$OD = \frac{1}{L_p} \log \left(\frac{I_0}{I} \right) \quad [10.2.2]$$

10.2.3 The volumetric flow rate at the smoke meter shall then be calculated as the product of the mass flow rate and the temperature at the measurement point (bidirectional probe), corrected by the density of air at the standard temperature 273.15 K and by the temperature, in Kelvin, as calculated in the following equation:

$$\dot{V}_s = \dot{m}_e \left(\frac{T_e}{\rho_0 273.15} \right) = \frac{\dot{m}_e T_e}{353} \quad [10.2.3]$$

10.2.4 The rate of smoke release shall be defined by the following equation:

$$RSR = \dot{V}_s k \quad [10.2.4]$$

10.2.5 Total smoke released shall be defined by the following equation:

$$TSR = \int RSR \, dt \quad [10.2.5]$$

10.3 Release Rate of Combustion Gases.

10.3.1 The release rate of carbon monoxide shall be calculated from the following equation:

$$\dot{m}_{CO} = \frac{X_{CO}(1 - X_{O_2}^0 - X_{CO_2}^0)}{1 - X_{O_2} - X_{CO_2} - X_{CO}} \left(\frac{M_{CO}}{M_a} \right) \frac{\dot{m}_e}{1 + \phi(\alpha - 1)} \quad [10.3.1]$$

10.3.2 For other combustion gases, the release rate shall be a function of the following:

- (1) Sum of the concentrations of that gas at each scan in the exhaust (that is, the products of the mole fraction of the combustion gas, overall mass flow rate for that scan, and scan period)

- (2) Molecular weight

- (3) Total test period, as shown in the following equation:

$$\dot{m}_x = \frac{\sum (X_x \dot{m}_e \Delta t_i) \left(\frac{M_x}{M_a} \right)}{\text{test period}} \quad [10.3.2]$$

10.4 Symbols. The following symbols shall be used in this standard:

C	= calibration factor for orifice plate or bidirectional probe (kg ^{1/2} , m ^{1/2} , or k ^{1/2})
E	= net heat released per unit mass of oxygen consumed (13.1 MJ/kg)
E_{CO}	= net heat released per unit mass of oxygen consumed, for carbon monoxide (17.6 MJ/kg)
Ht_{comb}	= heat of combustion of the fuel used (46.5 MJ/kg for propane and 50.0 MJ/kg for methane)
I_0	= light intensity for a beam of parallel light rays, measured in a smoke-free environment, with a detector having the same spectral sensitivity as the human eye and reaching the photodetector
I	= light intensity for a parallel light beam having traversed a certain length of smoky environment and reaching a photodetector
k	= extinction coefficient (1/m)
L_p	= light path length of beam through smoky environment, which is equal to the duct diameter (m)
\dot{m}_e	= mass flow rate in exhaust duct (kg/sec)
\dot{m}_{CO}	= release rate of carbon monoxide (kg/sec)
\dot{m}_x	= release rate of combustion product x (kg/sec)
M_a	= molecular weight of incoming and exhaust air (29 kg/kmol)
M_{CO}	= molecular weight of carbon monoxide (28 kg/kmol)
M_{O_2}	= molecular weight of oxygen (32 kg/kmol)
OD	= optical density per unit light path length (L/m)
ΔP	= pressure drop across the orifice plate or bidirectional probe (Pa)
\dot{q}	= rate of heat release (kW)
RSR	= rate of smoke release (m ² /sec)
Δt	= scan period (sec)
T_e	= gas temperature at the orifice plate or bidirectional probe (K)
test period	= duration of test period (sec)
THR	= total heat released (MJ)
TSR	= total smoke released (m ²)
\dot{V}_s	= volumetric flow rate at location of smoke meter (value adjusted for smoke measurement calculations) (m ³ /sec)
X_{CO}	= measured mole fraction of CO in exhaust flow (nondimensional)
X_{CO_2}	= measured mole fraction of CO ₂ in exhaust flow (nondimensional)
$X_{CO_2}^0$	= measured mole fraction of CO ₂ in incoming air (nondimensional)
X_{O_2}	= measured mole fraction of O ₂ in exhaust flow (nondimensional)

$X_{O_2}^0$	= measured mole fraction of O_2 in incoming air (nondimensional)
X_x	= measured mole fraction of combustion gas x in exhaust flow (nondimensional)
α	= combustion expansion factor (nondimensional) (Use a value of 1.105, unless the value for the test specimen, and not the ignition gas, is known.)
μ	= combustion expansion factor (nondimensional; use a value of 1.105, unless the value for the test specimen and not the ignition gas is known)
ϕ	= oxygen depletion factor (nondimensional)
ρ_0	= density of air at 273.15 K: 1.293 (kg/m ³)

Chapter 11 Report

11.1 Report. The report shall include the data and information specified in 11.1.1 through 11.1.8.

11.1.1 Materials. Materials shall include the following:

- (1) Name, thickness, density, and size of the test material, along with other identifying characteristics or labels
- (2) Mounting and conditioning of materials, including detailed description of mounting procedure and justification for any variations from end-use installation
- (3) Layout of specimens and attachments, including applicable drawings, in fire test room
- (4) Relative humidity and temperature of the fire test room and the test building prior to and during the test

11.1.2 Burner Gas Flow. The burner gas flow shall be the fuel gas flow to the ignition burner and its calculated rate of heat output.

11.1.3 Time History of the Total Heat Flux to Floor. The time history of the total heat flux to floor shall be the total incident heat flux at the center of the floor for the heat flux gauge as a function of time starting 3 minutes prior to the test.

11.1.4 Time History of the Gas Temperature. The time history of the gas temperature shall be the temperature of gases in the fire test room, in the doorway, and in the exhaust duct for each thermocouple as a function of time starting 3 minutes prior to the test.

11.1.5 Time History of the Rate of Heat Release of the Fire. The rate of heat release shall be calculated from the measured oxygen, carbon monoxide, and carbon dioxide concentrations and the temperature and volumetric flow rate of the gas in the duct.

11.1.5.1 The time history of the rate of heat release as well as the maximum and average values shall be reported.

11.1.5.2 The time history of total heat released as well as the final value shall be reported every 5 minutes.

11.1.5.3 The measurement method used shall be reported.

11.1.6 Time History of the Fire Growth. The time history of the fire growth shall be a transcription of the visual, photographic, audio, and written records of the fire test.

11.1.6.1 The records shall indicate the following:

- (1) Time of ignition of the wall finish and the ceiling finish where present

- (2) Approximate location of the flame front most distant from the ignition source at intervals not exceeding 15 seconds during the fire test
- (3) Time of flashover
- (4) Time at which flames extend outside the doorway

11.1.6.2 Still photographs taken at intervals not exceeding 30 seconds or continuous video recording shall be supplied.

11.1.6.3 Drawings and photographs or video recording showing the extent of the damage of the materials after the test shall be supplied.

11.1.7 Time History of Smoke Obscuration.

11.1.7.1 The smoke obscuration shall be described by means of the optical density, rate of smoke release, and total smoke released measured with the instrumentation in the exhaust duct.

11.1.7.2 The following shall be reported:

- (1) Time histories of smoke release rate, optical density, and volumetric duct flow rate, as well as the maximum and average values
- (2) Total smoke release time history, as well as the final value and the values every 5 minutes
- (3) Details of the smoke obscuration measurement equipment used, including the orientation of the light beam

11.1.8 Damage during test shall be documented after the test using text, pictures, and drawings.

11.2 Report of Significant Events. A record shall be provided of all significant events, such as the following:

- (1) Ignition times
- (2) Time at which flames extend beyond the doorway
- (3) Times for all indicators of flashover
- (4) Actual time to flashover per 9.1(10)
- (5) Other significant events and observations

11.3 Report of Single Point Key Properties.

11.3.1 The test report shall also include the following individual properties:

- (1) If flashover has occurred, time at which it occurred and the criteria used to determine flashover
- (2) Peak heat release rate measured (kW)
- (3) Time at which the peak heat release rate has been measured (s)
- (4) Total heat released during the test (MJ)
- (5) Peak incident heat flux at each heat flux gauge used (kW/m²)
- (6) Time at which each peak heat flux has been measured (s)
- (7) Peak smoke release rate measured (m³/s)
- (8) Time at which the peak smoke release rate has been measured (s)
- (9) Total smoke released during the test (m³)

11.4* Discussion of Performance. A complete discussion of sample performances shall be provided and shall include the following:

- (1) Flame spread to ceiling during initial exposure
- (2) Burning to outer extremities of walls or ceilings
- (3) Presence of burning droplets on the floor that persist in burning for 30 seconds or more
- (4) Visibility information in the fire test room
- (5) Other pertinent details with respect to fire growth
- (6) Melting or dripping of materials



Annex A Explanatory Material

Annex A is not a part of the requirements of this NFPA document but is included for informational purposes only. This annex contains explanatory material, numbered to correspond with the applicable text paragraphs.

A.1.1 The performance of all wall and ceiling covering systems is addressed in this standard. Textile and expanded vinyl wall covering systems are included in this standard and they are also addressed specifically in NFPA 265. Further information on testing of textile wall coverings can be found in Fisher et al., *Room Fire Tests of Textile Wall Coverings*. Textile and expanded vinyl wall coverings are permitted by some codes (e.g., NFPA 101) to be tested using NFPA 265.

A.1.3.10 One important difference between the ignition source used in this test method and that used in NFPA 265 is that the flame in the NFPA 265 ignition source does not reach the ceiling. Thus, the NFPA 265 ignition source should not be used for testing materials that are to be installed on the ceiling.

There are significant differences between the ignition source used in this test method and that source used in the NFPA 265 test method. Although both test methods use the same burner equipment, there are differences in burner placement and fuel flow. The burner arrangement (spacing, gas flows, and so on) used in this test method provides a sustained flame impingement on the ceiling of the test room, whereas the burner arrangement in NFPA 265 does not. The spacing of the burner, moreover, can change the heat flux to which the test wall materials are exposed.

A.3.3.3 Textile. The concept of a textile wall covering is intended to include carpets or other types of textile floor coverings applied to panels or walls. [265, 2015]

A.4.1.1 The ignition source described in 4.1.1 has been referred to as the “proposed ASTM room-corner test” ignition source. See further information in “Interlaboratory Test Program on Proposed ASTM Standard Method for Room Fire Test of Wall and Ceiling Materials and Assemblies.”

A.4.1.4 The heat of combustion corresponds to a propane gas flow rate of 26.9 L/min at 40 kW and 107.5 L/min at 160 kW for propane with a net heat of combustion of 46.5 MJ/kg, under standard conditions of 101 kPa pressure (absolute pressure of 14.7 psi) and 20°C (68°F). Figure A.4.1.4 is a schematic of two typical gas flow regulation systems.

A.4.2.1 A study by R. D. Peacock and J. N. Breese (NBSIR 82-2516, *Computer Fire Modeling for the Prediction of Flashover*) examined the effect of geometric room changes on the minimum energy required to cause flashover. It showed that increased room height beyond 2.4 m (8 ft) changed the minimum needed flashover energy (expressed as percent) as follows, where ΔH is the increase in room height expressed in meters:

$$\text{percent } 100 + 5.3\Delta H$$

Thus, for instance, if the height were changed by 0.2 m, the energy scaling would be changed by 1.06 percent. This difference is completely insignificant, since few fire measurements can be made to a repeatability or reproducibility of better than 10 percent. The effects of changing floor areas were similarly modest. Fire test room dimensions having a tolerance of ± 0.1 m should be entirely adequate for reproducibility.

A.4.2.2 To facilitate the mounting of the instruments and of the ignition source, it is convenient to place the fire test room so that the floor can be reached from its underside.

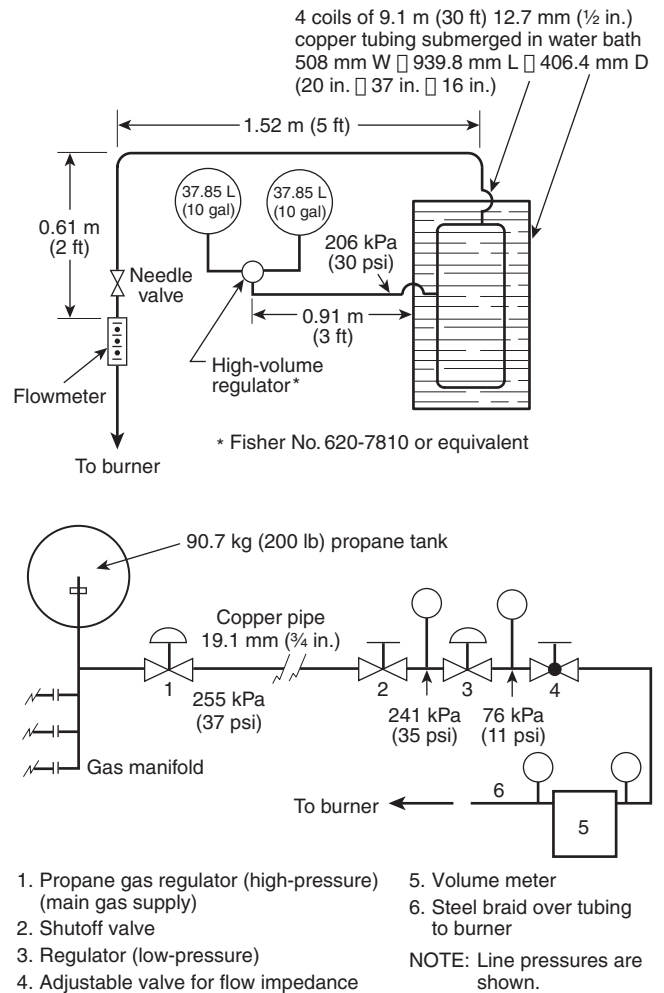


FIGURE A.4.1.4 Two Typical Gas Flow Regulation Systems.

A.4.2.4 If self-supporting panels are tested, a separate exterior frame or block compartment is not required.

A.5.1.1 It has been shown that the specific adhesive used to secure a specimen can significantly affect the fire performance of a wall covering system. Therefore, the adhesive used should be the same as that intended for actual use.

A.5.1.3 For some building materials, none of the methods described are applicable. In such cases, other means of attachment should be devised. Whenever possible, these specimens should be mounted using the same method of attachment as is intended in the actual use installation.

A.5.2.1.2(4) It is not the intent to require each sample to be tested over various thicknesses or types of gypsum wallboard.

A.5.2.1.3 Steel and mineral wool are examples of acceptable alternative substrates based on the end use.

A.5.6 Materials falling within this category include organic or inorganic materials, or both, formed or laminated into blocks, boards, planks, slabs, or sheets of various sizes, thicknesses, or shapes.

A.5.7 The mounting method is based on the mounting method used for site-fabricated stretch systems in both the

ASTM E84 and ANSI/UL 723 fire tests as described in ASTM E2573, *Standard Practice for Specimen Preparation and Mounting of Site-Fabricated Stretch Systems to Assess Surface Burning Characteristics*. It is very important that all components of the system be exposed to the burner flame.

A.5.8.5 It has been shown that the specific adhesive used to secure a specimen can significantly affect the fire performance of a wall or ceiling covering system; therefore, the adhesive utilized should be the same as that intended for actual use.

A.5.8.10 References to wood are not intended to apply to wood to which a fire retardant treatment has been applied.

A.5.9.2.1 Information is available from APA-The Engineered Wood Association, 7011 South 19th, Tacoma, WA 98466 and from TECO, 5650 Terra Court, Sun Prairie, WI 53590.

A.5.12 For products in which vaporization of solvents occurs, such as those using adhesives, or products containing wood, a conditioning time of 4 weeks is not uncommon.

A.7.1.1 It is preferable to mount the total heat flux gauge at a height of 5 mm to 30 mm (approximately 0.2 in. to 1.2 in.) above the floor surface.

A.7.1.1.1 The gauge target receives radiation and possibly, to a small extent, convection. Further information on instrumentation for heat flux measurements can be found in “An Instrument for the Direct Measurement of Intense Thermal Radiation,” by R. Gardon. Two types of heat flux measuring gauges are commonly used. The sensing techniques between the two gauges are different. The Schmidt–Boelter gauge uses a thermopile, whereas the Gardon gauge uses foil.

Due to the difference in sensing techniques, one manufacturer recommends Schmidt–Boelter gauges for measuring heat fluxes in the range of 5 kW/m² to 25 kW/m², whereas Gardon gauges are more appropriate for heat flux values greater than 50 kW/m².

The difference in the sensing techniques can affect the precision of the heat flux measurements, depending on the application and the amount of the incident flux. The manufacturer also reports that, in general, the Schmidt–Boelter gauges tend to be more robust, especially during cleaning. For these reasons, this test method requires the use of the Schmidt–Boelter gauges.

One method of maintaining the heat flux gauge temperature is by water supplied at a temperature of 50°C to 65°C (122°F to 149°F). A flow rate of at least 0.38 L/min (0.1 gal/min) is recommended to maintain the gauge temperature. Other methods or flow rates are acceptable.

A.7.1.2 Metal-clad thermocouples with ceramic powder filling have been found to be satisfactory for this purpose, but silicone-impregnated glass insulated thermocouples are likely to break at temperatures above 800°C (1472°F).

A.7.2.2 Experience suggests that a draft capable of moving up to 2.5 m³/sec (5150 standard ft³/min), which is equivalent to 5.7 m³/sec (11,800 ft³/min) at 400°C (752°F), during the test is sufficient for fires up to flashover.

A.7.2.3 Some performance requirements are detailed in A.7.2.2.

A.7.3.2 A bidirectional probe is preferable to a pitot-static tube for measuring velocity in the exhaust duct because it minimizes problems of clogging with soot.

A.7.3.2.4 Capacitance transducers have been found to be most stable for this application.

A.7.3.4 Stainless steel sampling lines have been shown to be satisfactory.

A.7.3.4.4 The recommended approach to designing a cooling (and drying) column (to remove water from the combustion gases) is to use a refrigerated column and separation chamber fitted with a drain plug from which the collected water is removed from time to time. Alternative approaches or devices that are shown to give equivalent results are also acceptable. It is very important to remove water from the combustion stream before it reaches the oxygen, carbon monoxide, and carbon dioxide analyzers.

A.7.3.4.5 Combustion gas concentration measurements require the use of appropriate time shifts in order to account for the time required for gas analyzer response and for combustion gas transit time within the sampling system. (See Annex B.)

A.7.3.8.1 White light and laser systems have been shown to give similar results. See the following publications for more information:

- (1) “Comparison of Smoke Release from Building Products,” by B. Ostman
- (2) “Rate of Heat Release Testing for Vinyl Wire and Cable Materials with Reduced Flammability and Smoke: Small Scale and Full Scale Tests,” by A. W. Coaker, M. M. Hirschler, and C. L. Shoemaker (research showing differences between white light and laser measurements in one application)
- (3) “Optical Measurement of Smoke,” by W. K. Chow and K. F. Lai

A.7.3.8.4 The following information is being provided for informational purposes only and has not been independently verified, certified, or endorsed by NFPA or any of its technical committees. The following describes an example of a white light measuring system that has been found to be satisfactory:

- (1) Lenses — Plano convex: diameter 40 mm, focal length 50 mm
- (2) Lamp — Osram Halo Stars: 64410: 6 V, 10 W or equivalent
- (3) Photocell — United Detector Technology: PIN 10 AP or equivalent
- (4) Power supply — Gresham Lion Ltd: Model G x012 or equivalent

A.7.3.8.6 The following information is being provided for informational purposes only and has not been independently verified, certified, or endorsed by NFPA or any of its technical committees. The following describes an example of a laser measuring system that has been found to be satisfactory:

- (1) Helium–neon laser — Aerotech OEM-05P or equivalent
- (2) Laser power supply — Aerotech LSS-05 or equivalent
- (3) Photocells — Hamamatsu S1336-44BK or equivalent

A.8.1.3 Measurement of the temperature and velocity profiles across the duct cross section at the location of the bidirectional probe and of the differential pressure across the bidirectional probe is not needed when the calibration factor, *C*, is used, as described in Section 8.2.

A.8.2 The estimated calibration factor is likely to be within 20 percent of the correct value.

A.8.2.2 Effective heat of combustion from propane is 44.2 MJ/kg, which is calculated at a combustion efficiency of 95 percent for propane, which is 46.5 MJ/kg.



A.8.4 ASTM E800, *Standard Guide for Measurement of Gases Present or Generated During Fires*, gives guidance on the calibration of gas analyzers.

A.10.1 Further information can also be found in “Measuring Rate of Heat Release by Oxygen Consumption,” by M. L. Janssens and in “Oxygen Consumption Calorimetry,” by M. L. Janssens and W. J. Parker.

The mass flow rate is usually placed along the centerline of the duct. The velocity profile is obtained by measuring velocity at a sufficient number of representative points over the diameter or cross section of the duct prior to any fire tests. Detailed procedures for obtaining this profile are described in *The Measurement of Air Flow*, by E. Ower and R. Pankhurst. Usually, conditions in full-scale fire tests are such that the flow in the duct is turbulent, resulting in a shape factor, k_c (ratio of the average velocity to the velocity along the centerline), that is close to 1.

Due to considerable soot production in many fires, pitot-static tubes are generally not useful because of the potential for clogging of the holes. In response to this problem, B. J. McCaffrey and G. Heskestad (“A Robust Bidirectional Low-Velocity Probe for Flame and Fire Application”) designed the bidirectional probe described in 7.3.2. This system involves measuring the differential pressure across the probe and the centerline velocity.

A.10.1.4 Water vapor must be removed before the sample air is introduced into the oxygen analyzer. A water trap and desiccant can be used to remove water.

A.11.4 Tests with ceiling finish materials that are not self-supporting and fall to the floor of the test room during the test should be deemed invalid.

Annex B Method of Determining Suitability of Oxygen Analyzers for Making Heat Release Measurements

This annex is not a part of the requirements of this NFPA document but is included for informational purposes only.

B.1 General. The paramagnetic type of oxygen analyzer is best suited for fire gas analysis. Electrochemical analyzers or analyzers using zirconia sensors have generally been found not to have adequate sensitivity or suitability for this type of work. The normal range of the instrument to be used is 0 percent to 25 percent volume oxygen. The linearity of paramagnetic analyzers is usually better than can be checked by a user laboratory, thus verifying that their linearity is not necessary. It is important, however, to confirm the noise and short-term drift of the instrument used.

B.2 Procedure.

B.2.1 The analyzer suitability is checked by the following steps:

- (1) Connect two different gas bottles that are approximately 2 percentage points apart (for example, 15 percent volume and 17 percent volume) to a selector valve at the inlet of the analyzer.
- (2) Connect the electrical power, and let the analyzer warm up for 24 hours, with one of the test gases from B.2.1(1) flowing through it.
- (3) Connect a data acquisition system to the output of the analyzer and perform the following procedure:

- (a) Quickly switch from the first gas bottle to the second bottle, and immediately start collecting data, taking one data point per second.
- (b) Collect data for 20 minutes.
- (4) Determine the drift by using a least-squares analysis fitting procedure to pass a straight line through the last 19 minutes of data as follows:
 - (a) Extrapolate the line back through the first minute of data.
 - (b) Determine the short-term drift as the difference between the readings at 0 minutes and at 20 minutes on the fitted straight line.
 - (c) Record the drift in units of parts per million of oxygen.
- (5) Calculate the noise, which is represented by the root-mean-square deviation around the fitted straight line, and record it in units of parts per million of oxygen.

B.2.2 The analyzer is suitable for use in heat release measurements if the sum of the drift plus the noise terms is 250 ppm oxygen. It is important to note that both terms must be expressed as positive numbers.

B.3 Additional Precautions. A paramagnetic oxygen analyzer is directly sensitive to barometric pressure changes at its outlet port and to flow rate fluctuations in the sample supply stream. It is essential that the flow rate be regulated. Either a flow rate regulator of the mechanical diaphragm type or an electronic mass flow rate controller should be used. To protect against errors due to changes in barometric pressure, one of the following procedures should be used:

- (1) Control the back pressure to the analyzer with a back pressure regulator of the absolute-pressure type.
- (2) Electrically measure the actual pressure at the detector element, and provide a signal correction for the analyzer output.

Annex C Acceptance Criteria

This annex is not a part of the requirements of this NFPA document but is included for informational purposes only.

C.1 The acceptance criteria in C.2 are used by NFPA 101 and NFPA 5000 as well as the *International Building Code* and the *International Fire Code*, issued by the International Code Council.

C.2 Interior finish materials should be considered as demonstrating satisfactory performance if the following conditions are met:

- (1) During the 40 kW exposure, flames should not spread to the ceiling.
- (2) During the 160 kW exposure, the interior finish should comply with the following:
 - (a) Flame should not spread to the outer extremity of the sample on any wall or ceiling.
 - (b) Flashover should not occur.
- (3) The peak rate of heat release throughout the test should not exceed 800 kW.
- (4) The total smoke released throughout the test should not exceed 1000 m³.

Annex D Informational References

D.1 Referenced Publications. The documents or portions thereof listed in this annex are referenced within the informational sections of this recommended practice and are not part of the recommendations of this document unless also listed in Chapter 2 for other reasons.

D.1.1 NFPA Publications. National Fire Protection Association, 1 Batterymarch Park, Quincy, MA 02169-7471.

NFPA 101®, *Life Safety Code*®, 2015 edition.

NFPA 265, *Standard Methods of Fire Tests for Evaluating Room Fire Growth Contribution of Textile or Expanded Vinyl Wall Coverings on Full Height Panels and Walls*, 2015 edition.

NFPA 5000®, *Building Construction and Safety Code*®, 2015 edition.

D.1.2 Other Publications.

D.1.2.1 ANSI/UL Publications. Underwriters Laboratories Inc., 333 Pfingsten Road, Northbrook, IL 60062-2096.

ANSI/UL 723, *Standard for Test for Surface Burning Characteristics of Building Materials*, 2008, revised 2013.

D.1.2.2 ASTM Publications. ASTM International, 100 Barr Harbor Drive, West Conshohocken, PA, 19428-2959.

ASTM E84, *Standard Test Method for Surface Burning Characteristics of Building Materials*, 2013a.

ASTM E800, *Standard Guide for Measurement of Gases Present or Generated During Fires*, 2007.

ASTM E2573, *Standard Practice for Specimen Preparation and Mounting of Site-Fabricated Stretch Systems to Assess Surface Burning Characteristics*, 2012.

ASTM Institute for Standards Research, “Interlaboratory Test Program: Proposed ASTM Standard Method for Room Fire Test of Wall and Ceiling Materials and Assemblies,” International Fire Standards Project Report, PCN: 33-000012-31, October 1994.

D.1.2.3 ICC Publications. International Code Council, 5203 Leesburg Pike, Suite 600, Falls Church, VA 22041.

International Building Code (IBC), 2015.

International Fire Code (IFC), 2015.

D.1.2.4 NIST Publications. National Institute of Standards and Technology, U.S. Department of Commerce, Fire Research Information Service, Building and Fire Research Laboratory, 100 Bureau Drive, Gaithersburg, MD 20899.

R. D. Peacock and J. N. Breese, NBSIR 82-2516, *Computer Fire Modeling for the Prediction of Flashover*, 1982.

D.1.2.5 Other Publications. Chow, W. K., and K. F. Lai, “Optical Measurement of Smoke,” *Fire and Materials*, vol. 16, 135–139, 1992.

Coaker, A. W., M. M. Hirschler, and C. L. Shoemaker, “Rate of Heat Release Testing for Vinyl Wire and Cable Materials with Reduced Flammability and Smoke: Small Scale and Full Scale Tests,” in *Proc. 15th. Int. Conf. on Fire Safety, Product Safety Corp.*, San Francisco, C. J. Hilado, ed. January 8–12, pp. 220–256, 1990.

Fisher, F. L., B. MacCracken, and R. B. Williamson, *Room Fire Tests of Textile Wall Coverings*, ES-7853, Service to Industry Report No. 85-4, Fire Research Laboratory, University of California, Berkeley, CA, April 1986.

Gardon, R., “An Instrument for the Direct Measurement of Intense Thermal Radiation,” *Review of Scientific Instruments*, vol. 24, no. 5, pp. 366–370, May 1953.

Janssens, M. L., “Measuring Rate of Heat Release by Oxygen Consumption,” *Fire Technology*, pp. 234–249, August 1991.

Janssens, M. L., and W. J. Parker, “Oxygen Consumption Calorimetry,” in *Heat Release in Fires*, V. Babrauskas and S. J. Grayson, eds. Elsevier, London, Chapter 3, pp. 31–59, 1992.

McCaffrey, B. J., and G. Heskestad, “A Robust Bidirectional Low-Velocity Probe for Flame and Fire Application,” *Combustion and Flame*, vol. 26, no. 1, pp. 125–127, February 1976.

Ostman, B., “Comparison of Smoke Release from Building Products,” *Int. Conf. FIRE. Control the Heat...Reduce the Hazard*, London, Oct. 24–25, 1988, Fire Research Station, UK, paper 8.

Ower, E., and R. Pankhurst, *The Measurement of Air Flow*, Pergamon Press, 5th ed., pp. 112–147, 1977.

D.2 Informational References. (Reserved)

D.3 References for Extracts in Informational Sections. NFPA 265, *Standard Methods of Fire Tests for Evaluating Room Fire Growth Contribution of Textile or Expanded Vinyl Wall Coverings on Full Height Panels and Walls*, 2015 edition.

Index

Copyright © 2014 National Fire Protection Association. All Rights Reserved.

The copyright in this index is separate and distinct from the copyright in the document that it indexes. The licensing provisions set forth for the document are not applicable to this index. This index may not be reproduced in whole or in part by any means without the express written permission of NFPA.

-A-	
Acceptance Criteria	Annex C
Administration	Chap. 1
Application	1.3
Purpose	1.2
Scope	1.1, A.1.1
Average Upper Gas Layer Temperature	
Definition	3.3.1
-C-	
Calculation Methods	Chap. 10
Mass Flow Rate	10.1, A.10.1
Release Rate of Combustion Gases	10.3
Smoke Measurement Equations	10.2
Symbols	10.4
Calibration	Chap. 8
Calibration and Documentation of Ignition Source and Test Equipment	8.1
Calibration Procedure	8.2, A.8.2
Gas Analyzers Calibration	8.4, A.8.4
Smoke Measurement Calibration	8.3
-D-	
Definitions	Chap. 3
-E-	
Environmental Conditions	Chap. 6
Fire Test Room Environment	6.1
Explanatory Material	Annex A
-I-	
Informational References	Annex D
Instrumentation	Chap. 7
Canopy Hood and Exhaust Duct	7.2
Fire Test Room Instrumentation	7.1
Heat Flux	7.1.1, A.7.1.1
Photographic Equipment	7.1.4
Ceiling Material Above a Burner	7.1.4.3
Location and Level of Lighting in Test Room	7.1.4.1
Photographic Documentation	7.1.4.5
Video Recording	7.1.4.4
Wall Markings	7.1.4.2
Target Flashover Indicators	7.1.3
Thermocouples	7.1.2, A.7.1.2
Instrumentation in Exhaust Duct	7.3
Bidirectional Probe	7.3.2, A.7.3.2
Carbon Dioxide Concentration	7.3.6
Carbon Monoxide Concentration	7.3.7
Exhaust Collection System	7.3.1
Oxygen Concentration	7.3.5
Sampling Line	7.3.4, A.7.3.4
Smoke Obscuration Measurement	7.3.8
Thermocouples	7.3.3
-M-	
Method of Determining Suitability of Oxygen Analyzers for Making Heat Release Measurements	Annex B
-R-	
Referenced Publications	Chap. 2
General	2.1
NFPA Publications. Reserved	2.2
Other Publications	2.3
References for Extracts in Mandatory Sections	2.4
Report	Chap. 11
Discussion of Performance	11.4, A.11.4
Report	11.1
Burner Gas Flow	11.1.2
Materials	11.1.1
Time History of Smoke Obscuration	11.1.7
Time History of the Fire Growth	11.1.6
Time History of the Gas Temperature	11.1.4
Time History of the Rate of Heat Release of the Fire	11.1.5
Time History of the Total Heat Flux to Floor	11.1.3
Report of Significant Events	11.2
Report of Single Point Key Properties	11.3
-S-	
Shall	
Definition	3.2.1
Should	
Definition	3.2.2
Site-Fabricated Stretch System	
Definition	3.3.2
Specimen Mounting	Chap. 5
Acoustical Materials and Other Board Materials	5.4
Backing Materials	5.3
Batt- or Blanket-Type Insulating and Other Flexible Materials	5.5
Building Units	5.6, A.5.6
Ceiling Lining Materials	5.10
Conditioning	5.12, A.5.12
Laminated Products with Wood Substrates	5.9
Materials Using Substrates	5.2
Site-Fabricated Stretch Systems	5.7, A.5.7
Specimen Installation	5.11
Specimen Mounting	5.1
Wall or Ceiling Covering Materials	5.8
Wall or Ceiling Coverings Intended to Be Applied Directly to a Noncombustible Wall or Ceiling Surface	5.8.6
Wall or Ceiling Coverings Intended to Be Applied over a Wood Substrate	5.8.9
Wall or Ceiling Coverings Intended to Be Applied over Gypsum Board	5.8.7
Wall or Ceiling Coverings Intended to Be Applied over Substrates Other than Wood, Gypsum Board, or Noncombustible Surfaces	5.8.10, A.5.8.10
Wall or Ceiling Coverings Not Intended to Be Adhered Directly to a Wall or Ceiling Surface, but Intended to be Otherwise Supported by Framing or a Track System	5.8.11
Standard	
Definition	3.2.3
-T-	
Test Equipment	Chap. 4
Geometry and Construction of the Fire Test Room	4.2
Ignition Source	4.1
Test Procedure	Chap. 9
Procedure	9.1
Textile	
Definition	3.3.3, A.3.3.3