

NFPA[®]

289

**Standard Method
of Fire Test for Individual
Fuel Packages**

2019



IMPORTANT NOTICES AND DISCLAIMERS CONCERNING NFPA® STANDARDS

NOTICE AND DISCLAIMER OF LIABILITY CONCERNING THE USE OF NFPA STANDARDS

NFPA® codes, standards, recommended practices, and guides (“NFPA Standards”), of which the document contained herein is one, are developed through a consensus standards development process approved by the American National Standards Institute. This process brings together volunteers representing varied viewpoints and interests to achieve consensus on fire and other safety issues. While the NFPA administers the process and establishes rules to promote fairness in the development of consensus, it does not independently test, evaluate, or verify the accuracy of any information or the soundness of any judgments contained in NFPA Standards.

The NFPA disclaims liability for any personal injury, property, or other damages of any nature whatsoever, whether special, indirect, consequential or compensatory, directly or indirectly resulting from the publication, use of, or reliance on NFPA Standards. The NFPA also makes no guaranty or warranty as to the accuracy or completeness of any information published herein.

In issuing and making NFPA Standards available, the NFPA is not undertaking to render professional or other services for or on behalf of any person or entity. Nor is the NFPA undertaking to perform any duty owed by any person or entity to someone else. Anyone using this document should rely on his or her own independent judgment or, as appropriate, seek the advice of a competent professional in determining the exercise of reasonable care in any given circumstances.

The NFPA has no power, nor does it undertake, to police or enforce compliance with the contents of NFPA Standards. Nor does the NFPA list, certify, test, or inspect products, designs, or installations for compliance with this document. Any certification or other statement of compliance with the requirements of this document shall not be attributable to the NFPA and is solely the responsibility of the certifier or maker of the statement.

REMINDER: UPDATING OF NFPA STANDARDS

Users of NFPA codes, standards, recommended practices, and guides (“NFPA Standards”) should be aware that NFPA Standards may be amended from time to time through the issuance of a Tentative Interim Amendment (TIA) or corrected by Errata. An official NFPA Standard at any point in time consists of the current edition of the document together with any TIAs and Errata then in effect.

To determine whether an NFPA Standard has been amended through the issuance of Tentative Interim Amendments or corrected by Errata, go to www.nfpa.org/docinfo to choose from the list of NFPA Standards or use the search feature to select the NFPA Standard number (e.g., NFPA 13). The document information page provides up-to-date document-specific information as well as postings of all existing TIAs and Errata. It also includes the option to register for an “Alert” feature to receive an automatic email notification when new updates and other information are posted regarding the document.

IMPORTANT NOTICES AND DISCLAIMERS CONCERNING NFPA® STANDARDS

ADDITIONAL NOTICES AND DISCLAIMERS

Updating of NFPA Standards

Users of NFPA codes, standards, recommended practices, and guides (“NFPA Standards”) should be aware that these documents may be superseded at any time by the issuance of new editions or may be amended from time to time through the issuance of Tentative Interim Amendments or corrected by Errata. An official NFPA Standard at any point in time consists of the current edition of the document together with any Tentative Interim Amendments and any Errata then in effect. In order to determine whether a given document is the current edition and whether it has been amended through the issuance of Tentative Interim Amendments or corrected through the issuance of Errata, consult appropriate NFPA publications such as the National Fire Codes® Subscription Service, visit the NFPA website at www.nfpa.org, or contact the NFPA at the address listed below.

Interpretations of NFPA Standards

A statement, written or oral, that is not processed in accordance with Section 6 of the Regulations Governing the Development of NFPA Standards shall not be considered the official position of NFPA or any of its Committees and shall not be considered to be, nor be relied upon as, a Formal Interpretation.

Patents

The NFPA does not take any position with respect to the validity of any patent rights referenced in, related to, or asserted in connection with an NFPA Standard. The users of NFPA Standards bear the sole responsibility for determining the validity of any such patent rights, as well as the risk of infringement of such rights, and the NFPA disclaims liability for the infringement of any patent resulting from the use of or reliance on NFPA Standards.

NFPA adheres to the policy of the American National Standards Institute (ANSI) regarding the inclusion of patents in American National Standards (“the ANSI Patent Policy”), and hereby gives the following notice pursuant to that policy:

NOTICE: The user’s attention is called to the possibility that compliance with an NFPA Standard may require use of an invention covered by patent rights. NFPA takes no position as to the validity of any such patent rights or as to whether such patent rights constitute or include essential patent claims under the ANSI Patent Policy. If, in connection with the ANSI Patent Policy, a patent holder has filed a statement of willingness to grant licenses under these rights on reasonable and nondiscriminatory terms and conditions to applicants desiring to obtain such a license, copies of such filed statements can be obtained, on request, from NFPA. For further information, contact the NFPA at the address listed below.

Law and Regulations

Users of NFPA Standards should consult applicable federal, state, and local laws and regulations. NFPA does not, by the publication of its codes, standards, recommended practices, and guides, intend to urge action that is not in compliance with applicable laws, and these documents may not be construed as doing so.

Copyrights

NFPA Standards are copyrighted. They are made available for a wide variety of both public and private uses. These include both use, by reference, in laws and regulations, and use in private self-regulation, standardization, and the promotion of safe practices and methods. By making these documents available for use and adoption by public authorities and private users, the NFPA does not waive any rights in copyright to these documents.

Use of NFPA Standards for regulatory purposes should be accomplished through adoption by reference. The term “adoption by reference” means the citing of title, edition, and publishing information only. Any deletions, additions, and changes desired by the adopting authority should be noted separately in the adopting instrument. In order to assist NFPA in following the uses made of its documents, adopting authorities are requested to notify the NFPA (Attention: Secretary, Standards Council) in writing of such use. For technical assistance and questions concerning adoption of NFPA Standards, contact NFPA at the address below.

For Further Information

All questions or other communications relating to NFPA Standards and all requests for information on NFPA procedures governing its codes and standards development process, including information on the procedures for requesting Formal Interpretations, for proposing Tentative Interim Amendments, and for proposing revisions to NFPA standards during regular revision cycles, should be sent to NFPA headquarters, addressed to the attention of the Secretary, Standards Council, NFPA, 1 Batterymarch Park, P.O. Box 9101, Quincy, MA 02269-9101; email: stds_admin@nfpa.org.

For more information about NFPA, visit the NFPA website at www.nfpa.org. All NFPA codes and standards can be viewed at no cost at www.nfpa.org/docinfo.

Copyright © 2018 National Fire Protection Association®. All Rights Reserved.

NFPA® 289

Standard

Method of Fire Test for Individual Fuel Packages

2019 Edition

This edition of NFPA 289, *Standard Method of Fire Test for Individual Fuel Packages*, was prepared by the Technical Committee on Fire Tests. It was acted on by NFPA at its June Association Technical Meeting held June 11-14, 2018, in Las Vegas, NV. It was issued by the Standards Council on August 14, 2018, with an effective date of September 3, 2018, and supersedes all previous editions.

This edition of NFPA 289 was approved as an American National Standard on September 3, 2018.

Origin and Development of NFPA 289

The 2009 edition of NFPA 289 was the first for this standard. It established a fire test method for determining the contribution of individual fuel packages to heat and smoke release when exposed to various ignition sources. Testing protocols were provided for three types of individual fuel packages: single decorative objects such as signs, wall hangings, and mannequins; exhibit booths; and stage sets including backdrops and scenery. NFPA 289 is a standard test method for determining the extent to which these fuel packages contribute to fire growth and the potential for the spread of fire in a controlled environment.

The 2013 edition included updates to referenced publications, extracted definitions, and annex material. New requirements were added to Chapter 5 on ignition source power levels. Also, provisions for alternative probe locations were updated.

The 2019 edition has been updated to reflect the advancements in laboratory technology, including lighting and recording. New provisions for fire-retardant-treated natural Christmas trees were added, including conditioning requirements. Alternate provisions were added when testing for forensic fire reconstruction or research purposes.

Technical Committee on Fire Tests

Barry L. Badders, Jr., Chair
Intertek Testing Services, TX [RT]

Scott W. Adams, Park City Fire Service District, UT [E]
Rep. International Fire Marshals Association
Farid Alfawakhiri, American Iron and Steel Institute, IL [M]
James A. Burns, New York State Department, NY [E]
Rep. Firemen's Association of the State of New York
Karen C. Carpenter, Southwest Research Institute, TX [RT]
Gordon H. Damant, Inter-City Testing & Consulting Corp. of California, CA [SE]
Rick D. Davis, National Institute of Standards & Technology, MD [RT]
Scott E. Dillon, Crane Engineering, MN [SE]
William E. Fitch, Phyrefish.com, FL [SE]
Richard G. Gann, Gaithersburg, MD [SE]
Marcelo M. Hirschler, GBH International, CA [SE]
Paul A. Hough, Armstrong World Industries, Inc., PA [M]
William E. Koffel, Koffel Associates, Inc., MD [SE]
Sergei V. Levchik, Israel Chemicals Ltd. (ICL-IP), NY [M]
Rep. ACC-North American Flame Retardant Alliance

James Andrew Lynch, The Fire Solutions Group, PA [SE]
John Martell, Professional Fire Fighters of Maine/IAFF, ME [L]
Rep. International Association of Fire Fighters
Rodney A. McPhee, Canadian Wood Council, Canada [M]
Kathleen A. Newman, Firetect, CA [M]
Arthur J. Parker, JENSEN HUGHES, MD [SE]
Michael L. Savage, Sr., City of Rio Rancho, NM [E]
Michael Schmeida, Gypsum Association, OH [M]
David T. Sheppard, U.S. Bureau of Alcohol, Tobacco, Firearms & Explosives, MD [RT]
Dwayne E. Sloan, UL LLC, NC [RT]
Stanislav I. Stoliarov, University of Maryland, MD [SE]
Kuma Sumathipala, American Wood Council, VA [M]
Dong Zeng, FM Global, MA [I]
Rep. FM Global

Alternates

Erik H. Anderson, Koffel Associates, Inc., MD [SE]
(Alt. to William E. Koffel)

Jesse J. Beitel, JENSEN HUGHES, MD [SE]
(Alt. to Arthur J. Parker)

Richard J. Davis, FM Global, MA [I]
(Alt. to Dong Zeng)

Timothy Earl, GBH International, MI [SE]
(Alt. to Marcelo M. Hirschler)

Sam W. Francis, American Wood Council, PA [M]
(Alt. to Kuma Sumathipala)

Stephen Paul Fuss, U.S. Bureau of Alcohol, Tobacco, Firearms & Explosives, MD [RT]
(Alt. to David T. Sheppard)

Justin A. Geiman, Fire and Risk Alliance LLC, MD [SE]
(Alt. to James Andrew Lynch)

Karl Dana Houser, Intertek, PA [RT]
(Alt. to Barry L. Badders, Jr.)

Marc L. Janssens, Southwest Research Institute, TX [RT]
(Alt. to Karen C. Carpenter)

Ineke Van Zeeland, Canadian Wood Council, Canada [M]
(Alt. to Rodney A. McPhee)

Matthew T. Vinci, International Association of Fire Fighters, DC [L]
(Alt. to John Martell)

Robert J. Wills, American Iron and Steel Institute, AL [M]
(Alt. to Farid Alfawakhiri)

Luke C. Woods, UL LLC, MA [RT]
(Alt. to Dwayne E. Sloan)

Joe Ziolkowski, American Furniture Manufacturers Association, NC [M]
(Voting alt.)

Nonvoting

Robert H. Barker, American Fiber Manufacturers Association, VA [M]
Rep. American Fiber Manufacturers Association

Rohit Khanna, U.S. Consumer Product Safety Commission, MD [C]
Rep. U.S. Consumer Product Safety Commission

Tracy L. Vecchiarelli, NFPA Staff Liaison

This list represents the membership at the time the Committee was balloted on the final text of this edition. Since that time, changes in the membership may have occurred. A key to classifications is found at the back of the document.

NOTE: Membership on a committee shall not in and of itself constitute an endorsement of the Association or any document developed by the committee on which the member serves.

Committee Scope: This Committee shall have primary responsibility for documents on fire testing procedures, for reviewing existing fire test standards and recommending appropriate action to NFPA, for recommending the application of and advising on the interpretation of acceptable test standards for fire problems of concern to NFPA technical committees and members, and for acting in a liaison capacity between NFPA and the committees of other organizations writing fire test standards. This Committee does not cover fire tests that are used to evaluate extinguishing agents, devices, or systems.

Contents

Chapter 1 Administration	289- 4	7.2 Fire Test Documentation.	289- 8
1.1 Scope.	289- 4	7.3 Canopy Hood and Exhaust Duct.	289- 9
1.2 Purpose.	289- 4	7.4 Instrumentation in Exhaust Duct.	289- 9
1.3 Symbols.	289- 4	7.5 Load Cell.	289- 11
Chapter 2 Referenced Publications	289- 5	Chapter 8 Calibration	289- 11
2.1 General.	289- 5	8.1 Calibration and Documentation of Ignition Source and Test Equipment.	289- 11
2.2 NFPA Publications. (Reserved)	289- 5	8.2 Calibration Procedure.	289- 11
2.3 Other Publications.	289- 5	8.3 Smoke Measurement Calibration.	289- 12
2.4 References for Extracts in Mandatory Sections.	289- 5	8.4 Gas Analyzer Calibration.	289- 12
Chapter 3 Definitions	289- 5	Chapter 9 Test Procedure	289- 12
3.1 General.	289- 5	9.1 Procedure.	289- 12
3.2 NFPA Official Definitions.	289- 5	Chapter 10 Calculation Methods for Total Rate of Heat Release	289- 12
3.3 General Definitions.	289- 5	10.1 Mass Flow Rate.	289- 12
Chapter 4 Summary of Method	289- 6	10.2 Smoke Measurement Equations.	289- 13
4.1 General.	289- 6	10.3 Release Rate of Combustion Gases.	289- 13
Chapter 5 Individual Fuel Packages	289- 6	Chapter 11 Report	289- 13
5.1 Decorative Objects.	289- 6	11.1 Report.	289- 13
5.2 Exhibit Booths.	289- 6	11.2 Discussion of Performance.	289- 14
5.3 Theater, Motion Picture, and Television Stage Settings.	289- 7	Annex A Explanatory Material	289- 14
5.4 Artificial Vegetation.	289- 7	Annex B Method of Determining Suitability of Oxygen Analyzers for Making Heat Release Measurements	289- 17
5.5 Natural Christmas Trees.	289- 7	Annex C Informational References	289- 17
5.6 Other Individual Fuel Packages.	289- 7	Index	289- 19
Chapter 6 Environmental Conditions	289- 7		
6.1 Conditioning.	289- 7		
6.2 Fire Test Area Environment.	289- 8		
Chapter 7 Test Equipment and Instrumentation	289- 8		
7.1 Ignition Source.	289- 8		

NFPA 289

Standard

Method of Fire Test for Individual Fuel Packages

2019 Edition

IMPORTANT NOTE: This NFPA document is made available for use subject to important notices and legal disclaimers. These notices and disclaimers appear in all publications containing this document and may be found under the heading "Important Notices and Disclaimers Concerning NFPA Standards." They can also be viewed at www.nfpa.org/disclaimers or obtained on request from NFPA.

UPDATES, ALERTS, AND FUTURE EDITIONS: New editions of NFPA codes, standards, recommended practices, and guides (i.e., NFPA Standards) are released on scheduled revision cycles. This edition may be superseded by a later one, or it may be amended outside of its scheduled revision cycle through the issuance of Tentative Interim Amendments (TIAs). An official NFPA Standard at any point in time consists of the current edition of the document, together with all TIAs and Errata in effect. To verify that this document is the current edition or to determine if it has been amended by TIAs or Errata, please consult the National Fire Codes® Subscription Service or the "List of NFPA Codes & Standards" at www.nfpa.org/docinfo. In addition to TIAs and Errata, the document information pages also include the option to sign up for alerts for individual documents and to be involved in the development of the next edition.

NOTICE: An asterisk (*) following the number or letter designating a paragraph indicates that explanatory material on the paragraph can be found in Annex A.

A reference in brackets [] following a section or paragraph indicates material that has been extracted from another NFPA document. As an aid to the user, the complete title and edition of the source documents for extracts in mandatory sections of the document are given in Chapter 2 and those for extracts in informational sections are given in Annex C. Extracted text may be edited for consistency and style and may include the revision of internal paragraph references and other references as appropriate. Requests for interpretations or revisions of extracted text shall be sent to the technical committee responsible for the source document.

Information on referenced publications can be found in Chapter 2 and Annex C.

Chapter 1 Administration

1.1 Scope.

1.1.1* This standard describes a fire test method for determining the fire test response characteristics of individual fuel packages when exposed to various ignition sources.

1.1.2 This fire test method is applicable to individual fuel packages.

1.1.3 This fire test method is not intended to evaluate fire resistance.

1.1.4 This standard contains detailed descriptions of three types of individual fuel packages to be investigated, as follows:

- (1)* Single decorative object
- (2) Exhibit booth

(3) Stage setting

1.1.5* This test method shall not be used as an alternate compliance test for items for which there is an existing full-scale heat release test such as seating furniture, mattresses, stacking chairs, interior finish, textile wall coverings, or mattress sets.

1.1.6 When tests are conducted for the purpose of forensic fire reconstruction, or research, this test standard shall apply to any individual fuel package.

1.2 Purpose.

1.2.1 This method of test measures certain fire test response characteristics of individual fuel packages under specified fire exposure conditions.

1.2.2 The method of test provides the following data:

- (1) Extent of fire growth
- (2) Rate of heat release by the individual fuel package
- (3) Total heat released by the individual fuel package
- (4) Smoke obscuration, as determined in the exhaust duct
- (5) Production of carbon monoxide, as determined in the exhaust duct
- (6) Emissions of other combustion gases, as determined in the exhaust duct
- (7) Gas temperatures at suitable locations
- (8) Mass loss of single decorative objects

1.2.3* The performance observed in the test is based on the test conditions.

1.2.4 The method of test does not provide the following:

- (1) Full information concerning toxicity of combustion gases
- (2) Fire resistance of systems

1.3 Symbols. The following symbols are used in this standard:

C	=	calibration factor for orifice plate or bidirectional probe ($\text{kg}^2 \text{m}^2 \text{K}^2$)
C_{est}	=	an approximate value of the calibration factor
C_{cor}	=	corrected calibration factor
dt	=	time (sec)
F_{mb}	=	mass of fuel burned (kg)
E	=	net heat released per unit mass of oxygen consumed (13.1 MJ/kg)
E_{CO}	=	net heat released per unit mass of oxygen consumed, for CO (17.6 MJ/kg)
Ht_{comb}	=	heat of combustion of the fuel used (46.5 MJ/kg for propane and 50.0 MJ/kg for methane)
I_0	=	light intensity for a beam of parallel light rays, measured in a smoke-free environment, with a detector having the same spectral sensitivity as the human eye and reaching the photodetector
I	=	light intensity for a parallel light beam having traversed a certain length of smoky environment and reaching photodetector
k	=	smoke extinction coefficient (1/m)

(continues)

L_p	=	light path length of beam through smoky environment, which is equal to the duct diameter (m)
\dot{m}_e	=	mass flow rate in exhaust duct (kg/sec)
\dot{m}_{CO}	=	release rate of CO (kg/sec)
\dot{m}_x	=	release rate of combustion product x (kg/sec)
M_a	=	molecular weight of incoming and exhaust air (29 kg/kmol)
M_{CO}	=	molecular weight of CO (28 kg/kmol)
M_{O_2}	=	molecular weight of oxygen (32 kg/kmol)
MW	=	fuel mass loss
OD	=	optical density per unit light path length (1/m)
ΔP	=	pressure drop across the orifice plate or bidirectional probe (Pa)
\dot{q}	=	rate of heat release (kW)
RSR	=	rate of smoke release (m ² /sec)
Δt	=	scan period (sec)
T_e	=	gas temperature at the orifice plate or bidirectional probe (K)
test period	=	duration of test (sec)
THR	=	total heat released (MJ)
TSR	=	total smoke released (m ²)
\dot{V}_s	=	volumetric flow rate at location of smoke meter (value adjusted for smoke measurement calculations) (m ³ /sec)
X_{CO}	=	measured mole fraction of CO in exhaust flow (nondimensional)
X_{CO_2}	=	measured mole fraction of CO ₂ in exhaust flow (nondimensional)
$X_{CO_2}^0$	=	measured mole fraction of CO ₂ in incoming air (nondimensional)
X_{O_2}	=	measured mole fraction of O ₂ in exhaust flow (nondimensional)
$X_{O_2}^0$	=	measured mole fraction of O ₂ in incoming air (nondimensional)
X_x	=	measured mole fraction of combustion gas x in exhaust flow (nondimensional)
α	=	combustion expansion factor (nondimensional; use a value of 1.105, unless the value for the test specimen, and not the ignition gas, is known)
ϕ	=	oxygen depletion factor (nondimensional)
ρ_0	=	density of air at 273.15 K: 1.293 (kg/m ³)

Chapter 2 Referenced Publications

2.1 General. The documents or portions thereof listed in this chapter are referenced within this standard and shall be considered part of the requirements of this document.

2.2 NFPA Publications. (Reserved)

2.3 Other Publications.

Merriam-Webster's Collegiate Dictionary, 11th edition, Merriam-Webster, Inc., Springfield, MA, 2003.

2.4 References for Extracts in Mandatory Sections.

NFPA 270, *Standard Test Method for Measurement of Smoke Obscuration Using a Conical Radiant Source in a Single Closed Chamber*, 2018 edition.

Chapter 3 Definitions

3.1 General. The definitions contained in this chapter shall apply to the terms used in this standard. Where terms are not defined in this chapter or within another chapter, they shall be defined using their ordinarily accepted meanings within the context in which they are used. *Merriam-Webster's Collegiate Dictionary*, 11th edition, shall be the source for the ordinarily accepted meaning.

3.2 NFPA Official Definitions.

3.2.1* Approved. Acceptable to the authority having jurisdiction.

3.2.2* Authority Having Jurisdiction (AHJ). An organization, office, or individual responsible for enforcing the requirements of a code or standard, or for approving equipment, materials, an installation, or a procedure.

3.2.3* Listed. Equipment, materials, or services included in a list published by an organization that is acceptable to the authority having jurisdiction and concerned with evaluation of products or services, that maintains periodic inspection of production of listed equipment or materials or periodic evaluation of services, and whose listing states that either the equipment, material, or service meets appropriate designated standards or has been tested and found suitable for a specified purpose.

3.2.4 Shall. Indicates a mandatory requirement.

3.2.5 Should. Indicates a recommendation or that which is advised but not required.

3.2.6 Standard. An NFPA Standard, the main text of which contains only mandatory provisions using the word "shall" to indicate requirements and that is in a form generally suitable for mandatory reference by another standard or code or for adoption into law. Nonmandatory provisions are not to be considered a part of the requirements of a standard and shall be located in an appendix, annex, footnote, informational note, or other means as permitted in the NFPA Manuals of Style. When used in a generic sense, such as in the phrase "standards development process" or "standards development activities," the term "standards" includes all NFPA Standards, including Codes, Standards, Recommended Practices, and Guides.

3.3 General Definitions.

3.3.1 Fuel Package. A grouping of one or more items whose proximity is sufficiently close that the ignition of one item can be expected to cause the spread of fire to the remaining items in the fuel package.

3.3.2 Individual Fuel Package. An item or a group of items for which the fire test response characteristics are to be measured.

3.3.3 Heat of Combustion.

3.3.3.1 Effective Heat of Combustion. The measured heat release divided by the mass loss for a specified time period.

3.3.3.2 Net Heat of Combustion. The oxygen bomb calorimeter value for the heat of combustion, corrected for the gaseous state of product water.

3.3.4 Heat Release Rate. The heat evolved from the specimen, per unit of time.

3.3.5* Heating Flux. The rate of heat transferred per unit area to a surface, typically expressed in kW/m² or Btu/s-ft².

3.3.6* Initial Test Heat Flux. Amount of heat received by a specimen surface per unit area and unit time at the initiation of a test.

3.3.7 Oxygen Consumption Principle. The expression of the relationship between the mass of oxygen consumed during combustion and the heat released.

3.3.8 Smoke Obscuration. The reduction of light transmission by smoke, as measured by light attenuation. [270, 2018]

Chapter 4 Summary of Method

4.1 General.

4.1.1* The individual fuel package shall be tested by using one of the ignition sources as described in 4.1.7.

4.1.2* Decorative objects shall be tested as described in Section 5.1.

4.1.3 Exhibit booths shall be tested as described in Section 5.2.

4.1.4 Theater, motion picture, and television stage settings shall be tested as described in Section 5.3.

4.1.5 Individual fuel packages and decorative objects, other than those described in 4.1.2 through 4.1.4, shall be tested as described in Section 5.6.

4.1.6 The test methods described herein shall use a gas burner to produce a diffusion flame to expose the individual fuel package, except for forensic fire reconstruction, or research, as discussed in 4.1.8.

4.1.6.1 The burner shall produce a prescribed rate of heat output as described in 4.1.7.

4.1.6.2 The fire test response characteristics of the individual fuel package shall be measured by constant monitoring of heat release, smoke release, and the temperature of the gases in the exhaust duct connected to the hood.

4.1.6.3 The combustion products shall be collected in a hood that feeds into a plenum connected to an exhaust duct in which measurements of the gas velocity, temperature, smoke obscuration, and concentrations of selected gases are made.

4.1.7 The ignition source to be used shall be a gas burner as described in Section 7.1.

4.1.7.1* The ignition source shall be set at one of six power levels, namely, 20, 40, 70, 100, 160, or 300 kW, and shall be applied for an exposure period of 15 minutes.

4.1.7.2* The choice of power levels shall be based both on the type of individual fuel package to be tested and on its potential application.

4.1.8 Alternate Ignition Sources.

4.1.8.1 When tests are conducted for the purpose of forensic fire reconstruction, or research, the use of an alternate ignition source shall be permitted.

4.1.8.2 When an ignition source other than as described in 4.1.7 is used, the ignition source details shall be documented in sufficient detail in 11.1.2 of the report so that other laboratories will be able to replicate the experiments.

Chapter 5 Individual Fuel Packages

5.1 Decorative Objects.

5.1.1 Individual decorative objects of irregular shape such as, but not limited to, mannequins and other such objects used for display purposes shall be tested in the size and shape intended for use.

5.1.2 Materials intended for use in the manufacture of decorative objects comprising individual fuel packages that are planar such as, but not limited to, murals, wall hangings, and signs shall be permitted to be tested as a material in the thickness and size intended for use.

5.1.2.1 Objects intended to exceed width and height dimensions of 2.4 m (8 ft) shall be tested at maximum width and height dimensions not exceeding 2.4 m (8 ft).

5.1.2.2 The decorative object shall be mechanically supported in such a manner that the support system does not interfere with the fire test response characteristics of the decorative object.

5.1.3 The individual fuel package shall be placed on a protective barrier large enough to prevent melting or material from falling off the protective barrier as described in 5.1.4 and 7.5.2.1.

5.1.4 The protective barrier shall serve to catch falling material and to protect the load cell as described in Section 7.5.

5.1.5 For individual fuel packages of irregular shape, the ignition source shall be placed on the protective barrier (*see 5.1.3*) and in contact with the fuel package or located to optimize ignition and fire growth of the individual fuel package.

5.1.6 For murals, signs, wall hangings, and other objects that are planar, the vertical centerline of the ignition source shall be aligned with the vertical centerline of the decorative object ± 25 mm (± 1 in.) and located within 25 mm ± 2.5 mm (1 in. ± 0.1 in.) of the vertical face of the decorative object.

5.1.7* Decorative objects shall be tested using the ignition source at an initial power level of 20 kW.

5.2 Exhibit Booths.

5.2.1* Panels intended for exhibit booth construction shall be constructed into a 2.4 m ± 0.1 m \times 2.4 m ± 0.1 m (8 ft ± 0.32 ft \times 8 ft ± 0.32 ft) rear wall section and two 1.8 m ± 0.1 m long \times 2.4 m ± 0.1 m high (6 ft ± 0.32 ft long \times 8 ft ± 0.32 ft high) side-wall sections.

5.2.1.1 The booth shall be an open-top, open-front assembly.

5.2.1.2 The panels shall be mechanically fastened to angle iron framework not exceeding 51 mm (2 in.) in nominal size.

5.2.2 The ignition source shall be placed on the protective barrier (*see 5.1.3*) in one of the rear corners of the exhibit booth within 25 mm \pm 2.5 mm (1 in. \pm 0.1 in.) of the rear wall and the side wall.

5.2.3* Exhibit booths shall be tested using the ignition source at an initial power level of 20 kW.

5.3 Theater, Motion Picture, and Television Stage Settings.

5.3.1 Material intended for use in the construction of theater, motion picture, and television stage settings such as, but not limited to, simulated backdrops, boulders, mountains, and caves, shall be permitted to be formed into 50.8 mm (2 in.) thick panels and assembled into an open-front structure with two side walls, a back wall, and a ceiling, meeting at 90 degree (\pm 5 degrees) angles in the corners.

5.3.2 The interior dimensions of the structure shall be 1.5 m \times 1.5 m \times 1.5 m (5 ft \times 5 ft \times 5 ft) [\pm 0.1 m (\pm 0.32 ft)].

5.3.3 For open-front structures, the ignition source shall be placed on the protective barrier in one of the rear corners of the structure within 25 mm \pm 2.5 mm (1 in. \pm 0.1 in.) of the rear wall and the side wall.

5.3.4 For other than open-front structures, the ignition source shall be placed on the protective barrier (*see 5.1.3*) and in contact with the individual fuel package or located to optimize ignition and fire growth of the individual fuel package.

5.3.5* Theater, motion picture, and television stage settings shall be tested using the ignition source at an initial power level of 20 kW.

5.4* Artificial Vegetation.

5.4.1 Artificial vegetation items shall be tested by placing the item in the center of a protective barrier covering a load cell (*see Section 7.5*) and exposing it to the gas burner described in 4.1.7 at a 20 kW power level.

5.4.2 For artificial vegetation items other than Christmas trees, the edge of the burner shall be located within 25 mm \pm 2.5 mm (1 in. \pm 0.1 in.) of the base of the item.

5.4.3 For artificial Christmas trees, the vertical centerline of the burner shall be located below the position with the highest density of branches and within 100 mm (4 in.) vertically from the bottom branches.

5.5 Natural Christmas Trees.

5.5.1 To investigate the effect of fire-retardant treatments on natural Christmas trees, the procedure to be followed shall be as stated in 5.5.2 through 5.5.5, after conditioning in accordance with 5.5.6.

5.5.2 The Christmas tree shall be tested by placing it in the center of a protective barrier, placed above a load cell (*see Section 7.5*), and exposing it to the gas burner described in 4.1.7 with the power level described in 5.5.4.

5.5.3 The vertical centerline of the burner shall be located 150 mm \pm 2.5 mm (6 in. \pm 1 in.) inside the outermost portion of the tree and within 100 mm (4 in.) vertically from the bottom branches.

5.5.4 The gas supplied to the propane gas burner shall be controlled linearly from a zero flow rate to a flow rate of 234 cm³/sec (29.8 standard ft³/hr) at 2.5 minutes to provide a theoretical net peak heat release rate of 20 kW/m² at 2.5 minutes. The gas input shall then be linearly decreased to reach an input of 0 kW (zero flow rate) at 5.0 minutes.

5.5.5 Size of the test specimen shall be limited to 2.1 m (7 ft).

5.5.6 Conditioning.

5.5.6.1 Four trees shall be preconditioned indoors at 21°C \pm 3°C (70°F \pm 5°F) and at a relative humidity of 50 percent \pm 5 percent and shall remain in the conditioning area for at least 2 weeks, but not more than 4 weeks, until ready to receive the fire-retardant treatment.

5.5.6.2* During the preconditioning period outlined in 5.5.6.1, the trees shall be well-watered.

5.5.6.3 Following the preconditioning, the fire-retardant treatment shall be applied to two trees at the manufacturer's application rate and in accordance with the manufacturer's application instructions, while the other two trees shall remain untreated.

5.5.6.4 All four trees shall then be conditioned again indoors at 21°C \pm 3°C (70°F \pm 5°F) and at a relative humidity of 20 percent \pm 5 percent and shall remain in the conditioning area for at least 14 days, but not more than 17 days, until ready for test.

5.5.6.5 During the conditioning period outlined in 5.5.6.4, the trees shall not be watered.

5.5.6.6 No additional treatments shall be made, including cutting of the trunk.

5.6 Other Individual Fuel Packages.

5.6.1 For individual fuel packages other than those described in 5.1.2 through 5.1.4, the individual fuel package shall be centrally positioned on a protective barrier covering a load cell as described in Section 7.5. When tests are conducted for the purpose of forensic fire reconstruction, or research, the use of a weighing platform shall not be required.

5.6.2 The load cell shall be located centrally under the collection hood.

5.6.3 The ignition source shall be placed on the protective barrier (*see 5.1.3*) and in contact with the individual fuel package or located to optimize ignition and fire growth of the individual fuel package, except as discussed in 4.1.8.

Chapter 6 Environmental Conditions

6.1* Conditioning. Prior to testing, the individual fuel package shall be conditioned to equilibrium in an atmosphere at a temperature of 21°C \pm 3°C (70°F \pm 5°F) and a relative humidity of 50 percent \pm 5 percent.

6.1.1 Equilibrium shall be considered to be reached when the individual fuel package has achieved constant mass.

6.1.2 Constant mass shall be considered to be reached when two successive weighing operations, carried out at an interval of 24 hours, do not differ by more than 0.1 percent of the mass of

the individual fuel package or by more than 0.1 g (0.0035 oz), whichever is greater.

6.1.3 The individual fuel package shall be tested within 30 minutes of removal from the conditioning room.

6.1.4 The time between removal from the conditioning room and start of testing shall be reported.

6.1.5 When tests are conducted for the purpose of forensic fire reconstruction, or research, alternate sample conditioning shall be permitted.

6.2 Fire Test Area Environment.

6.2.1 The test building in which the fire test area is located shall have vents for the discharge of combustion products and shall have provisions for fresh air intake so that no oxygen-deficient air is introduced into the fire area during the test.

6.2.1.1 Prior to the start of the test, the ambient air at the mid-height entrance to the fire test area shall have a velocity of less than 0.5 m/sec (100 ft/min) in any direction, as measured at a horizontal distance of $1\text{ m} \pm 0.1\text{ m}$ ($3.3\text{ ft} \pm 0.3\text{ ft}$) from the center of the hood.

6.2.1.2 The building shall be of adequate size so that smoke shall not accumulate in the building below the level of the top of the fire test area.

6.2.2 The fire test area shall be the area under the hood.

6.2.3 The ambient temperature in the test building at locations around the fire test area shall be in the range of $20^{\circ}\text{C} \pm 10^{\circ}\text{C}$ ($68^{\circ}\text{F} \pm 18^{\circ}\text{F}$), and the relative humidity shall be less than 75 percent for the duration of the test.

6.2.4 When tests are conducted for the purpose of forensic fire reconstruction, or research, alternate environmental conditions shall be permitted.

6.2.5* The surface of the protective barrier shall not be covered with materials that are able to alter the burning characteristics of material falling off the burning individual fuel package.

Chapter 7 Test Equipment and Instrumentation

7.1 Ignition Source.

7.1.1 The ignition source for the test shall be a gas burner with a nominal 305 mm × 305 mm (nominal 12 in. × 12 in.) porous top surface of a refractory material.

7.1.2 The porous material referenced in 7.1.1 shall be a minimum 102 mm (4 in.) layer of white Ottawa silica sand and shall be permitted to be used to provide the horizontal surface through which the gas is supplied, as shown in Figure 7.1.2.

7.1.3 The top surface of the burner through which the gas is applied shall be located horizontally 305 mm ± 50 mm (12 in. ± 2 in.) above the protective barrier (*see 5.1.3 and 7.5.2.1*).

7.1.4 The gas supply to the burner shall be propane of C.P. grade (99 percent purity) or having a net heat of combustion of 46.5 MJ/kg ± 0.5 MJ/kg.

7.1.4.1 Flow rates of gas shall be calculated using a net heat of combustion of propane of 85 MJ/m³ (2280 Btu/ft³) at standard

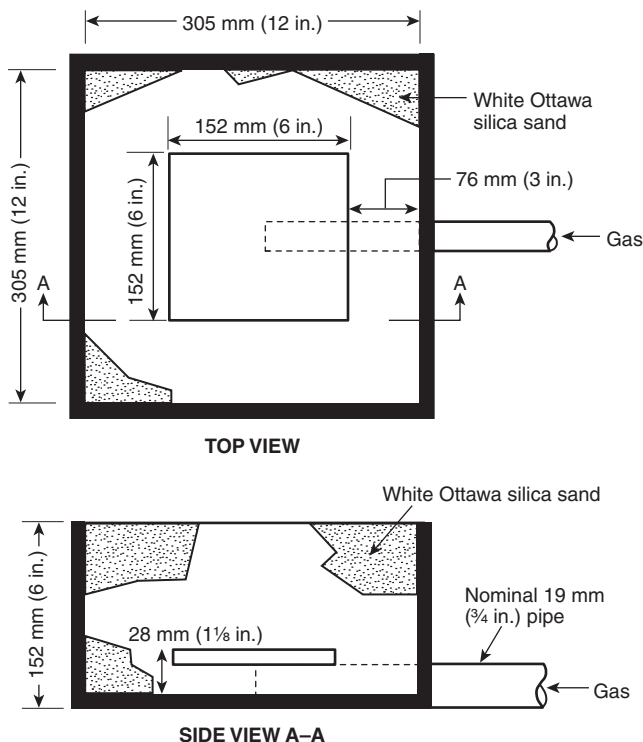


FIGURE 7.1.2 Gas Burner Using White Ottawa Silica Sand as Refractory Surface.

conditions of 101 kPa (14.7 psi) pressure and 20°C (68°F) temperature.

7.1.4.2 The gas flow rate shall be metered throughout the test, with an accuracy of at least ±5 percent.

7.1.4.3 The heat output to the burner shall be controlled within ±5 percent of the prescribed value.

7.1.5 The gas supply to the burner shall produce a net heat output of any of the following for a total of 15 minutes:

- (1) 20 kW
- (2) 40 kW
- (3) 70 kW
- (4) 100 kW
- (5) 160 kW
- (6) 300 kW

7.1.6 Burner controls shall be provided for automatic shutoff of the gas supply if flameout occurs.

7.1.7 The burner shall be ignited by a pilot burner or a remotely controlled spark igniter.

7.1.8 When tests are conducted for the purposes of forensic fire reconstruction, or research, an alternate ignition source shall be permitted to be used, as permitted by 4.1.8.

7.2* Fire Test Documentation.

7.2.1 The equipment described in 7.2.2 shall be used for recording visual information regarding this test.

7.2.2* Photographic Equipment. Video and photographic equipment shall be used to record the spread of fire and generation of smoke in the fire test area during the fire test.

7.2.2.1* The test sample shall be illuminated so that the entire sample is visible for video and still photography.

7.2.2.2 Video Recording. A video camera with a manually adjustable iris, adjusted to prevent automatic closing of the iris opening due to brightness of the fire (at least 50 percent open), shall be used.

7.2.2.2.1 A video monitor shall be used to determine when adjustments and compensation for the brightness of the ignition flames are needed.

7.2.2.2.2 The camera angle and magnification shall be adjusted until the entire test area is in full view.

7.2.2.2.3 A timer shall be included in all videos showing the elapsed time throughout the test.

7.2.2.2.4 The date and laboratory test report identification number shall be included as part of the video recording. The video recording shall be started at least 30 seconds prior to the ignition of the burner, and shall be continuous for the duration of the test period.

7.2.2.3 Photographic Documentation. A photographic record (still pictures) of the test shall be made in accordance with 7.2.2.3.1 and 7.2.2.3.2 as well as with either 7.2.2.3.3 or 7.2.2.3.4.

7.2.2.3.1 All photographs shall include a time stamp.

7.2.2.3.2 The date and laboratory test report identification number shall be included as part of the photographic record.

7.2.2.3.3 Color photographs shall be taken to record any special events and also at intervals not exceeding 15 seconds for the first 3 minutes of any test and at intervals not exceeding 60 seconds thereafter, for the duration of the test.

7.2.2.3.4 When the test is conducted for forensic fire reconstruction, or research, the requirements of 7.2.2.3.3 shall not apply.

7.3 Canopy Hood and Exhaust Duct.

7.3.1 A hood shall be positioned directly above the test area.

7.3.1.1 The bottom of the hood shall not be lower than the top of any individual fuel package.

7.3.1.2 The face dimensions of the hood shall be at least 2.44 m × 2.44 m (8 ft × 8 ft), and the depth shall be 1.1 m ± 0.1 m (3.5 ft ± 4 in.).

7.3.1.3 The hood shall feed into a plenum that has a 0.92 m ± 0.1 m × 0.92 m ± 0.1 m (3 ft ± 4 in. × 3 ft ± 4 in.) cross-section.

7.3.1.4 The plenum shall have a minimum height of 0.92 m (3 ft).

7.3.1.5 The height of the plenum shall be permitted to be increased to a maximum of 1.8 m (5 ft 11 in.) to satisfy building constraints.

7.3.1.6 The exhaust duct connected to the plenum shall be horizontal and at least 406 mm (16 in.) in diameter, and it shall be permitted to have a circular aperture of at least 305 mm (12 in.) at its entrance or at mixing vanes in the duct.

7.3.2* The hood shall have the capability to collect all the combustion products leaving the fire test area.

7.3.3 An alternative exhaust system design shall be permitted to be used if it has been shown to produce equivalent results.

7.3.4 The alternative draft system shall have demonstrated equivalency by meeting the calibration requirements outlined in Chapter 8.

7.4 Instrumentation in Exhaust Duct.

7.4.1 Exhaust Collection System. The exhaust collection system shall be constructed with at least the following components:

- (1) Blower
- (2) Steel hood
- (3) Duct
- (4) Velocity probe
- (5) Thermocouple(s)
- (6) Oxygen measurement system
- (7) Smoke obscuration measurement system (white light photocell lamp/detector or laser)
- (8) Combustion gas sampling and analysis system

7.4.2* Velocity Measurement.

7.4.2.1 General.

7.4.2.1.1 A bidirectional probe or an equivalent measuring system shall be used to measure gas velocity in the duct.

7.4.2.1.2 A typical probe shall consist of a stainless steel cylinder that is 44 mm ± 1 mm (1.75 in. ± 0.040 in.) long and 22 mm ± 1 mm (0.875 in. ± 0.040 in.) inside diameter with a solid diaphragm in the center.

7.4.2.1.3 The pressure taps on either side of the diaphragm shall support the probe.

7.4.2.1.4 The axis of the probe shall run along the centerline of the duct 3.35 m ± 0.1 m (11 ft ± 4 in.) (or at least 8 duct diameters for larger-diameter ducts) downstream from the entrance.

7.4.2.1.5 Alternative probe locations shall be permitted to be used if the locations have been shown to produce equivalent results.

7.4.2.1.6 Alternative velocity probe locations shall have demonstrated equivalency by meeting the calibration requirements outlined in Chapter 8.

7.4.2.2* Pressure Transducer.

7.4.2.2.1 The taps shall be connected to a pressure transducer that is able to resolve pressure differences of 0.25 Pa (0.001 in. H₂O).

7.4.2.2.2 The response time to a stepwise change of the duct flow rate shall not exceed 5 seconds to reach 90 percent of the final value.

7.4.2.3 Thermocouples.

7.4.2.3.1 One pair of thermocouples shall be placed 3.40 m ± 0.1 m (11 ft 2 in. ± 4 in.) (or at least 8 duct diameters for larger-diameter ducts) downstream from the entrance to the horizontal duct and 50 mm ± 5 mm (2.0 in. ± 0.2 in.) downstream from the axis of the probe.

7.4.2.3.2 The pair of thermocouples shall straddle the center of the duct and be separated from each other by 50 mm ± 5 mm (2 in. ± 0.2 in.).

7.4.2.3.3 Alternative thermocouple locations shall be permitted to be used if the locations have been shown to produce equivalent results.

7.4.2.3.4 Alternative thermocouple locations shall have demonstrated equivalency by meeting the calibration requirements outlined in Chapter 8.

7.4.3* Sampling Line.

7.4.3.1 General.

7.4.3.1.1 The sampling line tubes shall be constructed of a material not influencing the concentration of the combustion gas species to be analyzed.

7.4.3.1.2 The following sequence of the gas train shall be used:

- (1) Sampling probe
- (2) Soot filter
- (3) Cold trap
- (4) Gas path pump
- (5) Vent valve
- (6) Plastic drying column and carbon dioxide removal columns (if used)
- (7) Flow controller
- (8) Oxygen analyzer

7.4.3.1.3 The gas train shall also include appropriate spanning and zeroing facilities.

7.4.3.2* The cold trap, or cooling column, in the gas train shall be used to remove water from the combustion gases.

7.4.3.3* For each gas analyzer used, the system delay time (or time shift) for the analyzer to reach a 90 percent response to a step change in the gas concentration shall be determined before testing.

7.4.4 Oxygen Concentration. See Annex B.

7.4.4.1 A gas sampling tube shall be located $3.5 \text{ m} \pm 0.1 \text{ m}$ ($11.5 \text{ ft} \pm 4 \text{ in.}$) (or at least 8 duct diameters for larger-diameter ducts) downstream from the entrance of the duct at the geometric center of the duct [to within 10 mm (0.4 in.) of the center] and $150 \text{ mm} \pm 5 \text{ mm}$ ($6 \text{ in.} \pm 0.2 \text{ in.}$) downstream from the axis of the probe.

7.4.4.1.1 This gas sampling tube shall be used to obtain a continuously flowing sample for determining the oxygen concentration of the exhaust gas as a function of time.

7.4.4.1.2 A suitable filter and cold trap shall be placed in the line ahead of the analyzer to remove particulates and water.

7.4.4.1.3 Alternative probe locations shall be permitted to be used if the locations have been shown to produce equivalent results.

7.4.4.1.4 Alternative probe locations shall have demonstrated equivalency by meeting the calibration requirements outlined in Chapter 8.

7.4.4.2 The oxygen analyzer shall be of the paramagnetic or polarographic type and shall be capable of measuring oxygen concentration in a range of 21 percent to 15 percent, with a relative accuracy of 100 ppm in this concentration range.

7.4.4.2.1 The signal from the oxygen analyzer shall be within 5 percent of its final value and occur within 30 seconds of intro-

ducing a step change in composition of the gas stream at the inlet to the sampling tube.

7.4.4.2.2 The oxygen analyzer shall include an absolute pressure transducer for gas pressure variations.

7.4.4.2.3 A rotameter shall be on the outlet of the oxygen analyzer.

7.4.5 Carbon Dioxide Concentration.

7.4.5.1 The gas sampling tube described in 7.4.4.1 or an alternative tube at the same location, or located as described in 7.4.4.1.3 and 7.4.4.1.4, shall be used to provide a continuous sample for measuring the carbon dioxide concentration, using an analyzer with a range of 0 to 10 percent and a maximum relative error of 2 percent of full scale.

7.4.5.2 After introducing a step change in composition of the gas stream at the inlet to the sampling tube, the total system response time between the sampling inlet and the meter shall be no longer than 30 seconds to reach a value within 5 percent of the final value.

7.4.6 Carbon Monoxide Concentration.

7.4.6.1 The gas sampling tube described in 7.4.4.1 or an alternative tube at the same location or located as described in 7.4.4.1.3 and 7.4.4.1.4 shall be used to provide a continuous sample for measuring the carbon monoxide concentration, using an analyzer with a range of 0 to 1 percent and a maximum relative error of 2 percent of full scale.

7.4.6.2 After introducing a step change in composition of the gas stream at the inlet to the sampling tube, the total system response time between the sampling inlet and the meter shall be no longer than 30 seconds to reach a value within 5 percent of the final value.

7.4.7 Smoke Obscuration.

7.4.7.1* An optical system shall be installed for determining smoke obscuration by measuring light obscuration across the centerline of the exhaust duct.

7.4.7.2 The optical density of the smoke shall be determined by measuring the light transmitted with a photometer system consisting of a laser system or a white light source with a photo-cell/detector.

7.4.7.3 The light beam used to measure light transmission shall be horizontal.

7.4.7.4* A white light system shall consist of a lamp, lenses, an aperture, and a photocell.

7.4.7.5 The white light system shall be constructed so that soot deposits on the optics during a test do not reduce the light transmission by more than 5 percent.

7.4.7.6* The laser system shall consist of a helium-neon laser, silicon photodiodes as main beam and reference detectors, and electronics to derive an extinction and to set a zero reading.

7.4.7.6.1 The system shall be designed for split yoke mounting in two pieces that are rigidly coupled together but resiliently attached to the exhaust duct by means of refractory gasketing.

7.4.7.6.2 A 0.5 mW to 2.0 mW helium-neon laser beam shall be projected horizontally across the exhaust duct.

7.4.7.6.3 An alternative split yoke mounting system for the laser system shall be permitted.

7.4.7.6.4 When tests are conducted for the purpose of forensic fire reconstruction, or research, the use of smoke obscuration instrumentation shall not be required.

7.5 Load Cell.

7.5.1 The mass loss rate of the burning individual fuel package shall be measured during the test by means of a load cell in accordance with 7.5.2 through 7.5.5.

7.5.2 The individual fuel package shall be placed on a load cell covered by a protective barrier.

7.5.2.1 The protective barrier shall consist of reinforced inorganic board having dimensions not less than $1.2 \text{ m} \pm 0.1 \text{ m} \times 2.4 \text{ m} \pm 0.1 \text{ m}$ ($3.9 \text{ ft} \pm 0.32 \text{ ft} \times 7.87 \text{ ft} \pm 0.32 \text{ ft}$) and shall be located on top of the load cell.

7.5.2.2 The protective barrier perimeter shall have a rim with a height of $100 \text{ mm} \pm 10 \text{ mm}$ ($4 \text{ in.} \pm 0.4 \text{ in.}$).

7.5.3 The load cell shall be capable of measuring mass with an accuracy of not less than 0.1 percent.

7.5.3.1 The load cell and protective barrier shall be installed in such a way that the heat from the burning individual fuel package and any eccentricity of the load do not affect the accuracy of the load cell.

7.5.3.2 All parts of the load cell shall be located below the top level of the protective barrier.

7.5.4 The protective barrier shall support the base of the individual fuel package at a height of $127 \text{ mm} \pm 76 \text{ mm}$ ($5 \text{ in.} \pm 3 \text{ in.}$) above the floor.

7.5.5 The protective barrier shall be located beneath the hood at its geometric center.

7.5.6 When tests are conducted for the purpose of forensic fire reconstruction, or research, the use of a load cell shall not be required.

Chapter 8 Calibration

8.1 Calibration and Documentation of Ignition Source and Test Equipment.

8.1.1 Instruments.

8.1.1.1 All instruments shall be calibrated with standard sources after initial installation.

8.1.1.2 The instruments to be calibrated shall be smoke meters, flow or velocity transducers, and gas analyzers.

8.1.2 A calibration test shall have been performed prior to and within 30 days of any fire test.

8.1.2.1 Such calibration tests shall be performed no more than 30 days prior to any fire test.

8.1.2.2* If modifications are made to the system since the last calibration, a recalibration test shall be performed before any fire test.

8.1.2.3 The calibration test shall use the standard ignition source from 7.1.1, centered under the exhaust hood.

8.1.2.4 When the instrumentation is intended to be calibrated to fire sizes greater than 300 kW, the use of an alternate calibration burner and or fuel shall be permitted.

8.1.2.4.1 The calibration burner shall be centered under the exhaust hood.

8.1.2.4.2 The maximum flame height during calibration shall not exceed the height of the exhaust duct entrance.

8.1.2.4.3 Fire sizes of 33 percent, 66 percent, and 100 percent of the maximum heat release rate to be expected in the test shall be used as calibration input.

8.1.2.4.4 When an alternate fuel is used, the fuel constants listed in 8.2.2.2 for the alternate fuel shall be reported.

8.1.3* The data resulting from a calibration test shall provide the output as a function of time, after the burner is ignited, of all instruments used.

8.1.4 The results in 8.1.3 shall be used to determine the calibration factor, C , in Section 8.2.

8.2* Calibration Procedure. The calibration procedure for heat release measurements shall be conducted in accordance with this section.

8.2.1* Propane shall be burned, as described in 7.1.4, for 15 minutes at an incident heat release rate of 50 kW, 100 kW, and 150 kW. Measurements shall be taken at least once every 6 seconds.

8.2.1.1 The response of the system to a stepwise change of the heat output from the burner shall be a maximum of 12 seconds to 90 percent of final value.

8.2.1.2 The following values shall be used for the combustion expansion factor, α ; for energy, E ; and for heat of combustion, Ht_{comb} : $\alpha = 1.084$, $E = 12.8 \text{ MJ/kg}$, and effective $Ht_{comb} = 44.2 \text{ MJ/kg}$. (*The symbols are described in Section 1.3.*)

8.2.2 The total heat released and the corrected calibration factor, C_{cor} , shall be calculated so that the total heat released, as determined by the oxygen consumption calculation, agrees with the theoretical value, obtained from measurement of the volumetric flow rate and weight loss of the fuel, to within 5 percent, by using the following equation:

[8.2.2]

$$C_{cor} = \frac{(Ht_{comb} \times F_{mb})}{\int \dot{q}(MW) dt}$$

8.2.2.1 An alternative method shall be permitted to calculate the calibration factor, as described in 8.2.2.2 and 8.2.2.3.

8.2.2.2 Following completion of a calibration test, the average heat release rate shall be calculated for the burner output at each set point. The corresponding average heat release rate shall be calculated for each point based on the oxygen consumption measurements. A linear, least squares regression shall be performed on this data set, using the burner averages as the dependent (Y) variable. The slope of this line shall be used as the calibration factor.

8.2.2.3 The r-squared correlation coefficient of the least squares regression shall not be less than 0.90.

8.2.3 The total heat release, as determined by the oxygen consumption calculation, shall agree with the theoretical value, obtained from measurement of the volumetric flow rate and weight loss of the fuel, to within 5 percent.

8.2.4 The corrected value of calibration factor shall be used for all tests.

8.2.5 If the calibration factor does not agree within ± 5 percent with the value determined during the previous calibration, the system shall be checked for leaks or other problems before proceeding with the test.

8.2.6 The problem shall be corrected, and a new calibration shall be performed in accordance with this chapter.

8.3 Smoke Measurement Calibration. The smoke measuring system shall be calibrated initially by using two neutral density filters of significantly different values and one at 100 percent transmission.

8.3.1 Once this calibration is set, at least the zero value of extinction coefficient (100 percent transmission) shall be verified each day prior to testing.

8.3.2 If departure from the zero line is found at the end of a calibration test, the problem shall be corrected and a new calibration shall be performed in accordance with this chapter.

8.4* Gas Analyzer Calibration. Gas analyzers shall be calibrated daily, prior to testing, using the manufacturer's instructions.

Chapter 9 Test Procedure

9.1 Procedure.

9.1.1 An initial volumetric flow rate of at least 0.71 m³/sec (1000 ft³/min) shall be established through the duct, and the volume flow rate shall be increased as required to keep the oxygen content above 14 percent and to capture all effluents from the fire test.

9.1.2 All sampling and recording devices shall be turned on, and steady-state baseline readings shall be established for at least 2 minutes prior to burner ignition.

9.1.3 The ignition source shall be ignited.

9.1.3.1 The clock shall be started once initiation of the ignition source has occurred.

9.1.3.1.1 If the burner specified in Section 7.1 is used, the gas flow rate shall be increased to provide a burner rate of heat release equal to the heat output as selected from one of the six power levels specified in 7.1.5.

9.1.3.1.2 The burner output shall be one of the following for 15 minutes with a heat output controlled to within ± 5 percent of the prescribed value:

- (1) 20 kW
- (2) 40 kW
- (3) 70 kW
- (4) 100 kW
- (5) 160 kW
- (6) 300 kW

9.1.3.1.3 The exposure shall be continued at that same level for the duration of the test.

9.1.3.2 If an alternate ignition source or heat output is used, the test specimen shall be exposed to the ignition source as required by the detailed description of the ignition source used.

9.1.3.3 If an alternate ignition source or heat output is used, the test shall continue until all visible flaming of the test specimen has ceased or for a minimum period of 15 minutes except as provided in 9.1.6.

9.1.4 Color photographs and video recordings shall be taken as indicated in Section 7.2.

9.1.5 A spoken or written record of the fire shall be provided that gives the times of all significant events, such as, but not limited to, times of ignition.

9.1.6 The test shall be permitted to be terminated whenever safety conditions dictate.

9.1.7 Data acquisition shall continue for a minimum of 2 minutes after the test has been terminated.

9.1.8 Damage shall be documented after the test, using words, photographs, video, or drawings.

Chapter 10 Calculation Methods for Total Rate of Heat Release

10.1* Mass Flow Rate.

10.1.1 The mass flow rate through the exhaust duct shall be obtained from the velocity measured in the duct. The mass flow rate shall be calculated using the results found in Section 7.1 and Equation 10.1.2.

10.1.2 The mass flow rate shall be obtained through the duct from the velocity measured with a bidirectional probe at one point in the duct. The mass flow rate shall be calculated using the following equation:

[10.1.2]

$$\dot{m}_e = C \sqrt{\frac{\Delta P}{T_e}}$$

10.1.3 The mass flow rate shall be monitored by using Equation 10.1.2. (See symbol description in Section 1.3.)

10.1.4* Concentration measurements of O₂, CO₂, and CO shall be used.

10.1.5 The mass flow rate shall be calculated according to Equation 10.1.2, and the oxygen depletion factor shall be calculated as follows:

[10.1.5]

$$\phi = \frac{X_{O_2}^0 (1 - X_{CO_2} - X_{CO}) - X_{O_2} (1 - X_{CO_2}^0)}{X_{O_2}^0 (1 - X_{O_2} - X_{CO_2} - X_{CO})}$$

10.1.6 The rate of heat release shall be calculated as follows:

[10.1.6]

$$\dot{q} = \left[E\phi - (E_{\text{CO}} - E) \left(\frac{1-\phi}{2} \right) \left(\frac{X_{\text{CO}}}{X_{\text{O}_2}} \right) \right] \left(\frac{M_{\text{O}_2}}{M_e} \right) \left(\frac{\dot{m}_e}{1+\phi(\alpha-1)} \right) X_{\text{O}_2}^0$$

10.1.7 The total heat release shall be calculated as follows:

[10.1.7]

$$THR = \int \dot{q} dt$$

10.2 Smoke Measurement Equations.

10.2.1 The extinction coefficient, k , shall be calculated as follows:

[10.2.1]

$$k = \frac{1}{L_p} \ln \left(\frac{I_0}{I} \right)$$

10.2.2 The optical density per unit light path length shall be calculated as follows:

[10.2.2]

$$OD = \frac{1}{D} \log \left(\frac{I_0}{I} \right)$$

10.2.3 The volumetric flow rate at the smoke meter shall be calculated as the product of the mass flow rate and the temperature at the measurement point (bidirectional probe), corrected by the density of air, at the standard temperature 273.15 K, and by the temperature, in K, as in the following equation:

[10.2.3]

$$\dot{V}_s = \dot{m}_e \left(\frac{T_e}{\rho_0 273.15} \right) = \frac{\dot{m}_e T_e}{353}$$

10.2.4 Rate of smoke release shall be defined as follows:

[10.2.4]

$$RSR = (\dot{V}_s k)$$

10.2.5 The total smoke released shall be defined as follows:

[10.2.5]

$$TSR = \int RSR \, dt$$

10.3 Release Rate of Combustion Gases.

10.3.1 The release rate of carbon monoxide shall be calculated as follows:

[10.3.1]

$$\dot{m}_{\text{CO}} = \frac{X_{\text{CO}} (1 - X_{\text{O}_2}^0 - X_{\text{CO}_2}^0)}{(1 - X_{\text{O}_2} - X_{\text{CO}_2} - X_{\text{CO}})} \frac{M_{\text{CO}}}{M_a} \frac{\dot{m}_e}{1 + \phi(\alpha - 1)}$$

10.3.2 For other combustion gases, the release rate shall be a function of the summation of the concentrations of that gas at each scan in the exhaust (i.e., the products of the mole fraction of the combustion gas, the overall mass flow rate for that scan, and the scan period), its molecular weight, and the total test period, as follows:

[10.3.2]

$$\dot{m}_x = \frac{\Sigma (X_{xi} \dot{m}_{ei} \Delta t_i) \left(\frac{M_x}{M_a} \right)}{\text{test period}}$$

10.3.3 An alternate procedure for calculating the release rate of gases, including carbon monoxide, shall be a function of the concentration of each gas species at each scan in the exhaust (i.e., the products of the mole fraction of the combustion gas, and the overall mass flow rate for that scan) and its molecular weight as follows:

[10.3.3]

$$\dot{m}_x = (X_{xi} - X_{xi}^0) \dot{m}_{ei} \left(\frac{M_x}{M_a} \right)$$

Chapter 11 Report

11.1 Report.

11.1.1 Description of Individual Fuel Packages. The report shall include the following:

- (1) Overall description of individual fuel package, along with identifying characteristics or labels
- (2) Name, thickness, density, and size of the materials used to make up the final package, along with other identifying characteristics or labels
- (3) Mounting of materials, including detailed description of mounting procedure and justification for any variations from end-use installation
- (4) Layout of individual fuel package and attachments, including appropriate drawings, in fire test area
- (5) Relative humidity and temperature of the fire test area and the test building prior to and during the test

- (6) Time between removal from the conditioning room and start of testing
- (7) Details of the conditioning used

11.1.2 Ignition Source. The report shall describe the ignition source used, its location with respect to the individual fuel package, its heat release rate, and the duration of the exposure.

11.1.3 Time History of the Rate of Heat Release of the Fire.

11.1.3.1 The rate of heat release shall be calculated from the measured oxygen, carbon monoxide, and carbon dioxide concentrations and the temperature and volumetric flow rate of the gas in the duct.

11.1.3.2 The time history of the rate of heat release as well as the maximum and average values shall be reported.

11.1.3.3 Similarly, the time history of total heat released as well as the final value and the values every 5 minutes shall be reported.

11.1.3.4 The measurement method used shall also be reported.

11.1.4 Time History of the Fire Growth.

11.1.4.1 The time history of the fire growth shall be a transcription of the visual, photographic, audio, and written records of the fire test.

11.1.4.2 The records shall indicate the time of ignition of the individual fuel package and the approximate location of the flame front most distant from the ignition source at intervals not exceeding 15 seconds during the fire test.

11.1.4.3 Still photographs and continuous video recording as required by Section 7.2 shall be supplied.

11.1.4.4 Drawings and photographs or video recording showing the extent of the damage of the individual fuel package after the test also shall be supplied.

11.1.5 Time History of Smoke Obscuration.

11.1.5.1 The smoke obscuration shall be described by means of the optical density, rate of smoke release, and total smoke released measured with the instrumentation in the exhaust duct.

11.1.5.2 The following shall be reported:

- (1) Time histories of smoke release rate, optical density, and volumetric duct flow rate as well as the maximum and average values
- (2) The total smoke release time history as well as the final value and the values every 5 minutes
- (3) Details of the smoke obscuration measurement equipment used, including the orientation of the light beam

11.1.6 Time History of Mass Lost by the Individual Fuel Package. The time history of the mass loss rate as well as the maximum and average values and the total mass lost (in kg and percentage) shall be reported.

11.2 Discussion of Performance. A description of individual fuel package performances shall be provided and shall include the following:

- (1) Flame spread on or within the individual fuel package during exposure

- (2) Presence of falling debris or burning droplets on the protective barrier that persist in burning for 30 seconds or more
- (3) Visibility information in the fire test area
- (4) Other pertinent details with respect to fire growth
- (5) Falling debris, melting or dripping of materials
- (6) Time to ignition of the optional paper target indicator and location if used

Annex A Explanatory Material

Annex A is not a part of the requirements of this NFPA document but is included for informational purposes only. This annex contains explanatory material, numbered to correspond with the applicable text paragraphs.

A.1.1.1 This standard is referenced, including requirements for a maximum heat release rate of 100 kW, in several codes where specific individual fuel packages are exposed to a 20 kW ignition source. The applications include foam plastics in signs (NFPA 101 and NFPA 5000), foam plastic displays (NFPA 101 and the *International Fire Code*), artificial decorative vegetation (*International Fire Code*), foam components of children's play-ground structures (NFPA 1 and the *International Building Code*), foam plastics in kiosks (NFPA 101 and *International Building Code*) and decorative materials (including curtains and drapes) (*International Fire Code*).

A.1.1.4(1) This includes natural and artificial combustible vegetation.

A.1.1.5 The heat release of these products can be tested using existing standard tests:

- (1) Seating furniture can be tested using ASTM E1537, *Standard Test Method for Fire Testing of Upholstered Furniture*, or California Technical Bulletin TB 133.
- (2) Mattresses can be tested using ASTM E1590, *Standard Test Method for Fire Testing of Mattresses*.
- (3) Stacked chairs can be tested using ASTM E1822, *Standard Test Method for Fire Testing of Stacked Chairs*.
- (4) Interior finish can be tested using NFPA 286, *Standard Methods of Fire Tests for Evaluating Contribution of Wall and Ceiling Interior Finish to Room Fire Growth*.
- (5) Textile wall coverings can be tested using NFPA 265, *Standard Methods of Fire Tests for Evaluating Room Fire Growth Contribution of Textile or Expanded Vinyl Wall Coverings on Full Height Panels and Walls*.
- (6) Mattress sets (bed sets) can be tested using 16 CFR 1633.

A.1.2.3 If an individual fuel package is exposed to a different environment, as in an actual fire, it is possible that the performance of the individual fuel package will be different.

A.3.2.1 Approved. The National Fire Protection Association does not approve, inspect, or certify any installations, procedures, equipment, or materials; nor does it approve or evaluate testing laboratories. In determining the acceptability of installations, procedures, equipment, or materials, the authority having jurisdiction may base acceptance on compliance with NFPA or other appropriate standards. In the absence of such standards, said authority may require evidence of proper installation, procedure, or use. The authority having jurisdiction may also refer to the listings or labeling practices of an organization that is concerned with product evaluations and is thus in a position to determine compliance with appropriate standards for the current production of listed items.

A.3.2.2 Authority Having Jurisdiction (AHJ). The phrase “authority having jurisdiction,” or its acronym AHJ, is used in NFPA documents in a broad manner, since jurisdictions and approval agencies vary, as do their responsibilities. Where public safety is primary, the authority having jurisdiction may be a federal, state, local, or other regional department or individual such as a fire chief; fire marshal; chief of a fire prevention bureau, labor department, or health department; building official; electrical inspector; or others having statutory authority. For insurance purposes, an insurance inspection department, rating bureau, or other insurance company representative may be the authority having jurisdiction. In many circumstances, the property owner or his or her designated agent assumes the role of the authority having jurisdiction; at government installations, the commanding officer or departmental official may be the authority having jurisdiction.

A.3.2.3 Listed. The means for identifying listed equipment may vary for each organization concerned with product evaluation; some organizations do not recognize equipment as listed unless it is also labeled. The authority having jurisdiction should utilize the system employed by the listing organization to identify a listed product.

A.3.3.5 Heating Flux. In this test method, the burning of the test specimen can generate additional heat flux to the specimen surface during the test.

A.3.3.6 Initial Test Heat Flux. The initial test heat flux in this test method is imposed externally from a radiant heater on the specimen surface.

A.4.1.1 UL 1975, *Standard for Fire Tests for Foamed Plastics Used for Decorative Purposes*, includes procedures for sample preparation of the following types of products, when they contain foamed plastics used for decorative purposes:

- (1) Individual manufactured decorative objects such as, but not limited to, mannequins, murals, and signs
- (2) Open-ceiling portable exhibit booth constructions incorporating manufactured panels containing foam plastics
- (3) Theater, motion picture, and television stage settings with or without horizontal projections

In UL 1975, such products are tested to assess their ability to resist rapid heat release when subjected to a flaming ignition source: a 340 g wood crib. Codes often include requirements for peak heat release rates of such products based on the use of UL 1975.

A.4.1.2 Decorative objects can include irregular-shaped objects such as combustible vegetation (natural or artificial).

A.4.1.7.1 The six basic ignition sources chosen correspond to the following concepts:

- (1) A 20 kW ignition source is similar to the peak heat release rate of the wood crib ignition source used in UL 1975, *Standard for Fire Tests for Foamed Plastics Used for Decorative Purposes*.
- (2) A 40 kW ignition source can be used as a more severe approach to testing the same products otherwise tested using the 20 kW ignition source if additional fire safety is required. Moreover, a 40 kW ignition source also corresponds to the heat output from a small wastebasket fire. Finally, a 40 kW ignition source is also the minimum ignition source used for testing of interior finish materials with NFPA 286.

- (3) A 70 kW ignition source offers an intermediate range between the 40 kW and 100 kW ignition sources.
- (4) A 100 kW source is the lower ignition source used for testing of interior finish materials with either ASTM E2257, *Standard Test Method for Room Fire Test of Wall and Ceiling Materials or Assemblies*, or ISO 9705, *Fire tests — Full-scale room fire tests for surface products*. It is used to initially differentiate interior finish materials on their likelihood of leading to flashover.
- (5) A 160 kW ignition source is the higher ignition source used for testing of interior finish materials with NFPA 286. It is used to assess whether such interior finish materials are likely to lead to flashover.
- (6) A 300 kW ignition source is the higher ignition source used for testing of interior finish materials with either ASTM E2257 or ISO 9705. It is used to differentiate interior finish materials with very low levels of heat release and very low likelihood of leading to flashover.

A series of ad hoc tests was also conducted with the gas burner located at 1.2 m from the floor and 1.2 m below the bottom of the hood (with the top of the hood at 3.0 m from the floor), which showed the approximate flow rates and flame heights associated with each ignition source. The results are shown in Table A.4.1.7.1.

A.4.1.7.2 Each individual fuel package should be tested using at least one of the ignition sources specified in 4.1.7.

Theater, motion picture, and television stage settings; portable exhibit booths; and other single decorative objects constructed of foamed plastics should be tested with an ignition source of 20 kW.

A.5.1.7 When the fire tests of decorative objects are used for research purposes, a different ignition source or power level might be appropriate.

A.5.2.1 This should create a 4.5 m² (48 ft²) floor area.

A.5.2.3 When the fire tests of exhibit booths are used for research purposes, a different ignition source or power level might be appropriate.

A.5.3.5 When the fire tests of theater, motion picture, and television stage settings are used for research purposes, a different ignition source or power level might be appropriate.

Table A.4.1.7.1 Approximate Flow Rates and Flame Heights for Various Heat Release Rates (HRR)

HRR (kW)	Flow Rate (L/sec)	Flame Height (mm)
20	16.5	380
40	30.7	610
60	47.2	815
70	54.8	920
100	77.9	1120
160	122.7	1525
300	226.5	2085

A.5.4 An alternate test method that has been used for the testing and certification of artificial Christmas trees is UL Subject 2358, *Outline of Investigation for Fire Tests of Pre-Lit Artificial Seasonal Use Trees and Other Seasonal Decorative Items*. The ignition fire source exposure represents a 5-minute growth-and-decay fire challenge that peaks at 20 kW. The conditions of acceptance are as follows:

- (1) Peak heat release rate does not exceed 100 kW.
- (2) Total heat release rate does not exceed 15 MJ during the first 10 minutes of the test.
- (3) The sample does not lose structural integrity such as tipping, falling, or loss of branches during the test.

A.5.5.6.2 Water should be checked daily and water added as needed, but not less frequently than every 72 hours.

A.6.1 For products in which vaporization of solvents occurs, such as those using adhesives or products containing wood, a conditioning time of 4 weeks is common.

A.6.2.5 It has been shown that if the floor is covered with sand, this rapidly extinguishes burning sections of material. If the material is extinguished, the measured heat release is lower than it would have been if the material had continued burning, thus altering the expected results.

A.7.2 NFPA 286; ASTM E2067, *Standard Practice for Full-Scale Oxygen Consumption Calorimetry Tests*; and ASTM E603, *Standard Guide for Room Fire Experiments*, contain the rationale for the instrumentation used and its location.

A.7.2.2 Any floodlights used for photography should not raise the ambient temperature in the area surrounding the fire test area above what is specified, namely 30°C (86°F).

A.7.2.2.1 A nominal 300 W flood-type, quartz halogen lamp positioned near the floor level and aimed at a level above the burner provides adequate illumination.

A.7.3.2 Experience suggests that a draft capable of moving up to 2.5 m³/sec (5150 standard ft³/min), which is equivalent to 5.7 m³/sec (11,800 ft³/min) at 400°C (752°F), during the test is sufficient for fires up to flashover.

A.7.4.2 A bidirectional probe is preferable to a pitot-static tube for measuring velocity in the exhaust duct in order to avoid problems of clogging with soot.

A.7.4.2.2 Capacitance transducers have been found to be most stable for this application.

A.7.4.3 Stainless steel sampling lines have been shown to be satisfactory.

A.7.4.3.2 The recommended approach to designing a cooling (and drying) column (to remove water from the combustion gases) is to use a refrigerated column and separation chamber fitted with a drain plug from which the collected water is removed from time to time. Alternative approaches or devices that are shown to give equivalent results are also acceptable. It is very important to remove water from the combustion stream before it reaches the oxygen, carbon monoxide, and carbon dioxide analyzers.

A.7.4.3.3 Combustion gas concentration measurements require the use of appropriate time shifts in order to account for the time required for gas analyzer response and for combustion gas transit time within the sampling system.

A.7.4.7.1 White light and laser systems have been shown to give similar results. See the following publications for more information:

- (1) "Comparison of Smoke Release from Building Products," by B. Ostman
- (2) "Rate of Heat Release Testing for Vinyl Wire and Cable Materials with Reduced Flammability and Smoke: Small Scale and Full Scale Tests," by A. W. Coaker, M. M. Hirschler, and C. L. Shoemaker

Some research has shown differences between white light and laser measurements in one application. See "Optical Measurement of Smoke," by W. K. Chow and K. F. Lai.

A.7.4.7.4 The following information is being provided for informational purposes only and has not been independently verified, certified, or endorsed by the NFPA or any of its technical committees. The following describes an example of a white light measuring system that has been found to be satisfactory:

- (1) Lenses. Plano convex: diameter 40 mm, focal length 50 mm
- (2) Lamp. Osram Halo Stars: 64410C6 V, 10 W or equivalent
- (3) Photocell. United Detector Technology: PIN 10 AP or equivalent
- (4) Power supply. Gresham Lion Ltd: Model G x012 or equivalent

A.7.4.7.6 The following information is being provided for informational purposes only and has not been independently verified, certified, or endorsed by the NFPA or any of its technical committees. The following describes an example of a laser measuring system that has been found to be satisfactory:

- (1) Helium-neon laser. Aerotech OEM-05P or equivalent
- (2) Laser power supply. Aerotech LSS-05 or equivalent
- (3) Photocells. Hamamatsu S1336-44BK or equivalent

A.8.1.2.2 A recalibration test need not necessarily be performed following minor modifications that are unlikely to affect test results.

A.8.1.3 Measurement of the temperature and velocity profiles across the duct cross-section at the location of the bidirectional probe and of the differential pressure across the bidirectional probe is not needed when the calibration factor, *C*, is used as described in Section 8.2.

A.8.2 The estimated calibration factor is likely to be within 20 percent of the correct value.

A.8.2.1 Effective heat of combustion from propane is 44.2 MJ/kg, which is calculated at a combustion efficiency of 95 percent for propane, which is 46.5 MJ/kg.

A.8.4 ASTM E800, *Standard Guide for Measurement of Gases Present or Generated During Fires*, gives guidance on the calibration of gas analyzers.

A.10.1 Further information can also be found in "Measuring Rate of Heat Release by Oxygen Consumption," by M. L. Janssens and in "Oxygen Consumption Calorimetry," by M. L. Janssens and W. J. Parker.

The mass flow rate is usually placed along the centerline of the duct. The velocity profile is obtained by measuring velocity at a sufficient number of representative points over the diameter or cross-section of the duct prior to any fire tests. Detailed procedures for obtaining this profile are described in *The Meas-*

urement of Air Flow, by E. Ower and R. Pankhurst. Usually, conditions in full-scale fire tests are such that the flow in the duct is turbulent, resulting in a shape factor kc (ratio of the average velocity to the velocity along the centerline) that is close to 1.

Due to considerable soot production in many fires, pitot-static tubes are generally not useful because of the potential for the holes to become clogged. In response to this problem, B. J. McCaffrey and G. Heskestad ("A Robust Bidirectional Low-Velocity Probe for Flame and Fire Application") designed the bidirectional probe described in 7.4.2. This system involves measuring the differential pressure across the probe and the centerline velocity.

A.10.1.4 Water vapor has to be removed before the sample air is introduced into the oxygen analyzer. A water trap and desiccant can be used to remove water.

Annex B Method of Determining Suitability of Oxygen Analyzers for Making Heat Release Measurements

This annex is not a part of the requirements of this NFPA document but is included for informational purposes only.

B.1 General. The paramagnetic type of oxygen analyzer is best suited for fire gas analysis. Electrochemical analyzers or analyzers using zirconia sensors have generally been found not to have adequate sensitivity or suitability for this type of work. The normal range of the instrument to be used is 0 to 25 percent volume oxygen. The linearity of paramagnetic analyzers is usually better than can be checked by a user laboratory, thus verifying that their linearity is not necessary. It is important, however, to confirm the noise and short-term drift of the instrument used.

B.2 Procedure. The analyzer suitability is checked by the following steps:

- (1) Connect two different gas bottles that are approximately 2 percentage points apart (for example, 15 percent volume and 17 percent volume) to a selector valve at the inlet of the analyzer.
- (2) Connect the electrical power and let the analyzer warm up for 24 hours, with one of the test gases from the bottles described in B.2(1) flowing through it.
- (3) Connect a data acquisition system to the output of the analyzer. Quickly switch from the first gas bottle to the second bottle and immediately start collecting data, taking one data point per second. Collect data for 20 minutes.
- (4) Determine the drift by using a least-squares analysis fitting procedure to pass a straight line through the last 19 minutes of data. Extrapolate the line back through the first minute of data. The difference between the readings at 0 minutes and at 20 minutes on the fitted straight line represents the short-term drift. Record the drift in units of parts per million of oxygen.
- (5) The noise is represented by the root-mean-square deviation around the fitted straight line. Calculate that root-mean-square value and record it in units of parts per million of oxygen.

The analyzer is suitable for use in heat release measurements if the sum of the drift plus the noise terms is 250 ppm oxygen. (Note that both terms have to be expressed as positive numbers.)

B.3 Additional Precautions. A paramagnetic oxygen analyzer is directly sensitive to barometric pressure changes at its outlet port and to flow rate fluctuations in the sample supply stream. It is essential that the flow rate be regulated. Use either a flow rate regulator of the mechanical diaphragm type or an electronic mass flow rate controller. To protect against errors due to changes in barometric pressure, one of the following procedures should be used:

- (1) Control the back pressure to the analyzer with a back pressure regulator of the absolute pressure type
- (2) Electrically measure the actual pressure at the detector element and provide a signal correction for the analyzer output

See ASTM E1354, *Standard Test Method for Heat and Visible Smoke Release Rates for Materials and Products Using an Oxygen Consumption Calorimeter*.

Annex C Informational References

C.1 Referenced Publications. The documents or portions thereof listed in this annex are referenced within the informational sections of this standard and are not part of the requirements of this document unless also listed in Chapter 2 for other reasons.

C.1.1 NFPA Publications. National Fire Protection Association, 1 Batterymarch Park, Quincy, MA 02169-7471.

NFPA 1, *Fire Code*, 2018 edition.

NFPA 101®, *Life Safety Code*®, 2018 edition.

NFPA 265, *Standard Methods of Fire Tests for Evaluating Room Fire Growth Contribution of Textile or Expanded Vinyl Wall Coverings on Full Height Panels and Walls*, 2019 edition.

NFPA 286, *Standard Methods of Fire Tests for Evaluating Contribution of Wall and Ceiling Interior Finish to Room Fire Growth*, 2019 edition.

NFPA 5000®, *Building Construction and Safety Code*®, 2018 edition.

C.1.2 Other Publications.

C.1.2.1 ASTM Publications. ASTM International, 100 Barr Harbor Drive, P.O. Box C700, West Conshohocken, PA 19428-2959.

ASTM E603, *Standard Guide for Room Fire Experiments*, 2013.

ASTM E800, *Standard Guide for Measurement of Gases Present or Generated During Fires*, 2014.

ASTM E1354, *Standard Test Method for Heat and Visible Smoke Release Rates for Materials and Products Using an Oxygen Consumption Calorimeter*, 2016a.

ASTM E1537, *Standard Test Method for Fire Testing of Upholstered Furniture*, 2016.

ASTM E1590, *Standard Test Method for Fire Testing of Mattresses*, 2017.

ASTM E1822, *Standard Test Method for Fire Testing of Stacked Chairs*, 2013.

ASTM E2067, *Standard Practice for Full-Scale Oxygen Consumption Calorimetry Tests* (Annual Book of ASTM Standards, Vol. 4.07), 2015.

ASTM E2257, *Standard Test Method for Room Fire Test of Wall and Ceiling Materials or Assemblies*, 2017.

C.1.2.2 ICC Publications. International Code Council, 500 New Jersey Avenue, NW, 6th Floor, Washington, DC 20001.

International Building Code (IBC), 2018.

International Fire Code (IFC), 2018.

C.1.2.3 ISO Publications. International Organization for Standardization, ISO Central Secretariat, BIBC II, Chemin de Blandonnet 8, CP 401, 1214 Vernier, Geneva, Switzerland.

ISO 9705, *Fire tests — Full-scale room fire tests for surface products*, 1993.

C.1.2.4 UL Publications. Underwriters Laboratories Inc., 333 Pfingsten Road, Northbrook, IL 60062-2096.

UL 1975, *Standard for Fire Tests for Foamed Plastics Used for Decorative Purposes*, 2006.

UL Subject 2358, *Outline of Investigation for Fire Tests of Pre-Lit Artificial Seasonal Use Trees and Other Seasonal Decorative Items*, 2013.

C.1.2.5 U.S. Government Publications. U.S. Government Publishing Office, 732 North Capitol Street, NW, Washington, DC 20401-0001.

Title 16, Code of Federal Regulations, Part 1633.

C.1.2.6 Other References.

California Technical Bulletin TB 133.

Chow, W. K., and K. F. Lai, “Optical Measurement of Smoke,” *Fire and Materials*, vol. 16, 135–139, 1992.

Coaker, A. W., M. M. Hirschler, and C. L. Shoemaker, “Rate of Heat Release Testing for Vinyl Wire and Cable Materials with Reduced Flammability and Smoke: Small Scale and Full Scale Tests,” in Proc. 15th. Int. Conference on Fire Safety, Product Safety Corporation, San Francisco, Ed., C. J. Hilado, January 8–12, pp. 220–256, 1990.

Janssens, M. L., “Measuring Rate of Heat Release by Oxygen Consumption,” *Fire Technology*, pp. 234–249, August 1991.

Janssens, M. L., and W. J. Parker, “Oxygen Consumption Calorimetry,” in *Heat Release in Fires*, Ed. V. Babrauskas and S. J. Grayson, Elsevier, London, Chapter 3, pp. 31–59, 1992.

McCaffrey, B. J., and G. Heskestad, “A Robust Bidirectional Low-Velocity Probe for Flame and Fire Application,” *Combustion and Flame*, vol. 26, no. 1, pp. 125–127, February 1976.

Ostman, B., “Comparison of Smoke Release from Building Products,” Int. Conf. FIRE. Control the Heat...Reduce the Hazard, London, Oct. 24–25, 1988, Fire Research Station, UK, paper 8.

Ower, E., and R. Pankhurst, *The Measurement of Air Flow*, Pergamon Press, 5th Edition, pp. 112–147, 1977.

C.2 Informational References. (Reserved)

C.3 References for Extracts in Informational Sections. (Reserved)

Index

Copyright © 2018 National Fire Protection Association. All Rights Reserved.

The copyright in this index is separate and distinct from the copyright in the document that it indexes. The licensing provisions set forth for the document are not applicable to this index. This index may not be reproduced in whole or in part by any means without the express written permission of NFPA.

- A-**
- Administration**, Chap. 1
 - Purpose, 1.2
 - Scope, 1.1
 - Symbols, 1.3
- Approved**
 - Definition, 3.2.1, A.3.2.1
- Authority Having Jurisdiction (AHJ)**
 - Definition, 3.2.2, A.3.2.2
- C-**
- Calculation Methods for Total Rate of Heat Release**, Chap. 10
 - Mass Flow Rate, 10.1, A.10.1
 - Release Rate of Combustion Gases, 10.3
 - Smoke Measurement Equations, 10.2
- Calibration**, Chap. 8
 - Calibration and Documentation of Ignition Source and Test Equipment, 8.1
 - Instruments, 8.1.1
 - Calibration Procedure, 8.2, A.8.2
 - Gas Analyzer Calibration, 8.4, A.8.4
 - Smoke Measurement Calibration, 8.3
- D-**
- Definitions**, Chap. 3
- E-**
- Environmental Conditions**, Chap. 6
 - Conditioning, 6.1, A.6.1
 - Fire Test Area Environment, 6.2
- Explanatory Material**, Annex A
- F-**
- Fuel Package**
 - Definition, 3.3.1
- H-**
- Heat of Combustion**
 - Definition, 3.3.3
 - Effective Heat of Combustion
 - Definition, 3.3.3.1
 - Net Heat of Combustion
 - Definition, 3.3.3.2
- Heat Release Rate**
 - Definition, 3.3.4
- Heating Flux**
 - Definition, 3.3.5, A.3.3.5
- I-**
- Individual Fuel Package**
 - Definition, 3.3.2
- Individual Fuel Packages**, Chap. 5
 - Artificial Vegetation, 5.4, A.5.4
 - Decorative Objects, 5.1
 - Exhibit Booths, 5.2
 - Natural Christmas Trees, 5.5
 - Conditioning, 5.5.6
 - Other Individual Fuel Packages, 5.6
 - Theater, Motion Picture, and Television Stage Settings, 5.3
- Informational References**, Annex C
- Initial Test Heat Flux**
 - Definition, 3.3.6, A.3.3.6
- L-**
- Listed**
 - Definition, 3.2.3, A.3.2.3
- M-**
- Method of Determining Suitability of Oxygen Analyzers for Making Heat Release Measurements**, Annex B
 - Additional Precautions, B.3
 - General, B.1
 - Procedure, B.2
- O-**
- Oxygen Consumption Principle**
 - Definition, 3.3.7
- R-**
- Referenced Publications**, Chap. 2
- Report**, Chap. 11
 - Discussion of Performance, 11.2
 - Report, 11.1
 - Description of Individual Fuel Packages, 11.1.1
 - Ignition Source, 11.1.2
 - Time History of Mass Lost by the Individual Fuel Package, 11.1.6
 - Time History of Smoke Obscuration, 11.1.5
 - Time History of the Fire Growth, 11.1.4
 - Time History of the Rate of Heat Release of the Fire, 11.1.3
- S-**
- Shall**
 - Definition, 3.2.4
- Should**
 - Definition, 3.2.5
- Smoke Obscuration**
 - Definition, 3.3.8

Standard

Definition, 3.2.6

Summary of Method, Chap. 4

General, 4.1

Alternate Ignition Sources, 4.1.8

-T-**Test Equipment and Instrumentation**, Chap. 7

Canopy Hood and Exhaust Duct, 7.3

Fire Test Documentation, 7.2, A.7.2

Photographic Equipment, 7.2.2, A.7.2.2

Photographic Documentation, 7.2.2.3

Video Recording, 7.2.2.2

Ignition Source, 7.1

Instrumentation in Exhaust Duct, 7.4

Carbon Dioxide Concentration, 7.4.5

Carbon Monoxide Concentration, 7.4.6

Exhaust Collection System, 7.4.1

Oxygen Concentration, 7.4.4

Sampling Line, 7.4.3, A.7.4.3

General, 7.4.3.1

Smoke Obscuration, 7.4.7

Velocity Measurement, 7.4.2, A.7.4.2

General, 7.4.2.1

Pressure Transducer, 7.4.2.2, A.7.4.2.2

Thermocouples, 7.4.2.3

Load Cell, 7.5

Test Procedure, Chap. 9

Procedure, 9.1

Sequence of Events for the Standards Development Process

Once the current edition is published, a Standard is opened for Public Input.

Step 1 – Input Stage

- Input accepted from the public or other committees for consideration to develop the First Draft
- Technical Committee holds First Draft Meeting to revise Standard (23 weeks); Technical Committee(s) with Correlating Committee (10 weeks)
- Technical Committee ballots on First Draft (12 weeks); Technical Committee(s) with Correlating Committee (11 weeks)
- Correlating Committee First Draft Meeting (9 weeks)
- Correlating Committee ballots on First Draft (5 weeks)
- First Draft Report posted on the document information page

Step 2 – Comment Stage

- Public Comments accepted on First Draft (10 weeks) following posting of First Draft Report
- If Standard does not receive Public Comments and the Technical Committee chooses not to hold a Second Draft meeting, the Standard becomes a Consent Standard and is sent directly to the Standards Council for issuance (see Step 4) or
- Technical Committee holds Second Draft Meeting (21 weeks); Technical Committee(s) with Correlating Committee (7 weeks)
- Technical Committee ballots on Second Draft (11 weeks); Technical Committee(s) with Correlating Committee (10 weeks)
- Correlating Committee Second Draft Meeting (9 weeks)
- Correlating Committee ballots on Second Draft (8 weeks)
- Second Draft Report posted on the document information page

Step 3 – NFPA Technical Meeting

- Notice of Intent to Make a Motion (NITMAM) accepted (5 weeks) following the posting of Second Draft Report
- NITMAMs are reviewed and valid motions are certified by the Motions Committee for presentation at the NFPA Technical Meeting
- NFPA membership meets each June at the NFPA Technical Meeting to act on Standards with “Certified Amending Motions” (certified NITMAMs)
- Committee(s) vote on any successful amendments to the Technical Committee Reports made by the NFPA membership at the NFPA Technical Meeting

Step 4 – Council Appeals and Issuance of Standard

- Notification of intent to file an appeal to the Standards Council on Technical Meeting action must be filed within 20 days of the NFPA Technical Meeting
- Standards Council decides, based on all evidence, whether to issue the standard or to take other action

Notes:

1. Time periods are approximate; refer to published schedules for actual dates.
2. Annual revision cycle documents with certified amending motions take approximately 101 weeks to complete.
3. Fall revision cycle documents receiving certified amending motions take approximately 141 weeks to complete.

Committee Membership Classifications^{1,2,3,4}

The following classifications apply to Committee members and represent their principal interest in the activity of the Committee.

1. M *Manufacturer*: A representative of a maker or marketer of a product, assembly, or system, or portion thereof, that is affected by the standard.
2. U *User*: A representative of an entity that is subject to the provisions of the standard or that voluntarily uses the standard.
3. IM *Installer/Maintainer*: A representative of an entity that is in the business of installing or maintaining a product, assembly, or system affected by the standard.
4. L *Labor*: A labor representative or employee concerned with safety in the workplace.
5. RT *Applied Research/Testing Laboratory*: A representative of an independent testing laboratory or independent applied research organization that promulgates and/or enforces standards.
6. E *Enforcing Authority*: A representative of an agency or an organization that promulgates and/or enforces standards.
7. I *Insurance*: A representative of an insurance company, broker, agent, bureau, or inspection agency.
8. C *Consumer*: A person who is or represents the ultimate purchaser of a product, system, or service affected by the standard, but who is not included in (2).
9. SE *Special Expert*: A person not representing (1) through (8) and who has special expertise in the scope of the standard or portion thereof.

NOTE 1: “Standard” connotes code, standard, recommended practice, or guide.

NOTE 2: A representative includes an employee.

NOTE 3: While these classifications will be used by the Standards Council to achieve a balance for Technical Committees, the Standards Council may determine that new classifications of member or unique interests need representation in order to foster the best possible Committee deliberations on any project. In this connection, the Standards Council may make such appointments as it deems appropriate in the public interest, such as the classification of “Utilities” in the National Electrical Code Committee.

NOTE 4: Representatives of subsidiaries of any group are generally considered to have the same classification as the parent organization.

Submitting Public Input / Public Comment Through the Online Submission System

Soon after the current edition is published, a Standard is open for Public Input.

Before accessing the Online Submission System, you must first sign in at www.nfpa.org. *Note: You will be asked to sign-in or create a free online account with NFPA before using this system:*

- a. Click on Sign In at the upper right side of the page.
- b. Under the Codes and Standards heading, click on the “List of NFPA Codes & Standards,” and then select your document from the list or use one of the search features.

OR

- a. Go directly to your specific document information page by typing the convenient shortcut link of www.nfpa.org/document# (Example: NFPA 921 would be www.nfpa.org/921). Sign in at the upper right side of the page.

To begin your Public Input, select the link “The next edition of this standard is now open for Public Input” located on the About tab, Current & Prior Editions tab, and the Next Edition tab. Alternatively, the Next Edition tab includes a link to Submit Public Input online.

At this point, the NFPA Standards Development Site will open showing details for the document you have selected. This “Document Home” page site includes an explanatory introduction, information on the current document phase and closing date, a left-hand navigation panel that includes useful links, a document Table of Contents, and icons at the top you can click for Help when using the site. The Help icons and navigation panel will be visible except when you are actually in the process of creating a Public Input.

Once the First Draft Report becomes available there is a Public Comment period during which anyone may submit a Public Comment on the First Draft. Any objections or further related changes to the content of the First Draft must be submitted at the Comment stage.

To submit a Public Comment you may access the online submission system utilizing the same steps as previously explained for the submission of Public Input.

For further information on submitting public input and public comments, go to: <http://www.nfpa.org/publicinput>.

Other Resources Available on the Document Information Pages

About tab: View general document and subject-related information.

Current & Prior Editions tab: Research current and previous edition information on a Standard.

Next Edition tab: Follow the committee’s progress in the processing of a Standard in its next revision cycle.

Technical Committee tab: View current committee member rosters or apply to a committee.

Technical Questions tab: For members and Public Sector Officials/AHJs to submit questions about codes and standards to NFPA staff. Our Technical Questions Service provides a convenient way to receive timely and consistent technical assistance when you need to know more about NFPA codes and standards relevant to your work. Responses are provided by NFPA staff on an informal basis.

Products & Training tab: List of NFPA’s publications and training available for purchase.

Information on the NFPA Standards Development Process

I. Applicable Regulations. The primary rules governing the processing of NFPA standards (codes, standards, recommended practices, and guides) are the NFPA *Regulations Governing the Development of NFPA Standards (Regs)*. Other applicable rules include NFPA *Bylaws*, NFPA *Technical Meeting Convention Rules*, NFPA *Guide for the Conduct of Participants in the NFPA Standards Development Process*, and the NFPA *Regulations Governing Petitions to the Board of Directors from Decisions of the Standards Council*. Most of these rules and regulations are contained in the *NFPA Standards Directory*. For copies of the *Directory*, contact Codes and Standards Administration at NFPA Headquarters; all these documents are also available on the NFPA website at “www.nfpa.org.”

The following is general information on the NFPA process. All participants, however, should refer to the actual rules and regulations for a full understanding of this process and for the criteria that govern participation.

II. Technical Committee Report. The Technical Committee Report is defined as “the Report of the responsible Committee(s), in accordance with the Regulations, in preparation of a new or revised NFPA Standard.” The Technical Committee Report is in two parts and consists of the First Draft Report and the Second Draft Report. (See *Regs* at Section 1.4.)

III. Step 1: First Draft Report. The First Draft Report is defined as “Part one of the Technical Committee Report, which documents the Input Stage.” The First Draft Report consists of the First Draft, Public Input, Committee Input, Committee and Correlating Committee Statements, Correlating Notes, and Ballot Statements. (See *Regs* at 4.2.5.2 and Section 4.3.) Any objection to an action in the First Draft Report must be raised through the filing of an appropriate comment for consideration in the Second Draft Report or the objection will be considered resolved. [See *Regs* at 4.3.1(b).]

IV. Step 2: Second Draft Report. The Second Draft Report is defined as “Part two of the Technical Committee Report, which documents the Comment Stage.” The Second Draft Report consists of the Second Draft, Public Comments with corresponding Committee Actions and Committee Statements, Correlating Notes and their respective Committee Statements, Committee Comments, Correlating Revisions, and Ballot Statements. (See *Regs* at 4.2.5.2 and Section 4.4.) The First Draft Report and the Second Draft Report together constitute the Technical Committee Report. Any outstanding objection following the Second Draft Report must be raised through an appropriate Amending Motion at the NFPA Technical Meeting or the objection will be considered resolved. [See *Regs* at 4.4.1(b).]

V. Step 3a: Action at NFPA Technical Meeting. Following the publication of the Second Draft Report, there is a period during which those wishing to make proper Amending Motions on the Technical Committee Reports must signal their intention by submitting a Notice of Intent to Make a Motion (NITMAM). (See *Regs* at 4.5.2.) Standards that receive notice of proper Amending Motions (Certified Amending Motions) will be presented for action at the annual June NFPA Technical Meeting. At the meeting, the NFPA membership can consider and act on these Certified Amending Motions as well as Follow-up Amending Motions, that is, motions that become necessary as a result of a previous successful Amending Motion. (See 4.5.3.2 through 4.5.3.6 and Table 1, Columns 1-3 of *Regs* for a summary of the available Amending Motions and who may make them.) Any outstanding objection following action at an NFPA Technical Meeting (and any further Technical Committee consideration following successful Amending Motions, see *Regs* at 4.5.3.7 through 4.6.5.3) must be raised through an appeal to the Standards Council or it will be considered to be resolved.

VI. Step 3b: Documents Forwarded Directly to the Council. Where no NITMAM is received and certified in accordance with the Technical Meeting Convention Rules, the standard is forwarded directly to the Standards Council for action on issuance. Objections are deemed to be resolved for these documents. (See *Regs* at 4.5.2.5.)

VII. Step 4a: Council Appeals. Anyone can appeal to the Standards Council concerning procedural or substantive matters related to the development, content, or issuance of any document of the NFPA or on matters within the purview of the authority of the Council, as established by the Bylaws and as determined by the Board of Directors. Such appeals must be in written form and filed with the Secretary of the Standards Council (see *Regs* at Section 1.6). Time constraints for filing an appeal must be in accordance with 1.6.2 of the *Regs*. Objections are deemed to be resolved if not pursued at this level.

VIII. Step 4b: Document Issuance. The Standards Council is the issuer of all documents (see Article 8 of *Bylaws*). The Council acts on the issuance of a document presented for action at an NFPA Technical Meeting within 75 days from the date of the recommendation from the NFPA Technical Meeting, unless this period is extended by the Council (see *Regs* at 4.7.2). For documents forwarded directly to the Standards Council, the Council acts on the issuance of the document at its next scheduled meeting, or at such other meeting as the Council may determine (see *Regs* at 4.5.2.5 and 4.7.4).

IX. Petitions to the Board of Directors. The Standards Council has been delegated the responsibility for the administration of the codes and standards development process and the issuance of documents. However, where extraordinary circumstances requiring the intervention of the Board of Directors exist, the Board of Directors may take any action necessary to fulfill its obligations to preserve the integrity of the codes and standards development process and to protect the interests of the NFPA. The rules for petitioning the Board of Directors can be found in the *Regulations Governing Petitions to the Board of Directors from Decisions of the Standards Council* and in Section 1.7 of the *Regs*.

X. For More Information. The program for the NFPA Technical Meeting (as well as the NFPA website as information becomes available) should be consulted for the date on which each report scheduled for consideration at the meeting will be presented. To view the First Draft Report and Second Draft Report as well as information on NFPA rules and for up-to-date information on schedules and deadlines for processing NFPA documents, check the NFPA website (www.nfpa.org/docinfo) or contact NFPA Codes & Standards Administration at (617) 984-7246.



XchangeTM

The place to connect online with your fire, electrical, and life safety peers

Have a question about the code or standard you're reading now?

NFPA XchangeTM can help!

NFPA XchangeTM brings together over 30,000 professionals worldwide, asking and answering each other's questions, sharing ideas, and discussing the issues impacting your industry today.

NFPA XchangeTM is free to join and offers:

- ➔ A robust collection of previously asked and answered questions to search
- ➔ Access to thousands of peers for problem-solving and on-the-job advice
- ➔ NFPA blogs, white papers, and webinars in one convenient place

NFPA members also enjoy **XchangeTM Members Only**, the online space for technical questions* answered by NFPA staff, exclusive NFPA live events, and premier access to curated content.

Join NFPA XchangeTM TODAY!

www.nfpa.org/xchange

Xchange Today. Safer Tomorrow.

*For the full terms of use, please visit nfpa.org/standard_items/terms-of-use#xchange. NFPA® is a registered trademark of the National Fire Protection Association, Quincy, MA 02169.